

ATTENTION!

PROTECT YOURSELF AND OTHERS BY

Practicing Social Distancing to help prevent the spread of colds, flu and the Coronavirus (**COVID-19**).

ALL CITY OF COMMERCE FACILITIES ARE



CLOSED

TO THE PUBLIC



WEAR A MASK



ALL EMPLOYEES AND APPROVED VISITORS SHOULD:

- Avoid entering the facility if you have a cough or fever
 - *Should you have a cough or fever, do not enter the facility and contact your supervisor immediately to inform them.

MAINTAIN DISTANCE



- Wear a Face Covering (cloth or other material) prior to entering the facility;
- Maintain a minimum **Six-Foot (6 ft.)** distance from one another;

WASH YOUR HANDS



- Keep hands clean by washing them frequently;
- Use disinfectant wipes when touching equipment or surfaces that others may use
- Do not shake hands or engage in any unnecessary physical contact;

CONTACT YOUR SUPERVISORS OR HR STAFF WITH ANY QUESTIONS.



Welcome back to the library. We are taking many steps to create the safest possible environment for our library patrons and staff. Please help us protect you and library staff by following these guidelines:



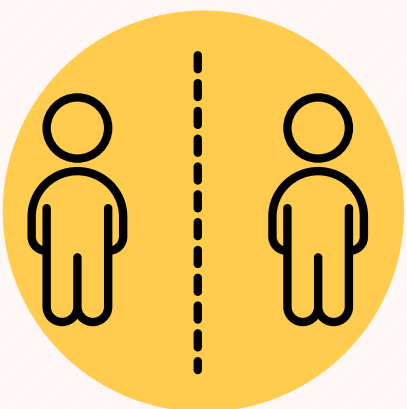
Feeling Ill

To prevent the spread of Covid-19, please do not visit the library if you are ill, have fever, cough or have difficulty breathing.



Face Covering

Everyone is required to wear a mask covering your mouth and nose at all times.



Social Distance

Everyone is required to maintain 6 feet apart.

Non-compliance of these guidelines is considered a violation of the Library Rules of Conduct and also a violation of the Order of the LA County Health Officer for Reopening Protocol for In-Person Services in Libraries and patrons are subject to removal of library premises.



Bienvenidos de nuevo a la biblioteca. Estamos tomando muchas medidas para crear el espacio más seguro posible para los usuarios y el personal de nuestra biblioteca. Ayúdenos a protegerlo a usted y al personal de la biblioteca siguiendo estas pautas:



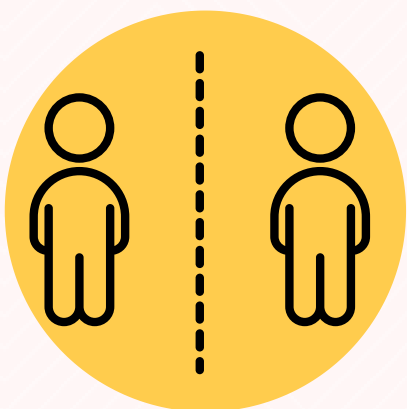
Si se siente enfermo

Para prevenir la propagación de Covid-19, no visite la biblioteca si está enfermo, tiene fiebre, tos o tiene dificultad para respirar.



Cubertura facial

Todos deben usar una máscara que cubra su boca y nariz en todo momento.



Distancia social

Todos deben mantener una distancia de 6 pies.

El incumplimiento de estas pautas se considera una violación de las Reglas de Conducta de la Biblioteca y también una violación de la Orden de Salud del Condado de Los Ángeles. Oficial de Protocolo de Reapertura para Servicios en Persona en Bibliotecas y los usuarios están sujetos a la remoción de las instalaciones de la biblioteca.

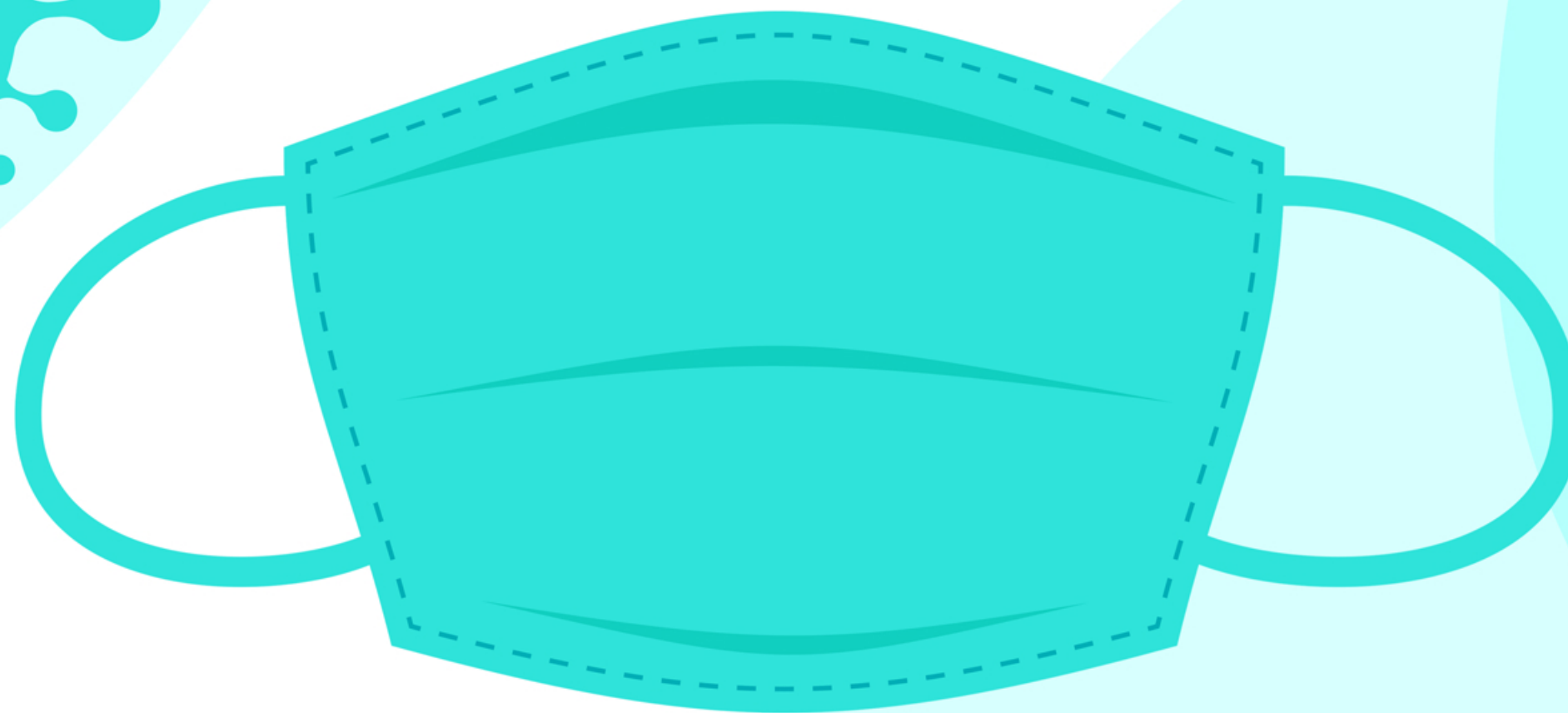


**Ride Free,
Ride Safe**

What is CC Transit doing to help stop the spread of COVID-19?

- 1. Our team cleans and disinfects the buses each morning before route departure**
- 2. We use safe electrostatic cleaning with EPA approved disinfectants throughout the bus**
- 3. Installed safety barriers for the safety of bus operators and passengers**
- 4. Installed hand sanitizer dispensers on board the bus for passengers**
- 5. Installed MERV-8 air filters with anti microbial fiber layers in all buses**
- 6. Rear door boarding on all buses**
- 7. We keep customers up to date on the latest changes through the CC Transit app, City website, and in-bus advertisements**

**WEAR A MASK.
SAVE A LIFE.**



**USA UNA MÁSCARA.
SALVA UNA VIDA.**





Feeling Sick?

Stay home when you are sick!

If you feel unwell or have the following symptoms
please leave the building and contact your health care provider.
Then follow-up with your supervisor.

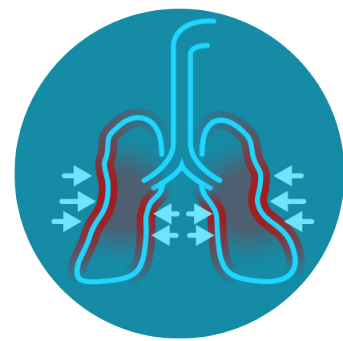
DO NOT ENTER if you have:



FEVER



COUGH



**SHORTNESS OF
BREATH**



cdc.gov/CORONAVIRUS

American Public Transportation Association's Safety & Health Commitments Program

 apta.com/commitments

The American Public Transportation Association's **Safety & Health Commitments Program** was established to protect riders and employees so that public transportation can continue to deliver safe, valuable services to everyone. The program centers on shared commitments during the COVID-19 crisis – your transit agency doing their part and transit users doing theirs. The Seal of Commitment you see displayed on transit vehicles, in stations, and at bus stops means your agency has pledged to institute policies and practices in four major areas:

- Following Official Guidance
- Protecting Each Other through smart practices and behaviors
- Making Informed Choices based on timely information
- Putting Health First

Transit agency commitments – and yours – can be found on our website, posters, and signs. You're counting on transit and we're counting on you. Because **We're All in This Together**.

The **American Public Transportation Association** is the only independent, non-profit organization that represents all modes of public transportation in North America, as well as the businesses and research institutions that support transit. With roots that date back to 1884, APTA is involved in every aspect of public transit – from the planning, design, and construction of transit systems, facilities, and vehicles to setting industry standards for safe and reliable operations and maintenance.

Public transportation does more than move people. It promotes economic growth, a clean environment, and social equity. It connects all of us to what we need ... what we love ... and what we aspire to achieve. It's the backbone of mobility on which freedom and progress are built.



Our Commitments To Health & Safety

Our system has joined public transit agencies across the country in committing to making every ride safer — and we need your help.

WE'RE DOING OUR PART

YOU'RE DOING YOURS

**Creating
science-based
policies**



**Following all
health & safety
rules**

**Cleaning &
disinfecting
more frequently**



**Wearing
face coverings &
washing hands**

**Sharing
information
about safe rides**



**Respecting fellow
riders' space**

**Keeping
our employees
healthy**



**Staying home
if you're sick**

To learn more about APTA's Health and Safety Commitments Program, visit apta.com/commitments