



1180-A California Avenue
Corona, CA 92881
Tel: 1-800-959-1844 Fax: 1-800-986-6275
Visit us at www.bsnsports.com

Contact Your Rep

Jim Duff Email:jduff@bsnsports.com | Phone:1-800-959-1844

Sold to
4628290
Veterans Park
6364 Zindell ave
COMMERCE CA 90040
USA

Ship To
4628290
Veterans Park
6364 Zindell ave
COMMERCE CA 90040
USA

Quote

Quote #: 21061259
Purchase Order #:
Cart Name:
Quote Date: 12/14/2018
Quote Valid-to: 01/30/2019
Payment Terms: NT30
Ship Via:
Ordered By: Chidi Ugwueze

Payer
1661983
City of Commerce
2535 COMMERCE WAY
COMMERCE CA 90040-1410
USA

Item Description	Qty	Unit Price	Total
installation non tax Item # - SERVICE_NOTAX	1 EA	\$ 18,575.00	\$ 18,575.00
90955000 side fold basket North Main ct Item # - NSPHG	1 EA	\$ 5,850.00	\$ 5,850.00
90955000 side fold basket South Main ct Item # - NSPHG	1 EA	\$ 5,850.00	\$ 5,850.00
90219000 up fold basket side courts Item # - NSPHG	4 EA	\$ 5,100.00	\$ 20,400.00

Subtotal:	\$50,675.00
Other:	\$0.00
Freight:	\$1,177.00
Sales Tax:	\$3,210.00
Order Total:	\$55,062.00
Payment/Credit Applied:	\$0.00
Order Total:	\$55,062.00

Chidi Ugwueze 323 722 4805 x 2231 cell 323 540 2114

CUgwueze@ci.commerce.ca.us.

Bsn to Install 2 ea ceiling hung side fold basketball baskets and 4 ea
side court wall mount fold up baskets
to have official 42" x 72" glass backboards, backboard padding,
breakaway rims and electric height adjustors, electric winches and s
afety straps.

Height adjustors and winches to be controlled by a key switch.

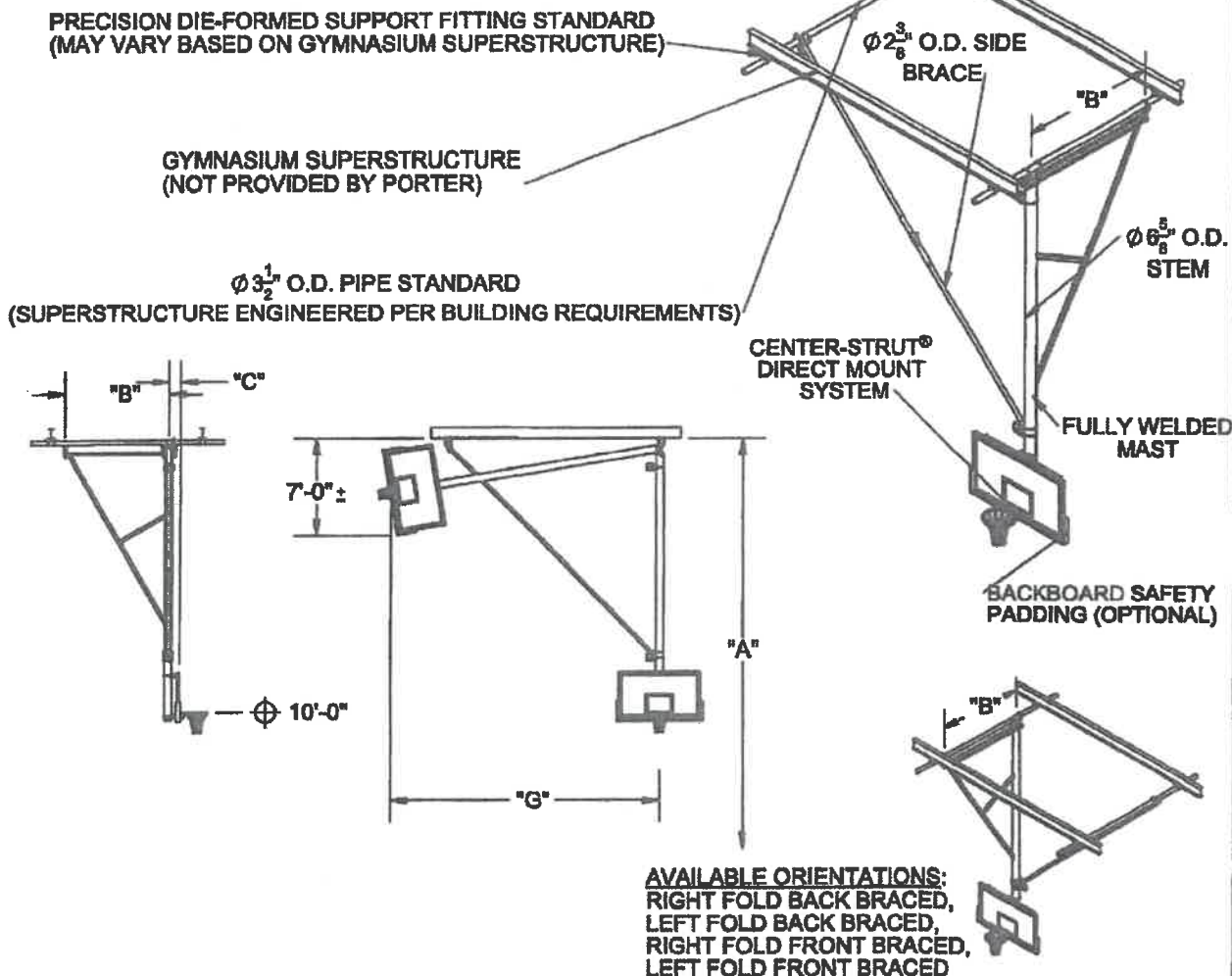
Exceptions: all electrical to winches and key switches to winches and
height adjustors to be done by others..

Note: option to supply carpet on plywood on the gym floor during
installation add \$5400.00 to labor price

VETERANS PARK MAIN COURT

90955000 - SIDE FOLD BACKSTOP

CEILING SUSPENDED, SIDE FOLD, SIDE BRACED UNIT
28' TO 32' ATTACHMENT HEIGHT



"A" BOTTOM OF STRUCTURE ABOVE FINISHED FLOOR	"B" MAST CENTERS	"C" FACE OF BACKBOARD TO Q MAST	"D" SIDE BRACE DIMENSION (WITHIN 6" ±)	"E" HORIZONTAL FOLD DIMENSION
28' 0-1/8" to 29'-0"	8'-0"	SEE	13'-0"	20'-3"
29' 0-1/8" to 30'-0"	8'-0"	"C"	14'-9"	21'-3"
30' 0-1/8" to 31'-0"	8'-0"	DIMENSION	15'-9"	22'-3"
31' 0-1/8" to 32'-0"	8'-0"	CHART	16'-6"	23'-3"

"C" DIMENSION CHART- FACE OF BACKBOARD TO CENTERLINE OF MAST			
BACKBOARD MODEL NUMBER	DESCRIPTION	WITHOUT HEIGHT ADJUSTER	WITH HEIGHT ADJUSTER
208	RECTANGULAR GLASS	10-1/8"	12-11/16"
216	RECTANGULAR FIBERGLASS	9-7/8"	12-7/16"
234A	FAN ALUMINUM	9-5/16"	11-7/8"
267A	FAN FIBERGLASS	9-1/4"	11-13/16"

90955000 CEILING SUSPENDED, SIDE FOLD, SIDE BRACED UNIT

- BACKBOARD SELECTION

- GOAL SELECTION

- PADDING SELECTION

porter

888-277-7778 PORTER@PORTERATHLETIC.COM

© COPYRIGHT 2015 PORTER ATHLETIC - ALL RIGHTS RESERVED

PROJECT NUMBER

PROJECT NAME

WWW.PORTERATHLETIC.COM/FACILITY

BASKETBALL SPECIFICATION SHEET

B-955-32

10/1/201:

90955000 - SIDE FOLD BACKSTOP

CEILING SUSPENDED, SIDE FOLD, SIDE BRACED UNIT
28' TO 32' ATTACHMENT HEIGHTSPECIFICATIONS

Basketball backstop shall consist of a main center mast of 6-5/8" O.D. heavy-wall structural steel tube with diagonal side sway braces of 2-1/2" x 1-1/2" rectangular steel tubing. Ends of diagonal brace tubes shall be fully welded to main mast. Top horizontal mast member to be of a heavy 5" structural channel to support adjustable suspension hangers. Mast shall be fully welded and suspended by adjustable hangers (3) to provide for precise plumbing of frame during installation. Support hangers shall be offset a minimum of 1" behind centerline of welded mast to properly weight lock unit in playing position.

Goal shall mount directly through backboard and into a heavy structural steel Center-Strut® weldment which shall be clamped to the vertical 6-5/8" O.D. center support to eliminate any strain on backboard should a player hang on the front mounted goal (conforms to the NCAA latest rules). All fittings shall be attached to the 6-5/8" O.D. vertical drop tube by heavy 1/4" thick precision saddle die-cut formed steel fittings secured in place by 5/8" diameter 'U'-Bolt type hardware.

Backstop to operate with a 2-3/8" O.D. side brace assembly with a folding knee joint. Knee joint to incorporate an internal torsion spring design to lock brace assembly firmly in playing position. Hoist cable shall automatically disengage brace knee joint during the hoist cycle.

Backstop shall be supported from pipe anchored to roof framing members by precision die formed support fittings or custom attachments as required. All cap screws shall be rated a minimum SAE Grade 5. Grade 2 cap screws will not be approved as equal.

All metal parts shall be powder coated. See swatch card SMPL00048024 for standard color options. (contact Porter for custom color requests)

Backstop provided with specified backboard and goal (see B-200 for options).

See winch specifications for more information on included Porter winch system and control options. (B-701)

WARRANTY

- No. 900 Center-Strut® series backstop structure comes with a 25 year limited warranty.
- Limited Lifetime warranty on all Porter backboards when used in conjunction with the No. 900 Center-Strut® series backstop.
- Other components may be covered by their own warranty (see corresponding specifications for more details).

OPTIONAL ITEMS (SEE SPECIFICATION SHEETS FOR DETAIL)

- Backboard safety padding (see B-200)
- Height Adjuster (8' to 10' adjustable goal height) (see chart below)
- Saf-Strap (No. 10797100)
- Retractor Reel (No. 10799100, 10799110); with Saf-Strap (No. 10799200, 10799210)

CENTER-STRUT® HEIGHT ADJUSTER

- | | | |
|---|--------------------------------|------------------------|
| • For Manual Operation, See Page No.: | B-900-506 (Rectangular Boards) | B-900-211 (Fan Boards) |
| • For Key Switch Operation, See Page No.: | B-901-506 (Rectangular Boards) | B-901-211 (Fan Boards) |
| • For Powr-Stick Operation, See Page No.: | B-902-506 (Rectangular Boards) | B-902-211 (Fan Boards) |
| • For Sportsonic® II Operation, See Page No.: | B-903-506 (Rectangular Boards) | B-903-211 (Fan Boards) |
| • For Powr-Touch Operation, See Page No.: | B-904-506 (Rectangular Boards) | B-904-211 (Fan Boards) |

LEED® SUBMITTAL INFORMATION

Credit	Measure
MRc4-Recycled Content	Post Consumer Average 25.0% Post Industrial 0%
MRc5-Regional Materials	Raw materials originate from multiple sources so origin point cannot be determined. Final Manufacturing/Assembly in Champaign, IL 61822

219 - FOLDING DIMENSIONS

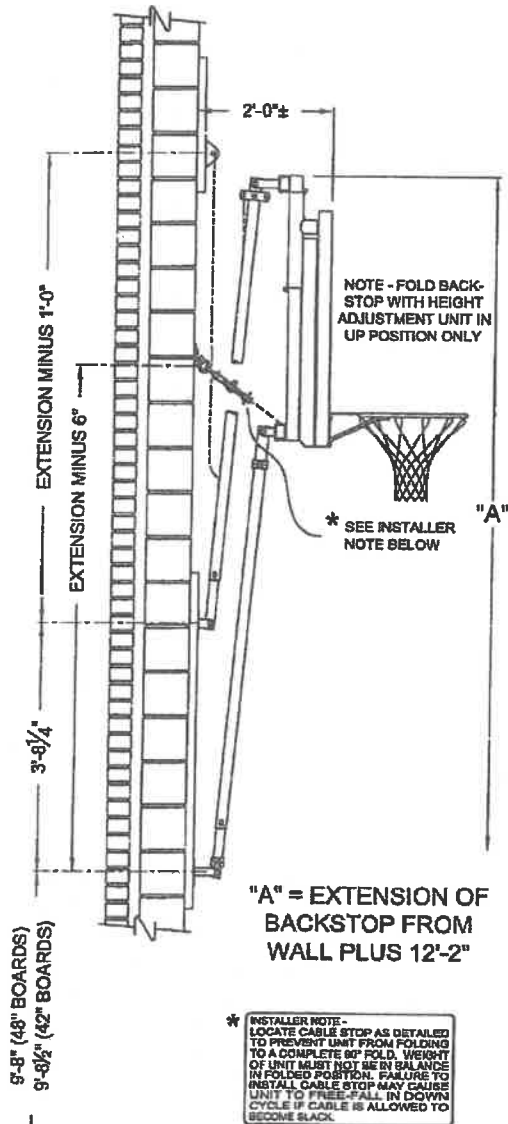
No. 219 WALL-MOUNTED UP-FOLD BACKSTOPS WITH HEIGHT ADJUSTER

Porter
WWW.PORTERATHLETIC.COM/FACILITY

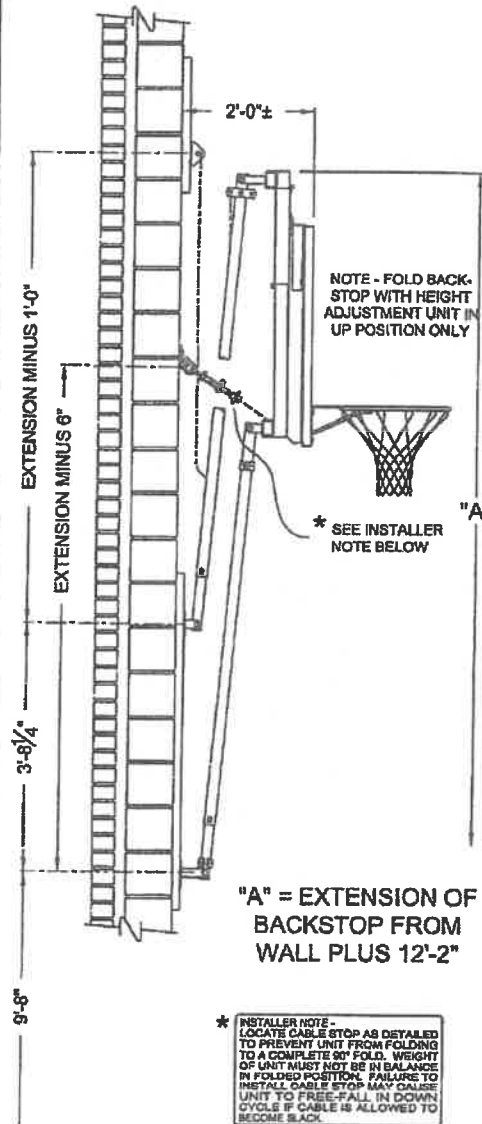
FOLDING DIMENSION SPECIFICATION SHEET

W-219-2

WALL-MOUNTED BACKSTOP WITH RECTANGULAR BACKBOARD



WALL-MOUNTED BACKSTOP WITH FAN BACKBOARD



Porter
888-277-7778 PORTER@PORTERATHLETIC.COM
© COPYRIGHT 2015 PORTER ATHLETIC - ALL RIGHTS RESERVED

PROJECT NUMBER

PROJECT NAME

10/1/2015

00219-000 - UP FOLD BACKSTOP

WALL-MOUNTED UP-FOLD BACKSTOP WITH CENTER-STRUT®
HEIGHT ADJUSTER RECT. BACKBOARD - 4'-0" to 10'-0" EXTENSION

SPECIFICATIONS

PORTER No. 00219- WALL-MOUNTED FOLD-UP BACKSTOP
WITH CENTER-STRUT®HEIGHT ADJUSTMENT UNIT
FOR RECTANGULAR BACKBOARD

Backstop shall be wall-mounted fold-up type with face of backboard extended 4'-0" to 10'-0" from supporting wall. Specify extension.

Extension frames shall be fabricated of four (4) 1-7/8" O.D. tubes with a telescoping end section for ease of installation, and precise plumbing and alignment of backboard with official court markings, even when supported on uneven wall conditions. Ends of extension frame assemblies shall be drilled and bolted to fabricated steel hinge plates for attachment to the backside of the backboard and to the wall pads. Hinge plates shall be offset-type to allow backstop to be folded in an almost vertical storage position against the wall.

Backstop shall be horizontally braced with two (2) 3/16" x 1-1/4" steel tension flats attached at both ends with precision die-formed clamps and joined at their intersection with a bolted steel fitting. Two (2) chain supports (3/16" proof coil chain) shall extend diagonally from the wall to the upper extension tubes, terminating in clamp-type fittings.

Southern yellow pine wall pads shall be provided at wall attachment points at extension frames and chain supports. All edges shall be chamfered and pads shall be finished with two finish coats of natural gloss lacquer.

Winch shall be worm gear type, designed to hold unit at any position when raising or lowering backstop. Handle shall be removable and shall provide sufficient leverage to facilitate easy raising of the backstop. Winch drum and gears shall be fully enclosed with a plated steel cover. Hoisting cable shall be 1/4" diameter galvanized aircraft cable, operating through 4" diameter pulleys enroute to the winch.

Height adjustment unit shall be designed to provide an adjustable, direct mount Center-Strut® goal attachment system to eliminate any strain on the backboard, should a player hang on the front mounted goal. Height adjustment units without the prescribed direct mount goal feature will not be approved as equal. Height adjustment feature will allow goal height settings from 8'-0" to the official 10'-0" for use by all age groups. Unit shall be designed for use with any official size (4' x 6' or 3'-6" x 6') Porter rectangular backboard and companion front-mount type goal.

Center unitized support frame of height adjustment unit shall be fabricated by dual, 2-3/16" square heavy wall zinc plated guide tubes located on 11-3/16" centers. Ends of guide tubes shall be welded to heavy mounting brackets. Outer dual slide tubes shall support heavy structural steel angle sections which extend downward to accept a direct mount Center-Strut goal mounting system. Slide tube assembly shall be provided with a heavy, formed steel section to attach a horizontal backboard support assembly to secure the unit to the upper two corners of the rectangular backboard on standard (5'-6") mounting centers.

Height adjustment unit shall incorporate a centrally located 3/4" diameter Acme threaded rod equipped with precision, hardened steel roller thrust bearings for ease of operation from the playing floor by means of an awning crank-type mechanism. Height adjustment system shall incorporate an internal, spring-loaded height locking mechanism to automatically lock and hold unit at any desired goal height during play. Lock mechanism automatically releases when height setting changes are made with adjustment crank assembly. Adjustment crank assembly shall be provided with each pair of height adjustment units. A height setting scale shall be located on the side of the unit to visually determine height settings from 8'-0" to 10'-0" in 3" increments.

Limited Lifetime warranty on Porter rectangular backboards when used in conjunction with Porter Center-Strut® height adjustment unit installed on a Porter No. 219 Wall-Mounted Backstop.

All metal parts shall be painted one (1) coat of flat black enamel. (If special painting of colors is required, specify final painting by painting contractor.)

Specify backboard and goal as required.

OPTIONAL ITEMS TO SPECIFY

See Page No. W-219-797H for specifications on Porter No. 10797-111 Saf-Strap Adapter Kit.

ISSUED OCTOBER 1, 2015, SUBJECT TO CURRENT MANUFACTURING PROCEDURES AND CHANGES
COPYRIGHT 2015 - PORTER ATHLETIC - ALL RIGHTS RESERVED
PORTER@PORTERATHLETIC.COM

PORTER
WWW.PORTERATHLETIC.COM/FACILITY

BASKETBALL SPECIFICATION SHEET

W-219-R10H

10/1/2015