

Submitted To

CITY OF COMMERCE
ATTN: Office of the City Clerk
2535 Commerce Way
Commerce, CA 90040



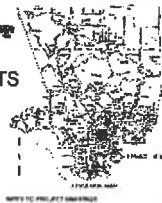
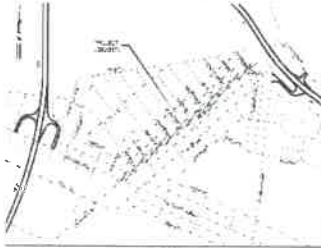
COPY

Due Date: December 10, 2018, 5 pm
Submittal includes: 1 original, 3 copies, 1 pdf file

TECHNICAL PROPOSAL CONSTRUCTION MANAGEMENT AND INSPECTION SERVICES FOR THE ATLANTIC BOULEVARD CORRIDOR IMPROVEMENT PROJECT

(As required, Fee Proposal is submitted in a separate envelope)

CITY OF COMMERCE COMMUNITY DEVELOPMENT DEPARTMENT PUBLIC WORKS DIVISION ATLANTIC BOULEVARD CORRIDOR IMPROVEMENTS



Submitted By



TRANSTECH

13367 Benson Avenue
Chino CA 91710
www.transtech.org
855.595.2495 (toll-free)

TRANSTECH ENGINEERS, INC.
Contact Person for this Proposal:

Ali Cayir, PE, Principal
Ali.cayir@transtech.org;
C: 714-883-8677 / O: 909-595-8599

SECTION	PAGE
As required, <u>Technical Proposal is limited to maximum 40 pages</u> (excluding proposal front and back covers, table of contents and section dividers), and shall be submitted in the format specified in City's RFP.	
1. COVER LETTER	1.1 – 1.3
2. PROJECT SPECIFIC APPROACH, SCOPE OF WORK	2.1 – 2.12
3. PROPOSED PROJECT SPECIFIC STAFF	3.1 – 3.22
4. SIMILAR PROJECTS AND REFERENCES	4.1 – 4.3
<u>Total Pages</u>	<u>40</u>

APPENDIX - CONTRACT



1. COVER LETTER

December 10, 2018

CITY OF COMMERCE

ATTN: Office of the City Clerk
2535 Commerce Way
Commerce, CA 90040



www.transtech.org
855.595.2495 (toll-free)

13367 Benson Avenue
Chino, CA 91710
T 909 595-8599
F 909 590-8599

**Subject: TECHNICAL PROPOSAL
CONSTRUCTION MANAGEMENT AND INSPECTION SERVICES
FOR THE ATLANTIC BOULEVARD CORRIDOR IMPROVEMENT PROJECT**
(As required, Fee Proposal is submitted in a separate envelope)

Transtech Engineers, Inc. is pleased to submit this Technical Proposal to the City for the subject project.

This cover letter provides an executive summary of our proposal.

ABOUT TRANSTECH:

Established in 1989, Transtech Engineers, Inc. (a California Corporation) is a multi-disciplinary engineering consulting firm, which provides engineering services to approximately 25 local agencies in Greater LA Area. Our staff and resources include approximately 100 engineers, project managers, designers, plan checkers, inspectors, construction managers, traffic and transportation analysts, technicians, admin support personnel and contract staff.

SERVICE CAPABILITIES:

Transtech's service capabilities include:

- Building and Safety Services, Building Inspection, Plan Check, Building Evaluations, City Building Official, Code Enforcement
- City Engineer, City Traffic Engineer, Development Review, Public Works Engineering, Plan Check, Inspection
- Staff Augmentation
- CIP Program Management
- Construction Management and Inspection
- Federally Funded Project Management
- Grant Writing
- CDBG Project Management
- Labor Compliance
- Civil Engineering, Freeways and Interchanges, Local Streets and Roads, Sewerage, Water and Storm Drain, Pavement Management System, Grading Studies
- Planning Support
- Traffic and Transportation Planning and Engineering
- Water Resources Engineering
- Surveying, Mapping, ALTA, Right-of-way Engineering
- Emergency and Disaster Response, Support and Recovery Services

EXTENSIVE SIMILAR PROJECT EXPERIENCE:

A partial listing of recent similar scoped projects managed by Transtech include:

Washington Blvd, Widening, Reconstruction, Beautification Project:

- ✓ Project Location: City of Commerce
- ✓ Federally Funded
- ✓ Total Project Cost: \$38M

Rosemead Blvd, Bikeway, Reconstruction, Beautification Project

- ✓ Project Location: City of Temple City
- ✓ Federally Funded
- ✓ Total Project Cost: \$20M



El Monte Ave, Temple City Blvd, and Various Citywide Locations HSIP Projects

- ✓ Project Location: City of Temple City
- ✓ Federally Funded
- ✓ Total Project Cost: \$2.8M

Cactus/Nason Street Improvement Project (135' Span Bridge Project)

- ✓ Project Location: City of Moreno Valley
- ✓ SLPP Grant
- ✓ Total Project Cost: \$21M

ATP Safe Routes to School Improvements Project

- ✓ Project Location: City of Huntington Park
- ✓ Federally Funded
- ✓ Total Project Cost: \$1M

ATP Citywide Crosswalk and Pedestrian Safety Improvement Project

- ✓ Project Location: City of Cudahy
- ✓ Federally Funded
- ✓ Total Project Cost: \$1.2M

TEAM WITH EXTENSIVE EXPERIENCE IN MANAGING SIMILAR PROJECTS FOR PUBLIC AGENCIES:

- One of the unique qualifications of Transtech and its staff is that we work as Contract City Engineers for several agencies.
- We have extensive experience working with Public Agencies in similar assignments, including experience in dealing with Public Agency Staff, Council, and Commissions.
- We are accustomed to working with governmental agencies, and have a good understanding of public agency issues, procedures, and policies.
- We have extensive experience in managing contracts as City staff extension with turn-key service approach.
- Also, our team include Spanish speaking staff members, who will coordinate communications with Spanish speaking persons, and translate notices, flyers, community meetings as part of our services.
- In addition, our team includes CASP (California Access Specialists) to check ADA compliance.

Our Key Team Members include:

ALI CAYIR, PE, Contract Principal: Mr. Cayir has over 30 years of experience. He has participated on numerous multi-disciplinary teams dealing with the planning and development of civil and traffic engineering, urban and rural development, and public works projects. .

MICHAEL ACKERMAN, PE, QSD, QSP, QISP, Sr. Project Manager: Mr. Ackerman has approximately 20 years of experience. His experience includes working at Caltrans District 8 and local Cities.

AL PAGANI, Sr. Construction Manager: Mr. Pagani's career spans 35 years in a supervisory capacity in Southern California involving all aspects of construction for public agencies.

EXPERIENCE WITH METRO AND FUNDING:

The Project is funded under the Goods Movements Improvements mode by the Los Angeles County Metropolitan Transportation Authority (LACMTA) Call for Projects with local matching funds. We have extensive experience in working on similar projects funded by LACMTA, and coordinating and managing funding. Also, we have extensive experience in managing projects in compliance with Caltrans Local Assistance Procedures Manual (LAPM).

LOCAL AND REGIONAL EXPERIENCE:

Our staff members have extensive experience in the local area, as well as working with local and regional agencies, including Caltrans, Metro, Los Angeles County, San Bernardino County, Riverside County, Orange County, and SCAG. Additionally, through our vast experience, our team at Transtech has developed excellent working relationships with utility agencies and railroad companies.



WE BELIEVE OUR TEAM IS WELL QUALIFIED TO PERFORM THE SERVICES REQUESTED:

- ✓ Successfully providing **similar services to many agencies** for nearly 30 years.
- ✓ Proven track record in **on time** and **within budget** project delivery.
- ✓ **Multi-disciplinary** engineering consulting service capabilities to provide an array of municipal services.
- ✓ Ability to **work collaboratively** with agencies, project applicants, and other stake holders, and **communicate effectively** with diverse audiences and stakeholders at public forums.
- ✓ **Efficient and cost effective**.
- ✓ Committed to producing a **high-quality work product and deliver a high level of customer care**.
- ✓ Commitment of **principal level management** and involvement throughout the contract duration.

Thank you for the opportunity to submit this proposal.

Should you have any questions, or require additional information, please contact the undersigned.

Sincerely,



Ali Cayir, PE, Principal

ali.cayir@transtech.org

O: 909-595-8599, Ext. 121

C: 714-883-8677





2. PROJECT SPECIFIC APPROACH, SCOPE OF WORK

PROJECT UNDERSTANDING:

The City is requesting proposals for the purpose providing comprehensive construction management and inspection services for the "Atlantic Boulevard Corridor Improvement Project."

The *Atlantic Boulevard Corridor Improvement Project* (Project) is a major street reconstruction and beautification project along Atlantic Boulevard from Washington Boulevard at the southern limit to Stevens Place at the northern limit that will improve mobility for trucks and vehicles, as well as reduce vehicle/pedestrian conflicts along Atlantic Boulevard.

The Project will consist of significant street pavement and reconstruction, comprising of the following: concrete sidewalk repair, curb ramp repair & installation, pavement excavation & reconstruction, street striping & markings, median island installation, landscaping & lighting, traffic signal street beautification, gateway monument sign, and other improvements

The project was designed by the consulting firm of *BKF Engineers* (BKF).

The estimated construction cost provided by BKF is \$4.5 million.

The total field construction duration is 150 working days. The construction is anticipated to start in early 2019.

The Project is funded under the Goods Movements Improvements mode by the Los Angeles County Metropolitan Transportation Authority (LACMTA) Call for Projects with local matching funds.

While the project does not have federal funds, regardless of funding source, the City follows the guidelines and procedures included in Caltrans Local Assistance Procedures Manual (LAPM) for the administration and management of the construction projects. Therefore, the selected shall manage the project in compliance with LAPM.

Atlantic Boulevard is a heavily travelled street, which also includes truck traffic. There are many driveways that serve adjacent businesses and parking lots along the corridor. Also, several crossing streets provide access to residential areas. The construction will have extensive impacts on parking, adjacent businesses and residents. Therefore, an effective public relations effort and program to keep public informed at all times and responding to public inquiries, comments, complaints effectively is an important task that the selected consultant is required to perform.

Selected consultant is also expected to make three (3) project information and progress presentations at City Council meetings, and at two (2) community meetings. In addition, the selected consultant shall inform the adjacent property owners of the construction activities in advance and provide advanced notices, which may be in the form of advanced construction notices (English and Spanish), as well as frequent construction progress updates.

The selected consultant shall provide necessary services and personnel to manage the project, including resident engineer, construction manager, construction inspection, materials testing and inspection, specialty inspection, funding management, labor



compliance, contract administration, and other necessary tasks.

Following is a general outline of the requirements of the consultants:

- Able to meet and coordinate activities of the City's construction contractor
- Prepare and maintain timely construction schedules
- Able to provide public works and construction inspections
- Able to execute instructions to contractor under stressful conditions
- Able to liaison between the City and the contractor
- Able to create documentation in terms of public inspection reports, contract change orders, etc.
- Able to verify and process contractor invoices
- Able to verify contractor's employee payroll, safe working conditions, etc.
- Able to finish project's goals and develop a "punch-list."

APPROACH

General Approach:

At Transtech, we have long established a structured approach to execute projects in an efficient manner that makes Transtech capable of providing the client with high quality product. Transtech has established guidelines and policies, including written manuals on quality control, project management, and design procedures for its staff. These guidelines ensure a consistent approach to the execution of assignments undertaken by our organization. The

following paragraphs describe our general approach to deliver projects in an efficient and cost-effective manner. A project specific approach will be provided for each assigned project and will become part of the specific contract for the specific project.



- **Project Management:** Our approach is to provide proactive management and attempt to identify potential issues and problems in advance and take corrective actions before they become problems. This requires extensive hands-on knowledge, experience and management skills of the people involved in managing and inspecting the project. Our team members have extensive experience and proven track record in managing large and complex projects and bringing them to a completion on time and within budget.
- **Approach to Cost Control and Change Orders:** We evaluate project costs and develop feasible mitigation measures to minimize additional costs. We work as a team to solve problems or make modifications in the field to address unforeseen conditions or owner generated changes in a cost-effective manner.
- **Approach to Scheduling and Timely Completion of Project and Schedule Recovery:** The baseline schedule should properly identify the project scope, critical path, project milestones, target dates, phases and sequences of work, and activity durations. When significant activities show that they are slipping from the baseline, we work with the contractor to develop recovery plans.



- **Management of Documents:** We use an electronic file management system. All construction forms, daily dairies, weekly statement of working days, etc. are stored in our electronic file system, and are per Caltrans documentation system. We provide these documents at the end of the project to the client in organized files as well as pdf files.
- **Safety and Security:** We hold meetings with the contractor to review and discuss safety and security requirements, OSHA conformance, emergency security and safety procedures, and enforce security and safety responsibilities.
- **Funding Closeout:** We prepare necessary closeout documentation required by the funding agencies, submit final reimbursement documentation, follow-up on the reimbursements, and final funds balance report.
- **Project Closeout:** We recognize that closeout is an important part of the construction process. It signifies that the new facility structure is ready to use. We methodically handle all closeout tasks to ensure a smooth transition from construction to occupancy.
- **Methodology for Communication to Inform City on Work Progress:** Key project team members will attend periodic project progress meetings with City staff throughout the project duration.
- **Electronic common project information and file sharing platform:** We create and provide access to project participates a common project information and file sharing platform.

Proactive Approach:

As construction managers, our role is to manage and inspect the project in compliance with the Client's requirements and Funding Program requirements. There are conditions and elements that effect any construction project, budget and schedule. Our approach is to provide proactive management and attempt to identify potential issues and problems in advance and take corrective actions before they become problems. Our approach to Cost Control and Change Orders includes evaluating project change order cost requests and developing feasible mitigation measures to minimize additional costs. We work as a team to solve problems or make modifications in the field to address unforeseen conditions or owner generated changes in a cost-effective manner.

Contract Administration Approach:

For contract administration, we follow guidelines described in Caltrans Local Assistance Procedures Manual (LAPM). Chapter 16 of LAPM covers the topics beginning with project supervision, contract time, subcontractors, Engineer's daily reports, projects files, construction records and procedures, safety provisions, labor compliance, equal opportunity employment, disadvantaged business enterprise, contract change orders, material sampling and testing, and traffic safety in the highway and street zones. Maintaining complete and accurate files is a very important aspect of managing federally funded projects. Generally, whenever the local agency is unable to produce requested data or information, it is assumed by reviewing personnel that the required actions were either never performed or not properly recorded. Organized project files can minimize these negative assumptions. Organization and content of the project file is one indicator of effective and efficient management of the project by the resident engineer.

Community Information Approach:

We will provide an effective and pro-active community information approach and inform the community of work activities and impacts in advance by delivering notices to them (door hangers), as well as by posting such notices on City's web-site. We will provide our on-site inspector(s) cell numbers on notices so that adjacent residents/businesses can directly contract us, and we will respond and mitigate concerns as feasible. We will maintain a communication log for coordination and communication with public. If



requested, we can also provide an effective public outreach, including setting up a construction information web site, toll free project call number, project e-mail, hold community information meetings, provide public information via e-mails on web sites.

Project Management Tools:

One of the project management and delivery tools we use is Smart Sheets (www.smartsheet.com). It provides an online access to involved parties, where tasks, progress, schedule and other items can be tracked and monitored; task deadline reminders and task status requests are automatically sent to responsible party to update the project real time. This helps to identify project potential issues before they become issues and ensure project delivery on time and within budget.

SCOPE OF WORK:

City's RFP includes an outline of services required from the selected consultant.

Following section provides the City's scope of services outline, which is followed by a detailed scope of work prepared by Transtech:

1. **Pre-construction Phase.** The project has been bid out, and will be awarded to the lowest responsible contractor before the selection of Construction Management Consultant. The selected consultant will provide necessary services, which include coordinating with the Contractor pre-construction activities, pre-con meeting, review of submittals, review of plans and responding to questions and RFI's (including coordinating with the design engineer for necessary clarifications and responses), review of base line schedule that will be submitted by the contractor, and other activities as necessary.
- **Construction Phase.** Provide necessary services and personnel to manage the project, including resident engineer, construction manager, construction inspection, materials testing and inspection, specialty inspection, federal funding and labor compliance, contract administration, and other necessary tasks. The main elements of services include, but are not limited to:
 - Providing necessary construction management, resident engineer, administration, inspections, materials testing and inspection.
 - Maintaining projects files and records.
 - Monitoring schedule.
 - Maintain Engineer's and Inspector's Daily Reports.
 - Managing and processing change orders and pay requests.
 - Managing, responding and processing RFIs and submittals.
 - Conducting construction and project progress meetings with contractor, city staff and stake holders.
 - Managing funding, including preparing required reports and reimbursement invoices to LACMTA.
 - Providing Labor Compliance.
 - Ensuring as-built drawings are properly maintained.
 - Conducting project walk-through(s) and preparing punch list(s).



- Providing public relations and outreach services. The project is along heavily travelled, business and residential areas, and will have extensive impacts on parking, adjacent businesses and residents. Selected consultant is expected to make three (3) project information and progress presentations at City Council meetings, and at two (2) community meetings.

Following paragraphs provide Transtech's approach in detail to accomplish the scope of work and goals on this project:

The scope of work includes activities required to ensure that construction is performed in accordance with the approved plans and specifications. In addition, the process shall comply with and follow policies and procedures described in the **Caltrans Local Assistance Procedures Manual (LAPM)** with special attention to **Chapter 16** to ensure the project complies with federal funding requirements.

Bidding Assistance (NOT APPLICABLE TO THIS PROJECT, BUT PROVIDED AS REFERENCE)

Per the RFP, one of the pre-construction tasks requested by the City is assisting the City in the evaluation of construction bids. Bidding phase is covered in Chapter 15 of LAPM. LAPM requires that the administering agency to follow its own procedures for bid opening, provided such procedures include:

- As bids are received, they shall be logged in and stamped with the time and date.
- The bids shall be retained in a secure place until the designated time and place for public opening.
- All bids received in accordance with the terms of the advertisement shall be publicly opened and announced either item by item or by total amount.
- If any bid received is not read aloud, the name of the bidder and the reason for not reading the bid aloud shall be publicly announced at the bid opening.
- Negotiation with contractors, during the period following the opening of bids and before the award of the contract shall not be permitted.

The administering agency is required to retain the following completed documents for the successful bidder in the project file:

- Exhibit 15-G1: Construction Contract DBE Commitment
- A list of bidders and total amounts bid with an item-by-item breakdown
- The Non-collusion Affidavit
- Exhibit 15-I: Local Agency Bid Opening Checklist

Contract Award (NOT APPLICABLE TO THIS PROJECT, BUT PROVIDED AS REFERENCE)

The contract award is a critical milestone for all federal-aid projects. At this point, the administering agency must have a complete financial package assuring adequate funding for the project. The administering agency shall award federal-aid contracts on the basis of the lowest responsive and responsible bidder. It is the administering agency's responsibility to assure that all successful bidders are licensed contractors upon award of any contract incorporating State or federal-aid funds.

No project shall be advertised for bids, nor shall any project work (by contract or other than contract) be undertaken, and no materials shall be purchased on any federal-aid project, prior to issuance of Authorization to Proceed by Caltrans or the FHWA. Violation of this requirement will result in the project ineligible for federal funding.

Post-Award Reviews (NOT APPLICABLE TO THIS PROJECT, BUT PROVIDED AS REFERENCE)

The administering agency should conduct post-award bid evaluations to assure against bid rigging. An adequate number of projects awarded over a sufficient time period should be evaluated. A period of approximately 5 years should be selected for an initial evaluation to determine if any abnormal competitive bid patterns exist. The following information should be considered in a post-award review for abnormal bid patterns:

- Number of contract awards to a specific firm
- Project bid tabulations



- Firms that submitted a bid and later become a subcontractor on the same project
- Rotation of firms being the successful bidder
- Consistent percentage differential in the bids
- Consistent percentage of the available work in a geographic area to one firm or to several firms over a period of time
- Consistent percentage differential between the successful bid and the engineer's estimate
- Location of the successful bidder's plant versus location of the other bidders' plants
- Variations in unit bid prices submitted by a bidder on different projects in the same bid opening
- Type of work involved
- Number of plans and proposal taken out versus the number of bids submitted
- Any other items that indicate noncompetitive bidding
- On re-advertised projects, if the eventual successful bidder was also low bidder on the first letting

Award Package (NOT APPLICABLE TO THIS PROJECT, BUT PROVIDED AS REFERENCE)

Prior to submitting the first invoice for the construction phase, and within sixty (60) days of contract award, the administering agency must forward the following information as one package to the DLAE:

- Exhibit 15-B: Resident Engineer's Construction Contract Administration Checklist
- Exhibit 15-G1: Construction Contract DBE Commitment
- Exhibit 15-L: Local Agency Contract Award Checklist
- Exhibit 15-M: Detail Estimate (based on award)
- Exhibit 3-O: Sample Local Federal-Aid Project Finance Letter based on the Detail Estimate

The DLAE will review the documents for completeness and accuracy. In addition, the DLAE will provide the project's construction contract award date and Exhibit 15-B to the Construction Oversight Engineer (COE). The administering agency's Resident Engineer assigned to the project must complete and sign the Exhibit 15-B. The purpose of this checklist is to assure that the Resident Engineer is familiar with the federal requirements before the construction begins. Deficiencies in contract administration procedures that cannot be corrected may result in withdrawal of federal and/or state funds from the project. If the Resident Engineer is a consultant, the Local Agency Employee in Responsible Charge shall sign the Exhibit 15-B. Exhibit 15-M and Exhibit 3-O must be prepared outlining all project costs by Improvement Type Code. If the award amount is more, or significantly less than the amount estimated at the time of construction authorization, the Award Package submitted to the DLAE will be used to update the project agreements. The Authorization to Proceed (E-76) and state-issued Finance Letter will be revised to reflect updated project costs. If additional federal funds for the project's construction phase is needed, the administering agency must submit written approval from the MPO/RTPA (for STBG, CMAQ, etc.) or pertinent DLA Office (for HSIP, HBP, etc.) as part of the Award Package.

Resident Engineer

The Consultant Resident Engineer (RE) responsibilities include to identify changes in work activities, approve of alternate methods of construction, issue field orders, draft change orders, and file project records. The RE has the responsibility of enforcing the labor compliance provisions of the contract at the project level. To fulfill this responsibility, the RE and support staff must have a working knowledge of the requirements. Early oversight and enforcement of the labor compliance requirements is preferable to investigations of violations and withholding penalties. In order to accomplish this, the RE will perform or delegate the following tasks:

1. Review the labor compliance provisions of the contract with the contractor at the pre-construction meeting
2. Prepare daily reports
3. Obtain certified payrolls and owner operator listings
4. Check certified payrolls
5. Conduct employee interviews
6. Maintain written evidence of apprentices employed on the project
7. Cross check daily reports, interviews, payrolls and prevailing wage rates
8. Document that the required posters and wage rates are displayed at the job site
9. Compare all force account (time and material) billings to certified payrolls



Pre-Construction Meeting

Transtech team will coordinate and hold a pre-construction meeting between the City, including all relevant City department representatives, the design engineer, and the chosen contractor. Attendees may also include representatives from Metro, Caltrans, UPRR, utility companies, Police and Fire Departments, PW Maintenance, Various other City Departments as necessary, Regulatory Agency Representatives, and any other Stake Holders as necessary. This includes identifying a meeting location, preparing an agenda, attendance and participation in the pre-construction conference. We will prepare meeting minutes for distribution to attendees.

The following Topics are generally included in the pre-construction meeting:

- Safety
- Equal Employment Opportunity
- Labor Compliance
- Subcontracting (including required submittal of the *Exhibit 16-B: Subcontracting Request*)
- DBE (Including submittal of *Exhibit 16-Z: Monthly DBE Trucking Verification*, if necessary)
- NEPA, Permits and Environmental Mitigation Commitment requirements
- Potential Traffic or Pedestrian Handling Issues
- Progress Schedule
- Work Plans
- Quality Control/Quality Assurance
- Materials Requiring Certificates of Compliance
- Materials Requiring Buy America Certificates
- Contract Training (Apprentice) Goals
- Change Order Process
- Dispute Process
- Partnering
- Potential Utility Conflicts

Contract Administration

We will assign a Resident Engineer (RE) to administer the construction contract, coordinate and process correspondence, submittals, Request for Information (RFI), coordinate field changes with the Project Manager, log and issue field orders, write and issue change orders, track budgets and schedule, verify extra work bills, attend construction progress meetings, and provide technical support to the Project Manager. All final decisions regarding contract administration that affect project scope, schedule, or cost rest with the City Project Manager, after conferring with the RE. RE will recommend payment of Contractor progress payments, which will be reviewed and approved by the City Project Manager. Consultant will route all clarifications and interpretations of the Contract Documents to the design engineer and the City when needed or when requested by the Contractor.

Project Files

The project files will contain all data pertinent to the work and to the requirements of the specifications. In general, project files will support:

- adequacy of file control
- conformance to contract specifications, and
- contract payments to the contractor



Organization of Files

Project files will be organized in a format similar order to include the information listed below:

1. **Award Package**

Award Package would be provided by the City, including:

- a. *Exhibit 15-A: Local Agency Construction Contract Administration Checklist*
- b. *Exhibit 15-B: Resident Engineer's Construction Contract Administration Checklist*
- c. *Exhibit 15-M: Detailed Estimate*
- d. *Exhibit 3-O: Sample Local Federal-Aid Project Finance Letter*

2. **Project Personnel**

- a. LPA Project Personnel Sheet (names, titles and phone number)
- b. LPA and Contractor's Emergency Contact Information Sheet
- c. Contractor's letter designating representative authorized to act for the contractor.

3. **Correspondence**

- a. To contractor
- b. From contractor
- c. General

4. **Exhibit 16-A: Weekly Statement of Working Days**

5. **Quality Assurance**

- a. Copy of Quality Assurance Plan
- b. Independent Assurance
 - i. *Exhibit. 16-D: Certification of Proficiency*
 - ii. Certification of Accreditation of Testing Lab (TL-0113)
 - iii. Equipment Calibration Verifications (Nuclear Gauge)
- c. *Exhibit. 16-I: Notice of Material to be Used (Form CEM-3101)*
- d. Acceptance Testing Results and Initial Tests (Make a Category 6d for each material such as, 4d1.i, CI 2 Base Test Summary Log, 4d2.ii CI 2 Base Test Results- 4d2.i AC Test Results Log etc. Include items below for each):
 - i. Test Result Summary Log
 - ii. Test Results
- e. *Exhibit 16-T: Materials Typically Accepted by Certificate of Compliance*
- f. *Exhibit 16-K: Report of Inspection of Material (Form MR-0029)*
- g. Buy America Certifications
- h. *Exhibit 17-G: Corroboration Report*

6. **Engineer's Daily Reports**

- a. Resident Engineer's Daily Report (Exhibit 16-C, or similar)
- b. Assistant Engineer's Daily Report (Exhibit 16-C, or similar)
- c. Structures Engineer

7. **Photographs**

8. **Contract Item Pay Quantity Documents**

- a. *Exhibit 16-Y: Monthly Progress Payment Item Quantity Calculation Sheet, or similar*

9. **Change Orders (CO)**

- a. CO 1
 - i. Approved CO or equivalent (agencies may use their own form or use State form CEM-4900)
 - ii. CO Memorandum/Transmittal Letter or equivalent (agencies may use their own form or use State form CEM-4903)
 - iii. Written Prior Approval to Proceed
 - iv. Independent Supporting Force Account Cost Calculations (if Agreed Price)
 - v. Justification of time extension



- vi. Extra Work Reports
 - b. CO 2 etc
- 10. Progress Pay Estimates and Status of Funds
- 11. Labor Compliance and Equal Employment Opportunity (EEO) records
 - a. Certified Payrolls
 - b. *Exhibit 16-B: Subcontracting Request*
 - c. Photo Documentation of all required posters
 - d. Labor Compliance Interviews
 - e. *Exhibit 16-0: Federal-Aid Highway Contractors Annual EEO Report*
- 12. Disadvantaged Business Enterprise (DBE) Records
 - a. *Exhibit 15-G: Construction Contract DBE Information*
 - b. *Exhibit 15-H: DBE Information - Good Faith Efforts*
 - c. *Exhibit 16-Z: Monthly DBE Trucking Verification*
 - d. DBE Substitution Supporting Documentation (if applicable)
 - e. *Exhibit 17-F: Final Report –Utilization of DBE and First –Tier Subcontractor*

During construction, Transtech team will have contract documentation applicable to this project, and backup records to be available at identified project office for inspection by the City, Caltrans and FHWA at any time. At the end of the project, we will provide a pdf file of the files to the City. The City is required to maintain these files and make them available for review and inspection by Caltrans and FHWA for a minimum of three years after the final voucher is received from FHWA. We use a structured project record-keeping system, and update them as the project progresses, which would facilitate process reviews when requested, and minimize negative findings. We understand the importance of keeping good records of construction activities, which would clearly demonstrate to those concerned that project supervision and control were attained on the project.

Safety Provisions

Federal and State laws have established occupational safety and health standards with which all employers must comply. These laws require an employer to provide a safe place of employment; i.e., one that is reasonably free from danger to life, or health. We will require the contractor under contract specifications to comply with safety rules and regulations. The contractor will be required under the contract specifications to comply with safety rules and regulations (Please see the FHWA Form 1273 section titled Safety - Accident Prevention). The Construction Safety Orders of the California Division of Industrial Safety apply to all federal-aid contracts. In administering this part of the contract, the engineer is required to verify the contractor properly provides a safe work environment for its workmen. Under no circumstances should the contractor be instructed orally or in writing on how to correct a deficiency. The unsafe condition should simply be identified as well as the specific regulation involved, if it is known. In carrying out the responsibilities of assuring safety compliance as a contract requirement, generally, the guidelines provided in Caltrans LAPM will be used:

Construction Observation and Inspection

Transtech will assign an inspector (Consultant Inspector) to the project for **full-time** inspection for the duration of construction. Consultant Inspector shall be primarily responsible for the day-to-day observation of construction activities, including coordination of all construction methods, compliance with National Pollutant Discharge Elimination System (NPDES) / Storm Water Pollution Prevention Plan Best Management Practices, proper implementation of traffic control according to the latest California Manual on Uniform Traffic Control Devices and project plans, and verification that the overall work is completed in conformance with contract documents and



applicable standards. Consultant Inspector will enforce compliance with contract terms through performance measurements, progress pay assessment, coordination, and progress meetings. Consultant Inspector will also monitor the Contractor's progress of work and compare the progress of work against the approved baseline schedule. Consultant Inspector shall have required experience to inspect all elements of the project, including civil improvements, traffic signal improvements, roadway lighting systems, landscaping and irrigation, signing and striping, traffic control, and shall provide other elements included in the construction project.

Transtech will provide administration necessary to manage construction management, observation, and inspection, which may include the following:

Daily Reports

Transtech team will prepare daily reports to record work in progress.

On federally funded projects, the LPA must write daily reports to document the work in progress. These daily reports may be written by the construction inspector, the Assistant RE and/or the RE, as project and staffing needs dictate. The daily report must document what work was performed, where and how it was performed, and who performed it. The details would be sufficient so that someone not familiar with the project could re-create the events that occurred and review of the contractor's costs to perform the work in a manner similar to force account. The report would also document significant events or conversations, and activities performed to ensure contract compliance.

The Daily Reports would generally record the following:

- Names or identification numbers of contractor's personnel
- Respective classifications of workers
- Number of hours worked by men and equipment
- Units of labor, equipment, and material
- Anticipated changes to character of work
- Potential overrun or underrun
- Locations of disputed work or a potential claim
- Completed daily quantities per bid item

The Narrative Portion of the Report would generally include:

- A description of the contractor's operation
- The location where the work was performed
- Statements made by the contractor or LPA personnel, which are pertinent to the work

We use forms similar to *Exhibit 16-C: Resident and Assistance Engineers Daily Report* used by Caltrans. Daily reports are reviewed and signed by the Resident Engineer.

Contract Time Monitoring

Review working days, contract time requirements, and document time extensions according to the requirements set forth in the bid specifications. Any contract time extension approvals should only be made if the justification demonstrates a delay to the controlling item(s) of work in the contractor's schedule. We will maintain a written record of project progress. This record should indicate factors which may affect the work, such as, weather conditions, utility delays, strikes or labor disputes, and material shortages. Based on these factors a record of working days should be maintained, including Weekly Statement of Working Days.



Payment Source Documents

We understand that our team is expected to prepare source documents to support payments made to the contractor. The source documents may include:

- Portion of work applied
- Necessary measurement and/or calculations by which quantity is determined
- Name of individual who made determination

Labor Compliance

Certified payroll documents shall be checked with daily reports to ensure labor compliance for the project. Our team shall conduct random spot interviews with the Contractor's employees and subcontractor's employees on the project. On average, one report per week for each operation being performed is anticipated. The interview shall contain information similar to Caltrans Form CEM-2504.

Quality Assurance

We will oversee that materials incorporated into the project are in conformance with the contract specifications and the City's Quality Assurance Program (QAP). QAP elements may include:

- Certificates of Compliance:
 - Asphalt concrete components (binder, aggregate)
 - Concrete for bikeway path
 - Concrete for boardwalk and piles
 - Electrical materials for traffic signals
 - Striping materials for pavement markings
- Buy America Certificates for steel or iron products
- Job mix formulas/designs
- Plant delivery tickets
- Measurements of atmospheric, pavement, and asphalt temperature during placement of asphalt concrete in accordance with Section 302-5.5 of the Greenbook
- Measurements of field density of compaction during placement of asphalt concrete in accordance with Section 302-5.6.2 of the Greenbook

While not specifically listed in the City's RFP and scope of work, it is anticipated that an Independent Assurance (IA) may be required under funding guidelines. The IA program consists of activities that are unbiased and are an independent evaluation of all the sampling and testing procedures used in the acceptance program. In order to further enhance the quality and accountability of services we are proposing, Transtech will bring a separate sub-consultant to perform this task if requested.

Progress Meetings

Once the Contractor is on site, we will arrange and conduct bi-weekly progress meetings with the City, Contractor, and other relevant project contributors.

Public Relations/Outreach

During construction, we will provide public outreach support for the City to nearby residents and businesses to provide project information, schedule, and street closure information to affected residents and businesses and other members of the public. This public information activity includes the following tasks:

- Review Contractor project schedule, phasing, and look-ahead schedules to identify construction activities that could affect nearby businesses.



- Prepare flyers and other informational items for dissemination to nearby residents and businesses as well as the City Public Information Officer for wider release.
- Coordinate with Contractor to minimize impact to nearby residents and businesses including reasonable modification to project schedule, phasing, and other activities to accommodate resident/business needs.

Project Punch List

We will conduct a final compliance inspection with the contractor and prepare a final list of items to be completed or corrected.

Record Drawings

We will coordinate preparation of record drawings for the Project to ensure that markups provided by the Contractor and Consultant Inspector are integrated by the design engineer into project as-built plans and cross-checked with construction submittals, RFIs, and change orders.

Acceptance Testing (AT) and City's QAP

For the Acceptance Testing (AT) of this project, per approved City's QAP, we will use materials laboratory certified to perform the required. The tests results will be used to ensure that materials incorporated into the project are in compliance with the contract specifications. Testing methods will be in accordance with the CT Methods or a national recognized standard (i.e., AASHTO, ASTM, etc.) as specified in the contract specifications. Sample locations and frequencies may be in accordance with the contract specifications. If not so specified in the contract specifications, samples shall be taken at the locations and frequencies as shown in City's approved QAP.

Final Report of Expenditures

We will assist the City in the compilation of Final Report of Expenditures by providing information and documentation applicable to Construction Phase services provided by our firm.

Funding Management

Transtech will manage funding, including preparing required reports and reimbursement invoices to LACMTA.





3. PROPOSED PROJECT SPECIFIC STAFF

Unique Qualifications:

- One of the unique qualifications of Transtech and its staff is that we work as Contract City Engineers for several agencies.
- We have extensive experience working with Public Agencies in similar assignments, including experience in dealing with Public Agency Staff, Council, and Commissions.
- We are accustomed to working with governmental agencies, and have a good understanding of public agency issues, procedures, and policies.
- We have extensive experience in managing contracts as City staff extension with turn-key service approach.
- Also, our team include Spanish speaking staff members, who will coordinate communications with Spanish speaking persons, and translate notices, flyers, community meetings as part of our services.
- In addition, our team includes CASP (California Access Specialists) to check ADA compliance.

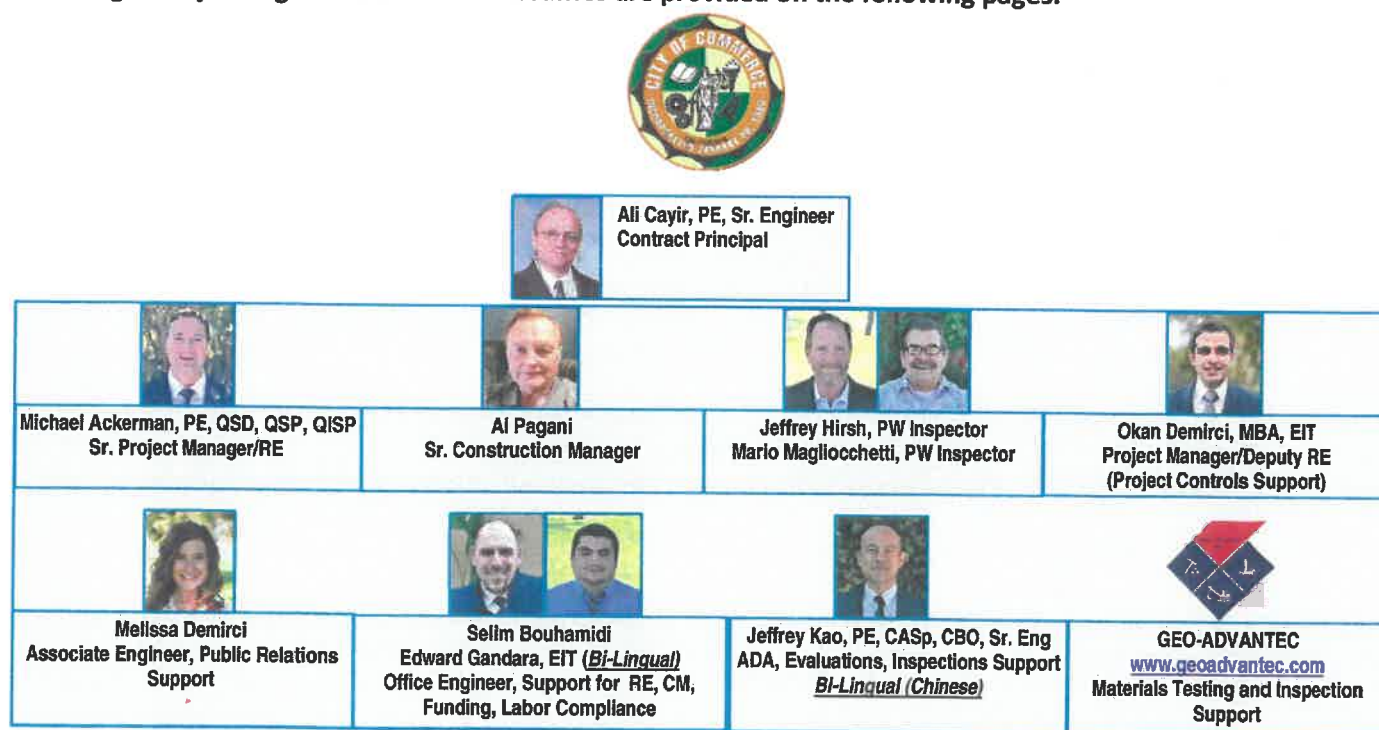
Licenses and Certificates of the Firm and Staff Members in Diversified Fields:

- ICC Certified Building Official
- ICC Certified Sustainability Professional
- CASp, California Access Specialist
- ICC Certified Building, Electrical, Mechanical, Plumbing Plans Examiner
- Accessibility Plans Examiner
- CalGreen-California Green Building Plan Examiner
- ICC Certified Commercial Building, Electrical, Mechanical, Plumbing Inspector
- Accessibility Inspector
- CalGreen-California Green Building Inspector
- IAPMO Certified Plumbing, Mechanical Inspector CA Commercial, Res Plumbing Inspector UPC
- CA Residential Mechanical Inspector
- CACEO Certified Code Enforcement Official
- Professional Licensed Engineer (PE, SE, ME, EE)
- Professional Licensed Traffic Engineer (TE)
- Professional Licensed Land Surveyor (PLS)
- Qualified Storm Water Pollution Prevention Plan Developer (QSD); Practitioner (QSP), Industrial Practitioner (QSIP)
- Licensed General Contractor A and B

Our company and staff members are members or serve on various committees:

- American Public Works Association (APWA)
- American Society of Civil Engineers (ASCE)
- Construction Management Association of America (CMAA)
- Chair; ICC Sustainability Membership Council
- Chair; ICC LA Basin Chapter Inspection Committee
- Commissioner; ICC Codes & Standards Council
- Commissioner; CALBO Green Committee
- Commissioner; ICC/CALBO CA Exam Committee
- Commissioner; CALBO Outreach/Communications Committee
- ICC Los Angeles Basin Chapter Board of Directors
- ICC Building Officials Membership Governing Council
- ICC Code Development Committee Vice Chair
- ICC Technology/Web Advisory Group
- IAS Accreditation Committee
- ICC LA Chapter Accessibility Committee

Following is Project organization Chart. Resumes are provided on the following pages.



ALI CAYIR, PE, Sr. Engineer, Contract Principal

Mr. Cayir has over 30 years of experience in engineering. He has participated on numerous multi-disciplinary teams dealing with the planning and development of civil and traffic engineering, urban and rural development, and public works projects. He served as Principal Project Manager for the design, construction and management of a variety of projects, including:

- Public Works and Infrastructure Improvements
- Educational and University Campuses
- Institutional
- Commercial and Retail
- Transportation and Parking Facilities
- Residential and Master Community Development

EDUCATION

- BS Engineering
- MBA
- Project/Construction Management, UC Irvine

REGISTRATION

- Registered Civil Engineer
- Licensed Gen Contractor A
- Licensed Gen Contractor B

HIGHLIGHTS

- 30 years of experience in City Engineering.
- Served as contract City Engineer and City Traffic Engineer for many Cities.
- Extensive experience in grant programs. Secured over \$20m in funding for during last 2 cycles of MTA Call for Projects Applications.
- Extensive experience in working with Caltrans, County of Los Angeles and other regional agencies and Utility Companies.
- Extensive experience in NPDES requirements.
- Extensive experience in the management and administration of federally and state funded projects in compliance with Caltrans Local Assistance Procedures Manual (LAPM).
- Served as Resident Engineer

Mr. Cayir served as contract City Engineer, Traffic Engineer and Interim Public Works Director for many municipalities in Southern California. He has a broad knowledge of municipal government operations, including preparation and presentation of staff reports/resolutions to city councils, committees and interaction with public, various city departments, city council and other governmental agencies.

Construction Management Experience

Mr. Cayir has served as CM, PM, RE for numerous construction projects. He has extensive experience in Federally Funded Projects. Mr. Cayir also served as contract City Engineer for many municipalities. Some of the significant projects where Mr. Cayir served as CM/PM/RE/Project Principal include:

- Washington Boulevard Widening and Reconstruction Project (Federally Funded), City of Commerce (\$30m). Transtech provided CM/Resident Engineer, Inspector, Office Engineer Services. The project includes widening and reconstruction of 2.7 miles of Roadway (including approx. 3,500 tons rubberized AC overlay). The project is federally funded and being managed in compliance with Caltrans Local Assistance Procedures Manual.
- Rosemead Boulevard Improvements Project, City of Tempe City (Federally Funded) (\$20m). Transtech provided CM/Resident Engineer, Inspector, Office Engineer Services. The project included widening and reconstruction of 2 miles of roadway (including approx. 6,000 tons rubberized AC overlay). The project was federally funded and managed in compliance with Caltrans Local Assistance Procedures Manual.
- Cactus Avenue and Nason Street Improvements and 135' Span Bridge Project, City of Moreno Valley (\$21m). Transtech provided CM/Resident Engineer, Inspector, Office Engineer Services. The funding included State Local Partnership Program (SLPP) grant and was inspected and managed in compliance with Caltrans Local Assistance Procedures Manual.
- Rte 71/Mission Bl Grade Separation Project (Federally Funded) City of Pomona (\$40m). Transtech provided CM/Resident Engineer, Inspector, Office Engineer Services. Project was inspected and managed in compliance with Caltrans Local Assistance Procedures Manual. Caltrans was the oversight/jurisdictional Agency.
- Bogert Trail Bridge Widening Project (Federally Funded), City of Palm Springs (\$5m). Transtech provided CM/Resident Engineer, Inspector, Office Engineer Services. The project is federally funded and being managed in compliance with Caltrans Local Assistance Procedures Manual.
- Eastern Avenue Street Rehab Project, City of Commerce (\$1.5m). Transtech



on several Federally Funded Projects.

provided CM/Resident Engineer, Inspector, Office Engineer Services. Funded by Measure AA Funds. Project is being inspected and managed in compliance with Caltrans Local Assistance Procedures Manual. Project involved Full Depth Reclaimed Pavement Rehabilitation.

- 2016, 2017 Street Rehab Project, City of Commerce (\$4m). Transtech provided Design and CM, Inspection Services.
- SR2S, BTA and Pavement Rehabilitation Projects (State Funded), City of Temple City (\$2m). Transtech provided CM/Resident Engineer, Inspector, Office Engineer Services. Project was inspected and managed in compliance with Caltrans Local Assistance Procedures Manual. Project involved pavement rehabilitation (rubberized AC overlay), curb and gutter, sidewalk, traffic signals, utilities, and other misc. improvements.
- 710 Freeway Interim Improvements and Fremont Widening Project (Federally Funded), City of Alhambra (\$15m). Transtech provided CM/Resident Engineer, Inspector, Office Engineer Services. Project was inspected and managed in compliance with Caltrans Local Assistance Procedures Manual. Project also involved coordination with Caltrans for work at the 710 Freeway ramps under Caltrans Encroachment Permit.
- Main Street Rehabilitation, from West to East City Limit Project, City of Alhambra (\$3m). Provided CM/Resident Engineer, Inspector, Office Engineer Services. Project was inspected and managed in compliance with Caltrans Local Assistance Procedures Manual.
- City of Alhambra Downtown Revitalization Program: Involved 11 projects, including Renaissance Plaza (multi-plex theater, public plaza with fountain and unique art features, restaurants, retail, 800 space parking structure), Fremont Plaza (modifications/reconstruction of existing buildings for lease by ToysRUs and Party City, construction of a new 30,000 SF store for PetSmart, and various other retail buildings) and Downtown Revitalization (modification/upgrade of existing buildings for Starbucks, 4 Restaurants and various retail businesses). (Cost: \$80m).
- City of Alhambra 4 parking structures: Transtech served as turn-key project manager, including management of design, construction, building plan check and inspection, federal funds, labor compliance for 4 parking structure projects. Chapel: 4 stories, 300 space structure; First Street: 4 stories, 276 space structure; Garfield: 5 stories, 800 space structure. Cost \$15m; North First Street Mosaic: 5 stories, 320 space structure, Cost \$6m.

Civil Engineering Experience

- I-710 Freeway Interim Improvements and Fremont Widening and Reconstruction: Transtech provided Turn-key Services, including Program Management, Construction Management, Design, Surveying, Right-of-Way Engineering, and Environmental. The project included major roadway improvements, removal/demolition of various buildings for additional right-of-way and reconstruction of buildings behind new right-of-way, traffic signals, infrastructure, utilities, pavement, drainage, water, sewer, landscape, street lighting, traffic signal, pavement improvements. Project was funded by Federal Funds, and was managed and inspected in compliance with Caltrans Local Assistance Procedures Manual. (Cost \$15m).
- University Park Development/San Bernardino: The project included 2 miles of new roadway, sewer, water, utility and extensive hill side grading for a master planned residential and commercial development on 130-acre site across from the San Bernardino State University. Cost \$40m.



- City of Torrance, Crenshaw Reconstruction, Skypark Improvements, 190th/Crenshaw Widening: Design, construction management services, including inspection, surveying, resident engineer, federal compliance, labor compliance. Project was funded by Federal Funds, and was managed and inspected in compliance with Caltrans Local Assistance Procedures Manual. Cost: \$5 m.
- Valley Boulevard Widening and Reconstruction project which is funded by State and Federal funds and required complete project and environmental report, including Right-of-Way, Relocation, SHPO, NEPA, SEQA, Noise, Parking, Economic, Hazardous Materials technical studies, and processed through Caltrans and FHWA. Construction cost (\$6m).
- Carlsbad to San Diego Rail Trail Project Report, which is funded by State and Federal funds and required complete project and environmental report, including Right-of-Way, Relocation, SHPO, NEPA, SEQA, Noise, Parking, Economic, Hazardous Materials technical studies, and processed through Caltrans and FHWA.
- Alameda Corridor Agency East (ACE) Rail Grade Crossing Improvement Project encompassing 6 agencies and 14 locations in Los Angeles County. Work involved roadway realignment and reconstruction, signalization, traffic control, and construction phasing as well as related improvements such as storm drain, water, sewer landscaping, underground utilities, etc. Cost \$5,000,000.

Traffic Engineering Experience

- Design and management of a variety of traffic and transportation engineering projects, including traffic signals (more than 1000 locations), traffic signal interconnect system, street lighting, traffic control, signing and striping design; signal timing and coordination studies; traffic signal management studies; traffic safety projects (OTS) including traffic control device inventories and speed surveys; traffic impact and parking studies for more than 100 projects; and feasibility studies for traffic control measures, freeway access, bikeways and street improvements. Mr. Cayir has also served as consultant Traffic Engineer for various agencies in Southern California.
- Project Manager/Engineer for the preparation of ramp metering, count station, traffic signal, highway lighting, sign lighting, construction signing, pavement delineation, communication, and other traffic related plans for several state highways and freeway improvement projects involving Caltrans Districts 7, 8 and 12.
- Project Manager for the preparation of traffic signal modifications and installation, interconnect and radio corrected time base system installation plans and estimates in conjunction with traffic signal synchronization projects for various arterials in Los Angeles County including Garvey Avenue, El Segundo Boulevard, Crenshaw Boulevard, Slauson Avenue, Rosecrans Avenue, Arrow Highway and Huntington Drive/Alosta Avenue/Foothill Boulevard. Signal modification improvements included equipment upgrades, signal phasing upgrades and installation of radio correct time base units (WWV) for signal coordination as well as physical intersection improvements.
- Project Manager for the preparation of signal timing and coordination plans for multiple locations on major arterials in Los Angeles County including Main Street, Garvey Avenue, Crenshaw Boulevard and Slauson Avenue.
- Project Traffic Engineer for the proposed Materials Recovery Facility in the City of Industry. This project involved the preparation of a comprehensive area wide traffic impact study to identify the potential impacts associated with development of a proposed Materials Recovery Facility (MRF) in the City of Industry. The study area encompassed 32 intersections and several freeways such as SR 60 and SR 57.



MICHAEL ACKERMAN, PE, QSD, QSP, QISP, Sr. Engineer, Resident Engineer

Mr. Ackerman has over 20 years of experience. At Transtech, he has been working as a Sr. Engineer at various Transtech City Engineering Contracts. He has served at various Cities under Transtech's City Engineering Contracts, including Temple City, Huntington Park, and Alhambra. He has a broad knowledge of municipal government operations, including preparation and presentation of staff reports/resolutions to city councils, committees and interaction with public, various city departments, city council and other governmental agencies.

Mr. Ackerman's experience also includes working at Caltrans and other agencies:

Caltrans District 8: Mr. Ackerman was a civil transportation engineer for Caltrans District 8 where he was involved in the design and construction of various projects.

- **Construction Division:** In the Construction Division, Mr. Ackerman was Resident Engineer for various projects, including:

- Watson Wash Bridge Replacement Right (Rte 40)
- Replacement of Drains and Earthwork (Rte 40)
- Fenner Overhead Bridge Replacement (Replacement of two bridges over BNSF Railroad, Rte 40).

- **Design Division:** Designed plans, specifications, and estimates for the rehabilitation of Route 10 freeway from the Riverside/San Bernardino County line to Beaumont.

- **Traffic Operations Division:** Performed studies and analyses to interpret and mitigate above average accident volume areas on highways and freeways. Also, he performed traffic studies.

City of San Bernardino: Mr. Ackerman held the position of Associate Engineer under City Engineer of the Division of Public Works in the Department of Development Services. He was involved in various projects including Development Review and Plan Check, design and review of Street Improvement Plans, Rough and Precise Grading Plans, Sewer Plans, Storm Drain Plans, Street Lighting Plans, Storm Water Pollution Prevention Plans, Water Quality Management Plans, Geotechnical Reports, and Hydrology/Hydraulic Studies, land development, industrial, commercial, residential, and transportation development projects including Tract and Parcel Maps. He also directed and performed plan check of improvement plans submitted by developers to the City.

City of Huntington Park: Mr. Ackerman worked as contract City Engineer under Transtech's municipal services contract and later as City Engineer and Interim Director of Public Works under the City.

As City Engineer, Mr. Ackerman performed the following responsibilities:

- Planned, coordinated, and directed the activities of the Engineering Division;
- Supervised the preparation of designs, specifications, plans, estimates and reports involved in the construction of public works engineering projects, such as storm drains, sewer systems, and water facilities;
- Reviewed and approved engineering plans, specification and contract documents;
- Analyzed bids and supervises the preparation of contracts;
- Prepared reports for the various governing bodies concerning economic comparison, environmental impact studies, subdivisions, land use conversion, and capital improvements
- Planned, coordinated and directed the traffic engineering functions of the City including traffic control device installations, traffic studies and local and regional area traffic growth management;
- Represented the Division to other City departments, elected officials and outside agencies; explained and justified Engineering Division programs, policies and activities; negotiated and resolved sensitive, significant and controversial issues;

EDUCATION

- Bachelor of Science in Engineering, the University of Iowa
- Land Development Desktop, AutoCAD Civil 3D, and Microstation Certification - Westech College

REGISTRATION

- Registered Civil Engineer

CERTIFICATIONS

- Resident Engineer Academy, Caltrans
- Water Pollution Control Compliance on Construction Sites for Resident Engineers, Caltrans
- Asphalt Pavement Fundamentals: Design, Construction, and Rehabilitation
- Construction Program Management Workshop, FHWA
- Field Office Procedures Course, Caltrans
- California Work Zone Inspection – High Speed, Caltrans
- Asphalt Concrete Inspection and Rehabilitation Strategies, Caltrans



HIGHLIGHTS

- 20 years of experience in City Engineering.
- Experience includes working for Caltrans and City of San Bernardino.
- At Caltrans, served as Resident Engineer for many projects.
- At City of San Bernardino, worked under the City Engineer, and was responsible for Capital Projects.
- Extensive experience in working with Caltrans.
- Extensive experience in NPDES requirements.
- Extensive experience in the management and administration of federally and state funded projects in compliance with Caltrans Local Assistance Procedures Manual (LAPM).
- Served as Resident Engineer on several Federally Funded Projects.

- Managed and participated in the development and administration of the Engineering Division budget; participated in the preparation of and implement budgetary adjustments;
- Coordinated Engineering Division activities with those of other departments and outside agencies and organizations; provided staff assistance to the City Manager and City Council; prepared and presented staff reports and other necessary correspondence;
- Participated on a variety of boards and commissions; attended and participated in professional group meetings; stayed abreast of new trends and innovations in the engineering field.

Public Works Projects Experience:

Mr. Ackerman has also served as Project Design Engineer, Project Manager, and Construction Manager/Resident Engineer on a number of projects. Partial listing of projects representative of his project experience on recent projects include:

- Project Engineer for City of Commerce, Garfield Avenue Telegraph Road to Malt Avenue Street Improvements; Eastern Avenue Pavement Overlay Stevens Thru City Boundary; Garfield Avenue and Slauson Avenue Intersection Improvements; Washington/Ayers Intersection: Prepared PS&E. Federally funded projects as part of Stimulus Program.
- Project Engineer for City of Commerce - Master Sewer Study Telegraph Corridor revitalization project: Documentation of existing system. Design capacity analysis based upon land use designations. Produced master plan study report for the project along with cost estimates.
- Resident Engineer for Rosemead Safety and Enhancement and ADA Improvements Project. Served as the Resident Engineer for the Rosemead Safety and Enhancement Project. The project includes widening and reconstruction of 2 miles of Rosemead Boulevard, including new medians, bike lanes, signals, sidewalks, curb & gutter, street lighting, landscape, street scape. The project is federally funded and is managed in compliance with Caltrans Local Assistance Procedures Manual. Cost \$20m.
- Principal CM/Resident Engineer for Valley Boulevard Rehabilitation and ADA Improvements Project (Federally Funded), Alhambra: Project involved reconstruction, pavement overlay, medians, landscape, curb and gutter, sidewalk, traffic signals and other misc. improvements. Project was inspected and managed in compliance with Caltrans Local Assistance Procedures Manual. Project also involved coordination with Caltrans for work at the 710 Freeway ramps under Caltrans Encroachment Permit. Project was completed in various phases, including night time construction for several phases, to minimize inconvenience to public on this heavily travelled major Arterial.
- Principal CM/Resident Engineer for New Avenue, from North to South City Limit Rehabilitation and ADA Improvements Project (Federally Funded), Alhambra: Project involved reconstruction, pavement overlay, curb and gutter, sidewalk, traffic signals and other misc. improvements. Project was inspected and managed in compliance with Caltrans Local Assistance Procedures Manual. Project also involved coordination with Caltrans for work at the I-10 Freeway ramps under Caltrans Encroachment Permit.
- Principal CM/Resident Engineer for Garfield Rehabilitation and ADA Improvements Project (Federally Funded), Alhambra: Project involved reconstruction, pavement overlay, curb and gutter, sidewalk, and other misc. improvements. Project was inspected and managed in compliance with Caltrans Local Assistance Procedures Manual.
- Project Engineer for CSUSB (Cal State SB University) San Bernardino Main Access Road: Prepared PS&E and provided construction administration for the project. Project involved design of a new roadway for a length of approximately 1.5 miles, and include street, medians, landscape, lighting, traffic signals, water, sewer, storm drain and various other utilities.
- Project Engineer for University of California, Riverside - West Campus Infrastructure: Prepared West Campus Infrastructure Development Design/Study, which identified utility and surface infrastructure requirements, and how these improvements could be phased to accommodate proposed campus growth, for an area of 236.8 acres to support approximately 5 million gross square feet of academic, research, support, and student housing facilities.



AL PAGANI, Sr. Construction Manager**EDUCATION**

- BA
- MBA

CERTIFICATIONS

- DBIA
- USGBC
- LCI
- ACI
- AISC

HIGHLIGHTS

- 35 years of construction experience serving as job superintendent and construction manager.
- Significant experience in the construction of affordable housing and mixed-use projects for non-profit corporations, for-profit developers, and public agencies.
- Constructed over 2,000 housing units including rental apartments, townhomes, condominiums, and transitional housing for families, seniors, and persons with special needs.
- Familiar with various funding sources for these projects, including State and Local Housing and Redevelopment Programs, Low Income Housing Tax

Mr. Pagani's career spans 35 years in a supervisory capacity in Southern California involving all aspects of construction. His career includes all levels of construction including all aspects of residential construction, major project construction such as new school construction, school modernization, medical buildings, higher education facilities, major public projects including such project as historical restoration and adaptive reuse projects, libraries, civic centers and in the private sector from conceptual and planning to completion of construction.

Mr. Pagani has served as Sr. Construction Inspector and/or Construction Manager for a number of projects. Some of the significant projects are listed below:

- Washington Boulevard Widening and Reconstruction Project (Federally Funded), City of Commerce (\$38m). Transtech provided CM/CI/Resident Engineer, Inspector, Office Engineer Services. The project included widening and reconstruction of 2.7 miles of Roadway, Traffic Signals, Street Lighting, Landscape, Improvements at I-5 and at 710 Freeways ramps. The project was federally funded and was managed in compliance with Caltrans Local Assistance Procedures Manual. The project was also a Caltrans Oversight Project.
- Eastern Avenue Street Rehab Project, City of Commerce. Transtech provided CM/Resident Engineer, Inspector, Office Engineer Services. Funded by Measure AA Funds. Project is being inspected and managed in compliance with Caltrans Local Assistance Procedures Manual. Project involved Full Depth Reclaimed Pavement Rehabilitation.
- SR2S, BTA and Pavement Rehabilitation Projects (State Funded), City of Temple City. Transtech provided CM/Resident Engineer, Inspector, Office Engineer Services. Project was inspected and managed in compliance with Caltrans Local Assistance Procedures Manual. Project involved pavement rehabilitation (rubberized AC overlay), curb and gutter, sidewalk, traffic signals, utilities, and other misc. improvements.
- City Hall Addition, City of Commerce (\$6m). Transtech served as construction manager. The project involved construction of a new 20,000 SF addition to the City Hall and remodel of existing City Hall.
- Construction Manager for City of Commerce, City Hall Addition and Library Modification. Transtech served as construction manager. The project involved construction of a new 20,000 SF addition to the City Hall and remodel of existing City Hall and modifications to existing Library as necessary.
- Construction Manager for University Park Development Project in the City of San Bernardino. The project included grading, roadway, infrastructure, drainage, water, sewer, improvements related to a residential and commercial site development. Transtech also provided civil engineering design services for the project.
- Construction Manager for Valley, I-710 Freeway Interim Improvements and Fremont Widening and Reconstruction in the City of Alhambra. Services included design, construction management, and inspection. The projects included grading, major roadway improvements, including removal/demolition of various buildings for additional right-of-way and reconstruction of buildings behind new right-of-way, infrastructure, utilities, pavement, drainage, water, sewer, landscape, street lighting, traffic signal, pavement improvements. Projects were funded by Federal Funds, and was managed and inspected in compliance with Caltrans Local Assistance



Credits, Tax Exempt Bonds and Conventional Financing, Historic Tax Credits, and HUD Section 202 & Section 811 Programs.

- Experience includes both working for public agencies and private sector.

Procedures Manual in compliance with Federal Funding Requirements. Coordinated with project participants, including Caltrans, County of Los Angeles, City of Alhambra and MTA.

- Construction Manager for City of Hawthorne-Rosecrans roadway widening, 405 Freeway ramp widening. Transtech served as construction manager, including inspection, surveying, resident engineer, federal compliance, labor compliance.
- Construction Manager for City of Alhambra 45,000 sf Public Library and 2 Level 200 car Underground Parking Garage. The project included extensive grading for 2 levels of underground garage, shoring, 2 story library, 2 levels of underground parking garage, utilities, street paving, sidewalk, and landscape. Transtech served as turn-key program manager, including design, construction management, building plan check and inspection.

Mr. Pagani's experience with other firms include:

As a contractor, AI also has significant experience in the construction of affordable housing and mixed use projects for non-profit corporations, for-profit developers, and public agencies. He constructed over 2,000 housing units including rental apartments, townhomes, condominiums, and transitional housing for families, seniors, and persons with special needs. He is very familiar with various funding sources for these projects, including State and Local Housing and Redevelopment Programs, Low Income Housing Tax Credits, Tax Exempt Bonds and Conventional Financing, Historic Tax Credits, and HUD Section 202 & Section 811 Programs. Some of recent projects completed by AI include:

- Bell Air Summit Apartments 30 Retrofit and renovate units of two-story apartments / town homes.
- San Pablo Senior Apartments 82 Unit Senior Apartment Building 1 story podium parking deck.
- Villa Santa Fe Apartments 81 affordable apartments complex comprised of 10 building with pool and playground amenities.
- Vinton Avenue Apartments 35-Unit four-story apartment complex over two levels of subterranean parking.
- Los Angeles Unified School District, Valley Region Elementary School No. 10 Project, 52,000-SF, 25 million dollar K-12 project. Winnetka, CA
- Los Angeles Unified School District, Valley Region Elementary School No. 12 Project, 50,000-SF, 28 million dollar K-12 project. North Hills, CA
- Los Angeles Unified School District, Central Region MacArthur Park Elementary School Addition, a 37,400-SF, 18 million dollar K-12 project. Los Angeles, CA
- Los Angeles Pierce College, Center for the Sciences, 100,000-SF, 43 million dollar classroom and laboratory project. Woodland Hills, CA
- Los Angeles City College, Martin Luther King Library. 40,000-SF, 25 million dollar library and classroom project. Los Angeles, CA
- Los Angeles City College, Science and Technology classroom, 48,000-SF, 24 million dollar classroom and laboratory project. Los Angeles, CA
- West Los Angeles Community College Math and Science Buildings, 60,000-SF, 40 million dollar classroom and laboratory project. Culver City, CA
- West Los Angeles Community College General Classrooms and Student Services Buildings, 100,000-SF, 43 million dollar project. Culver City, CA
- Los Angeles Mission College, Family and Consumer Studies Building, 73,000-SF, 39 million dollar culinary arts project. Sylmar, CA



OKAN DEMIRCI, MBA, EIT, Project Manager (Project Controls Support)

Mr. Demirci has approximately 9 years of experience. Mr. Demirci serves as Assistant Public Works Director and Assistant City Engineer at Transtech's Contract Cities and provides technical and management support.

Mr. Demirci completed Caltrans Resident Engineer Academy, very familiar with the management and administration of federally and state funded projects in compliance with Caltrans Local Assistance Procedures Manual (LAPM).

Mr. Demirci works as Project Manager on various projects (including federal and state funded projects) from project inception to closeout.

Examples of his project experience includes:

EDUCATION

- MBA, Brandeis University, Massachusetts
- BS, Engineering, Sabanci University, Turkey

HIGHLIGHTS

- Serves as CIP Program Manager and Assistant Public Works Director and Assistant City Engineer at Transtech's Contract Cities.
- Completed Caltrans Resident Engineer Academy, very familiar with the management and administration of federally funded projects in compliance with Caltrans Local Assistance Procedures Manual (LAPM).
- Strong knowledge of MS Project, Primavera, AutoCAD

- **City of Monterey Park, Assistant to the Interim PW Director and CIP Program Coordinator:** Mr. Demirci serves as an assistant to the Interim PW Director. As part of his responsibility, he coordinates Capital Improvement Projects (CIP) program at the City. Mr. Demirci prepares PS&E packages for various projects for Parks & Rec and Public Works Department. He also provides project management to various projects from project inception to project close out for the City. Highlighted projects are:
 - Parks & Rec Master Plan Development and Construction of Improvements at 13 parks (including picnic shelters, playgrounds, irrigation systems installations and ADA improvements). Cost \$1.5m
 - Citywide Parking Lot Reconstruction and Various City Facility Restoration/Maintenance (including Cascades Waterfall Restoration, City Pool Maintenance, Various other City facility maintenance). Cost \$2.5m
- **City of Temple City, Assistant City Engineer (Transtech serves as Contract City Engineer):** Mr. Demirci serves as Assistant City Engineer. His main responsibilities include managing City's CIP program. Mr. Demirci prepares PS&E packages for various City projects and manages CIP projects from project inception to project closeout. Highlighted projects are:
 - City's Annual Pavement Management Program: Mr. Demirci prepared and managed City's PMP since 2013. He coordinated in preparation of bid packages following recommendations from PMP and managed projects in PE and CE phases. Annual cost: \$1.5m
 - Pedestrian and Bike Safety Improvements on Temple City Blvd, El Monte and Various Locations Citywide (HSIP Federally Funded): Mr. Demirci worked as project manager in PE and CE phases of federally funded projects. These projects were managed in compliance with applicable federal requirements. Cost: \$1.5m
- **City of Cudahy, Pedestrian Safety Improvements, (ATP):** Served as Project Manager for this \$1.0m project. Project includes construction of pedestrian safety improvements such as curb extensions, installation of traffic devices, signs, striping.
- **City of Cudahy, Lugo Park, Soccer Field Project (CDBG Federally Funded):** Served as Project Manager for this \$1.6m project includes construction of a regulation new soccer field with artificial turf on existing baseball field, DG walking path, landscaping, parking lot expansion, concrete plaza, lighting, drainage, bathroom and concession stand ADA improvements. The project is CDBG federally funded and being managed in compliance with applicable CDBG requirements.



- **City of Commerce, Slauson Avenue ADA Improvements and Tree Replacement Project:** Served as Project Manager for this \$1.2m ADA Improvements and tree replacement project.
- **City of Commerce, 2016 City-wide Street Rehabilitation Project:** Served as Project Manager for this \$4m street rehabilitation project.
- **City of Temple City, Council Chambers Renovation and ADA Improvements Project:** Served as Project manager for the preparation of the plans, specifications and cost estimates and bid package for the renovation and ADA improvements of the Council Chambers Building. The improvements included complete reconstruction/renovation of the Council Chambers with new seating, dais, carpet, lighting, AV system, and new ADA compliant bathrooms, new ADA compliant access to the building, new emergency generator and electrical work, re-design of building creating a space for Emergency Operations Center, asbestos removal, painting and other various improvements. Cost approximately \$0.5m.
- **City of Temple City, CDBG ADA Improvements Project:** Served as Assistant Project manager for the preparation of the plans, specifications and cost estimates and bid package as well as field reviews for ADA and sidewalk improvements at various locations thru out the City under CDBG funds. Cost approximately \$0.4m
- **Deputy Project Manager, Supporting/Backup Office Engineer for Rosemead Safety and Enhancement and ADA Improvements Project:** Served as one of the Office Engineers for the Rosemead Safety and Enhancement Project. The project included widening and reconstruction of 2 miles of Rosemead Boulevard, including new medians, bike lanes, signals, sidewalks, curb&gutter, street lighting, landscape, street scape. The project is federally funded and is managed in compliance with Caltrans Local Assistance Procedures Manual. Cost \$20m.



SELIM BOUHAMIDI, Office Engineer, Support for RE, CM, Funding, Labor Compliance**EDUCATION**

- MA, Urban Planning, University of California, Los Angeles.
- BA, Anthropology, University of California, Los Angeles

HIGHLIGHTS

- Resident Engineer Academy, Caltrans
- LAPM/Federal-aid Process Training
- SR2S Funding Workshop, Caltrans
- Metro FTIP Workshop
- Metro Call for Projects Funding Workshop
- Metro ATP Funding Workshop
- Extensive experience in the management and administration of federally and state funded projects in compliance with Caltrans Local Assistance Procedures Manual (LAPM).
- Also worked for the City of Riverside Urban Planning Department.

Mr. Bouhamidi has over 15 years of experience, and serves as a Project Manager/Coordinator at Transtech Contract Cities on as-needed basis. His experience includes CIP management, coordination with City Departments, Utility Companies, Caltrans, other Regulatory Agencies, Developers, Consultants, Contractors, and overall management and coordination of a variety projects from design thru plan review and approvals and construction. He also served as Assistant Resident Engineer, Office Engineer and Assistant Project Inspector on a number of Construction Projects. He is well versed in Caltrans and Local Assistance Procedures in federally funded project management. Examples of his project experience includes:

- City of Palm Springs, Bogert Trail Bridge Widening Project (Federally Funded). Served as Office Engineer, Inspector. In the final 3 months of providing CM/Resident Engineer, Inspector, Office Engineer Services. The project is federally funded and being managed in compliance with Caltrans Local Assistance Procedures Manual.
- City of Palm Springs, Vista Chino/Farrell Drive Right Turn Addition and Signal Improvement Project (Federally Funded Served as Office Engineer, Inspector. In the final month of providing CM/Resident Engineer, Inspector, Office Engineer Services. The project is federally funded and being managed in compliance with Caltrans Local Assistance Procedures Manual.
- Washington Boulevard Widening and Reconstruction Project (Federally Funded), City of Commerce (\$30m). Currently providing CM/Resident Engineer, Inspector, Office Engineer Services. The project includes widening and reconstruction of 2.7 miles of Roadway.
- City of Temple City, Rosemead Boulevard Reconstruction Project (Federally Funded): Served as the primary Office Engineer for the Rosemead Boulevard Reconstruction Project. The project involved widening and reconstruction of approximately 2 miles of Rosemead Boulevard. Work also included pavement reconstruction, medians, landscape, ADA improvements, sidewalk, curb and gutter, street lights, pedestrian lights, traffic signals, bus shelters, street furniture, art work. Cost \$21m.
- City of Pomona/Caltrans, Rte 71/Mission Grade Separation Project (Federally Funded: Served as one of the Office Engineers for the State Route 71 and Mission Boulevard Grade Separation Project. The State Route 71/Mission Boulevard Interchange project involved removing the existing at-grade Mission Boulevard/State Route 71 intersection and constructing an interchange by grade separating Mission Boulevard over State Route 71. Cost \$40m.
- City of Moreno Valley, Street Improvements Project, Cactus Avenue between Lasselle Street and Nason Street and Along Nason Street between Cactus Avenue and Iris Avenue: Served as Staff Inspector as well as Office Engineer, provided Federal and Labor Compliance services and served as staff inspector to support the principal inspector. The project in general consists of the ultimate width street improvements along 1) Cactus Avenue between Lasselle Street and Nason Street and 2) Nason Street between Cactus Avenue and Iris Avenue. The funding for both projects is approximately \$20 Million including \$1 Million in anticipated State Local Partnership Program (SLPP) grant monies for the Cactus Avenue project.
- New Avenue, from North to South City Limit Reconstruction Project (Federally Funded), Alhambra: Served as Deputy Project Manager, Staff Inspector as well as Office Engineer, provided Federal and Labor Compliance services and served as staff inspector to support the principal inspector for this federally funded,



approx. \$1,300,000 project, which involved reconstruction, pavement overlay, medians, landscape, curb and gutter, sidewalk, traffic signals and other misc. improvements.

- Valley Boulevard, from Campbell to 710 Freeway Reconstruction Project (Federally Funded), Alhambra: Served as Deputy Project manager, Staff Inspector as well as Office Engineer, provided Federal and Labor Compliance services and served as staff inspector to support the principal inspector for this federally funded, approx. \$3,000,000 project, which involved reconstruction, pavement overlay, medians, landscape, curb and gutter, sidewalk, traffic signals and other misc. improvements.



EDWARD GANDARA, EIT, MS, Office Engineer, Support for RE, CM, Funding, Labor Compliance (*Bi-Lingual*)

Mr. Gandara has over 5 years of experience. He has been providing support services on various projects and various Cities under Transtech's Municipal Engineering Contracts.

He was one of the Construction Management and Inspection Team members for the Washington Boulevard Widening and Reconstruction Project in the City of Commerce. He served as the Office Engineer and assistant to the Construction Manager. Washington Boulevard Widening and Reconstruction Project is located in the City of Commerce. It as a Federally Funded Project, with total cost of \$38m. Transtech provided CM/CI/Resident Engineer, Inspector, Office Engineer Services. The project included widening and reconstruction of 2.7 miles of Roadway, Traffic Signals, Street Lighting, Landscape, Improvements at I-5 and at 710 Freeways ramps. The project was federally funded and was managed in compliance with Caltrans Local Assistance Procedures Manual. The project was also a Caltrans Oversight Project.

EDUCATION

- MS, Structural Engineering, USC
- BS, Civil Engineering, USC

REGISTRATION/CERTIFICATIONS

- EIT

HIGHLIGHTS

- Served as Office Engineer for federally and state funded project in compliance with Caltrans Local Assistance Procedures Manual (LAPM).
- As Office Engineer, assists Construction Managers, Resident Engineers and Project Managers on document control, RFI's, Submittals, CCOs, Invoices and project control and documentation.

Mr. Gandara also served as Office Engineer for City of Huntington Park Splash Park Project, City of Commerce Slauson Avenue ADA and Tree Replacement Project, 2016 City-wide Street Rehab Project.

Before joining Transtech, he worked at Redhill Group Inc., Irvine, CA as an Intern Engineer. He gathered information from customers using the public transit in the Bay Area that was analyzed to determine the best allocation of federal funds.

During his school years, he prepared several engineering projects, including:
Senior Design Project Jan 2012 - June 2012

Worked on two-part series involving the land development process, construction management, meeting city regulations, cost estimation, scheduling, designing, and working with practicing engineers on a concrete parking structure.

UCI Senior Multidisciplinary Design Project Oct 2011 - Dec 2011

Created a successful Site Planning Report for a North Irvine site in a 6 person, civil and environmental engineering team, which included permitting, entitlement, an environmental impact report, and cost estimation.

Research on Light Wood Frame Shear Walls Testing June 2010 - Dec 2010

Developed a research proposal with 4 student researchers with the help from faculty mentor, Dr. Ayman Mosallam to acquire the empirical data regarding the strength of shear walls under seismic loadings.

UCI Highway Design Project Oct 2010 - Dec 2010

Worked on a team of 6 student engineers to design and analyze a new highway in a theoretical location to accommodate traffic flows using AutoCAD Civil 3D.

He also worked on various program at the university:

University of California, Irvine; Department of Center of Educational Partnerships

Tutor at California Alliance for Minority Participation Sept 2012 - June 2013

Mentored underclassmen improve basic knowledge for challenging engineering classes which resulted in improved grades.



JEFFREY HIRSH, Sr. Construction Inspector

Jeffrey Hirsh has approximately 25 years of experience in general engineering/public works and building construction projects. He has worked in the capacity of foreman, site superintendent and project manager. In these capacities, he has been involved in a wide variety of private and public works construction projects in Type A (General Engineering) and Type B (Building) construction. He has knowledge of standards and procedures for public agencies, including the Green Book, Caltrans, and has extensive experience in traffic control, safety and OSHA compliance requirements.

Mr. Hirsh also has experience in inspecting federally funded projects to ensure compliance with the Caltrans Local Assistance Procedures Manual. He also has extensive experience in communicating/working with the public/adjacent property owners, and being proactive in dealing with complaints and comments and minimizing project impacts.

His Experience Includes:**HIGHLIGHTS**

- 30 years of experience in general engineering/public works and building construction projects.
- Worked as PW inspector for a number of agencies under Transtech Contracts.
- Experience includes all types of PW improvements, local roads, pavement rehabilitations, water, sewer, storm drain, traffic signals, striping, grading, utilities.

- During his employment with Transtech, he has inspected projects that included street, sidewalk, water, sewer, storm drain, park improvements.
- He also oversees traffic control and job site maintenance/NPDES/BMP measures on construction site.
- He was the on-site inspector for a major water main installation project in Commerce. Work was done during night time to avoid lane closures during day time on the major arterial where work was performed. The second phase of this project will involve extension of the new line thru Caltrans ROW (710 Freeway).
- He was the lead inspector for the Lugo Park Artificial Turf Soccer-Field and Park Project in the City of Cudahy, which included reclaimed water irrigation. The project was CDBG Federally Funded (\$1.6m)
- He also served as one of the Sr. PW Inspectors on several projects as part of Transtech's CM Team in the City of Commerce, where Transtech serves as the City's CIP Manager, including:
 - Washington Bl Widening and Reconstruction Project (\$30m, Federally Funded)
 - 2016 and 2017 City-Wide Annual Street Rehab Projects (\$6m)
 - Slauson Avenue Tree and SW Replacement Project (\$1.5m)
 - Metrolink Station Improvements (\$0.5m)

Jeffrey's prior experience includes:***2013-214, PSBI Parking Structure Construction***

- Sr. Superintendent Construction of a 6-level parking structure for the City of Alhambra.
- All budgetary and supervisory site management responsibilities.

1995-2013, Harwood Homes, Inc.

- Vice President - Construction/Forward Planning Managed 35 Development Projects - SFR/Multi-Unit/Commercial
- Raw land development through onsite construction, including final and post occupancy. Supervised all aspects of planning, development and construction processes.
- Responsible for construction of 2000+ single family homes.
- Responsible for construction of 850+ attached units.



- Successfully developed and completed multiple commercial project sites including strip centers and a large, automated car wash facility.
- Supervised 20+ Construction Superintendents.
- Managed bidding processes, procedures and estimation, including managing 5 Purchasing Managers/Agents.
- 20+ year track record of job site safety controls with zero significant job site accidents, and zero Cal-OSHA violations.
- Compliance Management for all codes, conditions and ordinances.
- Implemented industry standard customer service system.
- Functioned as forward planning liaison to Civil Engineering Firms.
- Served on Project Evaluation/Selection Committee for 15 years.

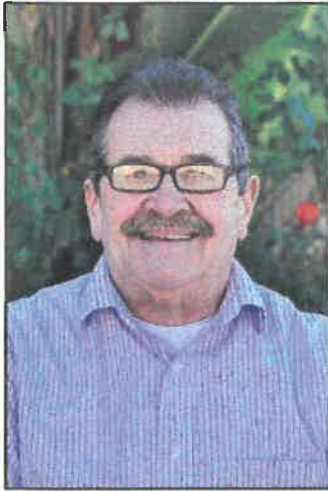
1992-1995, Overland Company

- Site Superintendent – SFR Tract Home Development

1985-1992, Cambridge Development

- Customer Service Manager – Tract Home Development
- Site Superintendent/Assistant Superintendent



MARIO MAGLIOCCHETTI, Sr. Construction Inspector

Mr. Magliocchetti has approximately 30 years of experience in general engineering/public works and building construction projects. He has worked in the capacity of foreman, site superintendent and project manager. In these capacities, he has been responsible for more than \$500 million worth of private and public works construction projects in Type A and Type B construction. He has knowledge of standards and procedures for many public agencies, including the Green Book, and has extensive experience in traffic control, safety and OSHA compliance requirements. He has participated on numerous multi-disciplinary teams dealing with the architecture and engineering for urban and rural development, infrastructure, and public works projects. Mr. Magliocchetti also has experience in inspecting federally funded projects to ensure compliance with the Caltrans Local Assistance Procedures Manual. He also has extensive experience in communicating/working with the public/adjacent property owners, and being proactive in dealing with complaints and comments and minimizing project impacts. Some of the major projects where Mr. Magliocchetti has served as Public Works Inspector are as follows:

HIGHLIGHTS

- 30 years of experience in general engineering/public works and building construction projects.
- Worked as PW inspector for a number of agencies under Transtech City Engineer Contracts.
- Extensive experience in NPDES.
- Inspected numerous federally funded projects in compliance with Local Assistance Procedures Manual, as well as projects under Caltrans' jurisdiction.
- Experience includes all types of PW improvements, local roads, pavement rehabilitations, water, sewer, storm drain, traffic signals, striping, grading, utilities.
- **City of San Bernardino, Contract Public Works Inspector:** Provided inspections as contract City Inspector for FY 2015/16 Street Rehab and Sidewalk ADA Improvements (\$4m construction).
- **City of Temple City, Contract Public Works Inspector:** Provided inspections as contract City Inspector for various projects.
- **City of Commerce, SR25, Bus Shelter and Sidewalk and ADA Improvements Project:** The project involved installation/reconstruction of Bus Shelters, sidewalks and ADA Ramps under FTA Federally Funded Program. Construction Cost was \$1.5m.
- **City of La Habra Heights, Pavement Rehab Project:** The project involved pavement rehabilitation (overlay, slurry seal, R&R) on various streets. Construction cost was \$2m.
- **City of Alhambra-Fremont Avenue and Valley Boulevard roadway, median and landscape improvements:** These projects involved construction of roadway, raised median, striping, traffic signal loops, sidewalk, planters, landscape and irrigation improvements. Total construction cost for both projects was \$13m.
- **City of Commerce-Tubeway Street Reconstruction:** This project involved construction of roadway, striping, traffic signal loops, and sidewalk improvements. Construction cost was \$1m.
- **City of Hawthorne-Rosecrans, Hindrey, 405 Ramp:** This project involved roadway widening and reconstruction, traffic signals, utility undergrounding, water, sewer, electrical, raised median, sidewalk, planters, landscape and irrigation improvements. The project was coordinated with Caltrans for improvements at the 405/Hindrey ramps. Coordination with local businesses has been imperative to maintain a positive image for the City as construction took place in a very busy commercial district. Construction cost was \$3m.
- **City of Alhambra-Polo Club Parking Lot:** The project included extensive grading and over excavation, demolition of existing buildings, underground electrical system, pavement, planters, walls, landscaping, irrigation, lighting and various concrete improvements. Construction cost was \$1m.
- **City of Alhambra Redevelopment Agency-Main Street Facade Project:** The project involved construction of seismic upgrade and new facade improvements on a City block under the CDBG funding program. Construction cost was \$4m.



JEFFREY KAO, PE, CASp, CBO, Sr. Engineer, ADA, Evaluations/Inspections Support Bi-Linqual (Chinese)

Mr. Kao has 20 years of experience and has been working at Transtech as Deputy Building Official, Senior Plans Examiner, On-Site Over the Counter Plans Examiner and performed plan checks for a variety of residential and commercial projects in Cities of Alhambra, South Pasadena and La Habra Heights.

Mr. Kao has broad knowledge of building and safety operations, including working in the capacity of Deputy Building Official and Plans Examiner.

As Plans Examiner, he is responsible for examination and approval of architectural and structural plans submitted to municipalities for a wide variety of projects ranging from small residential additions to large, multistory commercial and industrial facilities.

As Deputy Building Official, he provides necessary code interpretations, and coordinates with agency staff and departments, and applicants on building and safety related issues. He also provides over the counter plan check as Deputy Building Official/Plans Examiner.

EDUCATION

- UCLA, BS and MS in Civil Engineering (Structural and Earthquake

REGISTRATION

- California Registered Civil Engineer

CERTIFICATIONS

- Certified Building Official
- California Building Plans Examiner
- CalGreen Inspector
- CalGreen Plans Examiner
- Mechanical Plans Examiner
- Plumbing Plans Examiner
- Building Inspector

HIGHLIGHTS

- Chinese Cantonese and Mandarin Speaker
- Extensive experience in Structural Plan Check
- Experience includes working as structural designer at a structural firm.

His past experience includes working as a structural engineer for 4 years at a structural design firm. He was involved in various projects, including Mid-rise Steel Commercial Buildings, Steel Industrial High Bay Facilities, Wood Framed Public/Private Schools and Education Centers, Reinforced Concrete Masonry Studios and Auditoriums and Spreading Footing, May, Pile Foundation Design. His diversified experience gives him an excellent knowledge and understandings of "both sides of the counter."

Mr. Kao has extensive experience in Building Codes, plan check including building, grading and NPDES plan reviews, code interpretations and resolving code related construction and plan check problems on a broad range of residential and commercial projects.



MELISSA DEMIRCI, Associate Engineer, Public Relations Support**EDUCATION**

- BS, Civil Engineering, Cal Poly Pomona 2010

HIGHLIGHTS

- Serves as a Traffic Analysts and Associate Engineer for several Traffic Authorities and Traffic Commissions.
- Served as assisting to City Engineer and Public Works Director preparing budgeting, contract management, staff report writing, and misc. items.
- Completed Caltrans Resident Engineer Academy, very familiar with the management and administration of federally funded projects in compliance with Caltrans Local Assistance Procedures Manual (LAPM).
- Served as Office Engineer for Rte 71/Mission Grade Separation Project (Federally Funded, \$40M project).
- Served as Office Engineer for Rosemead Boulevard Complete Streets Project (Federally and State Funded, \$20M project).
- Prior experience includes working as Civil Engineering Intern for 3 years at the City of Los Angeles.

Ms. Demirci has approximately 8 years of experience in Project Management, Transportation and Traffic Engineering, and Grant Writing. She has her BS Degree in Civil Engineering from Cal Poly Pomona. She is well versed in Caltrans and Local Assistance construction filing and document system. She served as Office Engineer responsible for all Caltrans documentation as well as Community Outreach for the Rte 71/Mission Grade Separation Project (Federally Funded, \$40m), Washington Bl Widening and Reconstruction Project (Federally Funded, \$38m), and the Bogert Trail Bridge Widening Project (\$5M). Her rolls included all community correspondence, community meeting presentations and organization, public notices, etc. Ms. Demirci also prepares grant applications and helped facilitate over \$15 million in funding for clients' public works and transportation improvement projects. She has worked in the Public Works Department and assists in the preparation of staff reports, contract administration, RFP preparation, CIP Budget preparation, bid analysis, budgeting, traffic safety and calming studies, stop and signal warrants/studies, traffic impact studies, traffic calming reports, and responding to requests from Public and City Officials. She also prepares grant applications for transportation related projects including detailed figures, diagrams, and exhibits. Ms. Demirci regularly attends Traffic Commission and City Council Meetings presenting on various items. Her prior experience includes working at the City of Los Angeles, Mayor's Office Energy and Environment Team while completing her civil engineering degree at Cal Poly Pomona.

Examples of her project experience includes:

Traffic and Transportation Engineering Experience (2010-present)

Temple City, Alhambra, Rosemead, Commerce, Monterey Park, Huntington Park, Cudahy

- **Traffic Commission:** As part of Transtech's Municipal Services Contract, Ms. Demirci also assists in the preparation of traffic safety and calming studies, stop and signal warrants/studies, traffic impact studies, calming reports, responding to requests from Public and City Officials. She also attends Traffic Commission meetings and assists in presentations of reports.
- **Focused Parking Studies for Various Cities and Developers:** This task included conducting existing inventory counts in the field and assisting cities to come up with solutions to parking demands.
- **Engineering and Radar Speed Survey for Various Cities:** This task included the radar field survey, field observations, and calculation of 85th percentile speeds, preparation of city maps and preparation of report. Various Cities some of which include: City of Alhambra and City of Temple City
- **School Site Review:** This task includes the observation and analysis of school sites as related to traffic and safety. This includes suggesting drop off/pick up procedures for parents and buses, driveway assessment and signage.
- **Safe Route to School Program:** This task includes field review of existing signing, striping, school drop off, pick up, school crosswalks, sidewalks, crossing guard locations and the identification of future measures that will improve the traffic safety. Sample programs were conducted for: City of Alhambra – City-wide as needed; City of Temple City – City-wide as needed; City of Huntington Park – City-wide as needed



Public Works Department Experience (2010-present): As part of Transtech's Municipal Services, Ms. Demirci provided services to various client cities as assistant to the Public Works Director and City Engineer. Her tasks include:

- Preparation of CIP Budget (5-year CIP budget \$100M+) and attend and participate in meetings and conferences with City boards and commissions, City departments, public officials, professional organizations and contractors regarding requirements for public works projects, land development/subdivision projects and other matters relating to areas of assigned responsibilities. As well as prepare Staff Reports and Presentations for Council Meetings, Commission Meetings, and Ad-Hoc Committees as well as a variety of reports, correspondence and special studies.

Grant Writing Experience (2010-present): Ms. Demirci also prepares grant applications for transportation projects, awarded grants she worked on include:

- **City of Rosemead:** 2015 Metro (MTA) Call for Projects, Garvey Avenue Regional Access & Capacity Improvement Project, Award Amount: \$2,315,305
- **City of Rosemead:** 2015 Highway Safety Improvement Project (HSIP) Cycle 7, Installation of HAWK system, Award Amount: \$241,300
- **City of Monterey Park:** 2015 Metro (MTA) Call for Projects, Monterey Pass Road Complete Streets Bike Project, Award Amount: \$1,993,627
- **City of Alhambra:** 2013 Metro (MTA) Call for Projects, Alhambra Ped Improvement/Walking Viability Project on Valley, Award Amount: \$323,427
- **City of San Gabriel:** 2015 Highway Safety Improvement Project (HSIP) Cycle 7, Signal Safety Enhancements Project, Award Amount: \$569,800
- **City of San Gabriel:** 2016 Highway Safety Improvement Project (HSIP) Cycle 8, Install overhead flashing beacon, Award Amount: \$270,200
- **City of Huntington Park:** 2015 Active Transportation Program (ATP) Cycle III, Citywide Uncontrolled Crosswalk Pedestrian Safety Enhancement Project, Award Amount: \$1,757,000
- **City of Huntington Park:** 2016 Active Transportation Program (ATP) Cycle II, Uncontrolled Crosswalk SRTS Ped Safety Project, Award Amount: \$1,032,000
- **City of Cudahy:** 2015 Active Transportation Program (ATP) Cycle II, Wilcox Avenue Complete Streets and SRTS Project, Award Amount: \$1,344,000
- **City of Cudahy:** 2015 Metro (MTA) Call for Projects, Cudahy City Wide Complete Streets Improvement Project, Award Amount: \$2,134,449
- **City of Cudahy:** 2015 Highway Safety Improvement Project (HSIP) Cycle 7, Salt Lake Ave Safety Project, Award Amount: \$363,180
- **City of Cudahy:** 2016 Active Transportation Program (ATP) Cycle III, Atlantic Ave Bicycle and Ped Enhancement Project, Award Amount: \$1,784,000
- **City of Pico Rivera:** 2016 Highway Safety Improvement Project (HSIP) Cycle 8, Sign Improvements, Award Amount: \$696,300
- **City of Commerce:** 2013 Metro (MTA) Call for Projects, Commerce Goods Movement Atlantic Blvd: Washington to Como, Award Amount: \$631,137
- **City of Commerce:** 2016-17 Rubberized Pavement Grant Program (Cal Recycle), Award Amount: \$281,400





GEO-ADVANTEC; www.geoadvantec.com; Materials Testing and Inspection Support

GEO-ADVANTEC, INC.; www.geoadvantec.com; Soils/Geotechnical, Materials Testing/Inspection Support

Geo-Advantec, Inc. offers comprehensive services in various areas from site feasibility evaluation through project completion for a wide range of projects. Our highly-qualified team of professionals has extensive experiences in performing variety of complex geotechnical engineering projects and providing innovative solutions for complex projects. In addition, our diverse team of field technicians and inspectors with related technical backgrounds, education, and accreditations are well experienced to support the construction course of projects. Geo-Advantec, Inc. is vastly specialized to provide the following services:

- Geotechnical Engineering
- Engineering Geology
- Geotechnical Earthquake Engineering
- Geotechnical Instrumentation
- Pavement Engineering
- Forensic Geotechnical Engineering
- Grading Monitoring and Field Testing
- Soils & Materials Laboratory Testing
- Special Inspection Services

FEW EXAMPLES OF PROJECTS REPRESENTATIVE OF SIMILAR EXPERIENCE

City of Commerce, Washington Boulevard Rehabilitation (2015): Washington Boulevard is a major east-west corridor that serves as one of the significant connectors between the I-710 and I-5 Freeways. The job was a reconstruction and widening project covering a 2.7-mile segment of Washington Boulevard between Indiana Street to the Santa Ana (I-5) Freeway. Geo-Advantec was selected as the Caltrans certified laboratory and provided field inspection/testing and laboratory testing in compliance with Caltrans Local Assistance Manual. Our team performed testing and inspection on flexible and rigid pavements per the project/Caltrans requirements. We also measured the compressive and flexural strengths of different types of concrete pavement components.

City of Temple City, Rosemead Boulevard Safety Enhancement and Beautification (2012-2014): The project consisted of streetscape enhancements on Rosemead Boulevard to improve safety and aesthetics within the Temple City right-of-way. The proposed improvement was over approximately 2 miles of road, from the southern city limit with the City of Rosemead at the UPRR railroad bridge to the Northern city limit with the County of Los Angeles at Callita Street. Geo-Advantec provided the resident inspector of record services for the project. The duration of the project was about 16 months and the construction cost was about \$18M.

Los Angeles Department of Water and Power (LADWP), Trunk Line South, Unit 4, Phase 2 (2016): Geo-Advantec, Inc. provided geotechnical instrumentation and monitoring for the City of Los Angeles Trunk Line South, Unit 4, Phase 2. The project purpose was studying and monitoring the displacement of the deep tunnel shafts' walls and settlement of the underground tunnel due to construction of a new sewer line. To monitor the movement and settlement during the construction, GAI installed four inclinometers, each between 25 to 40 feet deep, and six vertical/deep extensometers of about 70 feet deep. The reports of instrumentation readings were prepared and provided to the project team on a daily basis.

City of Pomona, Storm Water Disposal at Gary Avenue (2015): The City intended to design and construct an on-site storm-water disposal system. The system would collect and infiltrate Gary Avenue runoff into the ground. Geo-Advantec scope of work included conducting several exploratory borings at the designated locations, conducting SPT and sampling at 3 feet intervals for the substrate profile determination, collecting disturbed/bulk samples of the encountered subsurface material, conducting three percolation tests at a depth targeting the most permeable layer, performing laboratory testing on the selected soils samples, reviewing the field data and the laboratory test results, performing engineering analyses, and preparing a final geotechnical evaluation report that included results of our field and laboratory testing and determined infiltration rates at the site. Our team completed the project in less than two weeks.





SHAWN ARIANNIA, Ph.D., P.E, G.E
PRINCIPAL GEOTECHNICAL ENGINEER

EDUCATION

- B.S., Civil Engineering (1982), University of Tehran
- M.S., Civil Engineering (1985), University of Tehran
- Ph.D., Geotechnical Engineering, University of California, Los Angeles (UCLA)

REGISTRATION

- Registered Geotechnical Engineer: California, #2824
- Professional Civil Engineer: California, #65642
- Past President, ASCE Inland Empire Geotechnical Committee

EXPERIENCE HIGHLIGHTS

- 32 years of experience in Civil Engineering and Geotechnical Engineering Projects for Public and Private Clients
- Served as the Geotechnical Engineer of Record and completed more than 200 geotechnical study for DSA projects in California, including schools and community colleges
- Saved Hundreds of Thousand Dollars for Clients by Providing High Quality yet economic alternate geotechnical engineering Solutions
- High Extent of familiarity with all the tasks involved in transportation projects
- Vast knowledge and experience in Geotechnical Seismic Rehabilitation Study and Site Specific Evaluations
- Extensive Experience in Pavement design, retrofit and management projects with various cities in Southern California
- Geotechnical engineering for various transportation, bridge, parking structures and commercial buildings

Dr. Ariannia has more than 32 years of experience in design, supervision and technical management for projects in the structural and geotechnical fields. He possesses extensive and responsible experience in design, supervision, and technical management of major projects in both structural and geotechnical fields. He has been involved in major projects such as transportation/transit, highway and railroad bridges, tunnels, power plants, cooling towers, silos, and medium to high-rise multi story structures. The breadth of his experience includes geotechnical analysis, field and laboratory test management, slope stability and liquefaction analysis, seismic hazard evaluation, pile and earth retaining structures design, design and implementation of soils and slope stabilization, repair and retrofit methods relevant to soils, foundation, and structural behavior for different types of structures. During last two decades, he has actively practiced geotechnical engineering and consulting in southern California and has been the Geotechnical Engineer of Record for numerous road, highway and transportation projects, educational projects, multi-story buildings and parking structures with deep excavations and multiple subterranean floors subject to buoyancy.

He served as the principal geotechnical engineer for various types of projects including:

- Transportation, Transit, Pavement Engineering, Bridges, and Parking Structures
- Aviation, Ports and Harbors
- Public works, Cities, and Municipalities
- Schools and Educational Facilities
- Hospitals and Medical Facilities

TRANSIT AND TRANSPORTATION EXPERIENCES

- Principal geotechnical engineer of Los Angeles County Metropolitan Transportation Authority (Metro) project, PA/ED for I-605/SR-60 interchange improvement, County of Los Angeles
- Principal geotechnical engineer of Los Angeles County Metropolitan Transportation Authority (Metro) project, PA/ED and PS&E phases for I-605/SR-91 to South Street, County of Los Angeles
- Principal geotechnical engineer of Los Angeles County Metropolitan Transportation Authority (Metro) project, Preliminary Geotechnical Engineering, Initial Site Assessment (ISA), and Phase II Environmental study for Lakewood and Alondra Intersections (Metro Hotspot Project), City of Bellflower
- Principal in charge of the geotechnical instrumentation and monitoring for Trunk Line South, Unit 4, Phase 2 for Los Angeles Department of Water and power (LADWP) and instrumentation of deep shafts of cut and cover
- Project Manager, geotechnical engineer, and supervisor of the field geotechnical monitoring and testing for the construction of a new railroad (Exposition Light Rail) for the County of Los Angeles, Metropolitan Transit Authority (MTA), from the City of Los Angeles to Culver City
- Geotechnical Engineer and project manager of railroad widening at El Cajon Pass. He supervised the team of field geotechnical personnel providing testing and monitoring services during the railroad widening at El Cajon Pass
- Project manager and supervisor of the field geotechnical monitoring and testing team for Amtrak progressive maintenance facility construction.





- Principal Geotechnical engineer in charge of soils and foundation investigation for bridges within an about 100 miles, double-track Bafgh-Bandar Abbas railroad project in Iran
- Principal geotechnical engineer of City of Long Beach Geotechnical, Geologic, and Geohazard Study for Queen Mary Waterfront Development at Port of Long Beach, City of Long Beach
- Principal geotechnical engineer for Caltrans, Cenda Bridge (Br. No. 54-1308L) on I-15 Replacement Project
- Principal geotechnical engineer of Caltrans Schuyler Heim Bridge piers in Wilmington, CA Monitoring on Core sampling and logging for large diameter piles.
- Principal geotechnical engineer and reviewer of geotechnical constructability review project for the Port of Los Angeles developments including C Street/I-110 Freeway Access Ramp Improvements, Harry Bridges Boulevard Undercrossing, Bridge No. 53-3048S and retaining walls 318 and 320
- Principal geotechnical engineer/Pavement Consultant for Washington Boulevard rehabilitation project in the city of Commerce
- Principal geotechnical engineer for the pavement rehabilitation of Eastern Avenue in the city of Commerce
- Principal geotechnical engineer of citywide pavement study for the city of Pomona
- Principal geotechnical engineer for the city of Torrance transit park and ride regional terminal, Phase I, rough grading
- Principal geotechnical engineer of geotechnical field engineering and testing for the Los Angeles International Airport (LAX)
- Project manager and Geotechnical supervisor of the field testing and inspection as well as laboratory testing for Del Amo boulevard project of the city of Torrance
- Project manager and supervisor of the field testing and inspection as well as laboratory testing for pavement rehabilitation project of the city of La Mirada
- Geotechnical Engineer in charge of field monitoring and testing for capacity assessment and PDA/CAPWAP analysis review on piles for San Ysidro Border Station bridge, San Diego, CA
- Geotechnical engineer and supervisor of field soils monitoring and lab testing team for the widening of the Garden Grove Freeway (State Route 22)
- Principal geotechnical engineer for the West Los Angeles College new half-mile road, Second Access Road, connecting Jefferson Blvd. to Sophomore Drive.

Forensic Engineering/Peer Review

- Geotechnical Engineer for Port of Los Angeles: The Project involved performing a geotechnical constructability review on the developed documents for C Street/I-110 Freeway Access Ramp Improvements, Harry Bridges Boulevard Undercrossing, Bridge No. 53-3048S and retaining walls 318 and 320
- Forensic Engineering, Site Specific seismic evaluation and Expert Witness Services for 6-story Hume Apartment Building, Ontario, Canada
- Geotechnical Peer Review for the City of South Pasadena
- Geotechnical Peer Review for the City of Azusa
- Various geotechnical forensic projects within Southern California





4. SIMILAR PROJECTS AND REFERENCES

SIMILAR PROJECT EXPERIENCE:**Construction Management Services (Infrastructure/Roadway-Type A Projects) (Partial List)**

Washington Boulevard Widening and Reconstruction Project (\$30M): Transtech provided CM/CI/Resident Engineer, Inspector, Office Engineer Services. The project included widening and reconstruction of 2.7 miles of Roadway, Traffic Signals, Street Lighting, Landscape, Improvements at I-5 and at 710 Freeways ramps. The project was federally funded and was managed in compliance with Caltrans Local Assistance Procedures Manual. The project was also a Caltrans Oversight Project.



AWARD: This project was recognized as one of the project of the years as part of the 2017 American Public Works Association (APWA) BEST Award, in the category of Transportation Projects.



Rosemead Boulevard Improvements Project (\$20M): Located in the City of Temple City, this was a Federally Funded project. Transtech provided construction management, resident engineer, inspection, labor compliance and office engineer services. The project included protected bike lanes, widening and reconstruction of 2 miles of roadway (including approx. 6,000 tons rubberized AC overlay).



Rte 71/Mission Bl Grade Separation Project (\$40M): This project was a Federally Funded project located the City of Pomona and included construction of a bridge/grade separation. Transtech provided construction management, resident engineer, inspection, labor compliance and office engineer services. Caltrans was the oversight/jurisdictional Agency.



26th Street Rehab and Metrolink Station (\$1M): This project was Federally Funded in the City of Commerce and included rehabilitation of 26th Street, and Metrolink Station parking lot rehab, station platform improvements, landscape and lighting. Transtech prepared the PS&E, as well as provided construction management, resident engineer, inspection, labor compliance and office engineer services.



ATP Citywide Crosswalk and Pedestrian Safety Improvement Project (\$1.2M): Located in the City of Cudahy, this project included safe routes to school pedestrian safety improvements near schools and pedestrian activity centers. Transtech prepared the PS&E, as well as provided construction management, resident engineer, inspection, labor compliance and office engineer services.





Eastern Avenue Rehab Project (\$1.5M): Located in the City of Commerce, this project was funded thru City's Measure AA Funds. The project involved Full Depth Reclaimed Pavement Rehabilitation. Transtech prepared the PS&E, as well as provided construction management, resident engineer, inspection, labor compliance and office engineer services.



AWARD: This project was recognized as one of the project of the year awards as part of the 2017 Outstanding Local Streets and Roads Project Award Program in the Category of Roads for Efficient & Sustainable Road Maintenance, Construction & Reconstruction Projects.



El Monte, Temple City Blvd, and Various Citywide Locations HSIP Projects (\$1.8M): Located in the City of Temple City, this project was a Federally Funded through Highway Safety Improvement Project (HSIP) program. It included asphalt roadway resurfacing, markings & striping, traffic safety improvements such as updated traffic signal heads and speed radar feedback signs, and updated street signage. Transtech prepared the PS&E, as well as provided construction management, resident engineer, inspection, labor compliance and office engineer services.



Middleton Street Elementary School Safe Routes to School Improvements Project (\$500K): Located in the City of Huntington Park, this project was part of the Safe Route to School program and included pedestrian safety improvements, bulb outs, ADA compliant PCC curb ramps, sidewalk improvements, updated signage, striping and markings. Transtech prepared the PS&E, as well as provided construction management, resident engineer, inspection, labor compliance and office engineer services.



Cactus Avenue and Nason Street Improvements and 135' Span Bridge Project (\$21M): This project was part of the State Local Partnership Program SLPP Grant in the City of Moreno Valley (\$21M). Transtech provided construction management, resident engineer, inspection, and office engineer services.



AWARD: This project was recognized with a project achievement award by the Construction Management Association of America (CMAA) for Construction Management Services under the Public Works Category for \$11M-\$50M ranged projects.



Temple City Citywide Pavement Rehabilitation Project (\$900K): Located in the City of Temple City, this project included citywide construction of slurry seal to various streets. Transtech prepared the PS&E, as well as provided construction management, resident engineer, inspection, labor compliance and office engineer services.





Slauson Avenue ADA Improvements and Tree Replacement Project (\$1.5M): Located in the City of Commerce, this project was funded thru City's Measure AA Funds. The project included removal of 149 overgrown Ficus trees that displaced the sidewalk in some areas up to 2 feet high and replaced them with new ADA compliant sidewalk and planted 433 drought tolerant trees in their place. Transtech prepared the PS&E, as well as provided construction management, resident engineer, inspection, labor compliance and office engineer services.



Parking Lot Improvements Projects (\$550K): Located in the City of Temple City, this project included new parking lot signage, asphalt resurfacing, construction of trellis, new lighting, electrical vehicle charging station infrastructure, landscaping, and drainage. Transtech provided design, construction management, and inspection services.



Bogert Trail Bridge Widening Project (\$5M): Located in the City of Palm Springs, this project was a Federally Funded project. Transtech provided construction management, resident engineer, inspection, labor compliance and office engineer services. The project involved bridge widening, retrofit, and beautification elements.

REFERENCES:

Client Name: City of Alhambra

- Marc Castagnola, Development Services Director, 626-570-5041; E: mcastagnola@cityofalhabra.org

Client Name: City of Temple City

- Michael Forbes, Community Development Director; T: 626-285-2171; E: mforbes@templecity.us

Client Name: City of South El Monte

- Rene Salas, Public Works Director; T: (626) 579-6540 Ext. 3040; E: rsalas@soelmonte.org

Client Name: City of Monterey Park

- Ron Bow, City Manager; T: 626-307-1320; E: RBow@MontereyPark.ca.gov

Client Name: City of Cudahy

- Jose Pulido, City Manager; T: 323-282-5582; E: jpulido@cityofcudahyca.gov

Client Name: City of Huntington Park

- Daniel Hernandez, Public Works Director; T: 323-584-6320; E: DHernandez@hpcg.gov





APPENDIX - CONTRACT

If selected by the City, we request for the City Attorney and our legal representative to work together on the following items for a mutually agreed upon language.

CONTRACTOR's cost of, or time required for performance of any part of the work, CONTRACTOR shall not be excused from any schedule completion date, and shall proceed with all work to be performed under the Contract. CONTRACTOR shall retain any and all rights which pertain to the resolution of disputes and protests between the parties.

ARTICLE VII. INDEMNIFICATION.

CONTRACTOR shall ~~assume the defense of and~~ indemnify and save harmless the CITY, its elective and appointive boards, officers, agents and employees, from all claims, loss, damage, injury and liability of every kind, nature and description, ~~directly or indirectly arising from the performance of CONTRACTOR's work under this Contract; and from any and all claims, loss, damage, injury and liability, howsoever the same may be caused, resulting directly or indirectly from the nature of the work covered by the Contract;~~ ^{to the extent of operations of negligent or negligent} provided:

- (a) That CITY does not, and shall not, waive any rights against CONTRACTOR which it may have by reason of the aforesaid hold-harmless agreement because of the deposit with CITY by CONTRACTOR, of any of the insurance policies hereinafter described herein.
- (b) That the aforesaid hold-harmless agreement by CONTRACTOR shall apply to all damages ~~and claims for damages of every kind suffered, or alleged to have been suffered,~~ ^{or negligence} by reason of any of the aforesaid operations of CONTRACTOR or any subcontractor, regardless of whether or not such insurance policies shall have been determined to be applicable to any of such damages or claims for damages.

ARTICLE VIII. PERFORMANCE BOND.

~~CONTRACTOR, before commencing said PROJECT, shall furnish and file with CITY, a performance bond, or bonds in the sum of one hundred percent (100%) of the Contract price thereof conditioned upon the faithful performance of this Contract and upon the payment of all labor and materials furnished in connection with this Contract.~~

ARTICLE IX. INSURANCE REQUIREMENTS.

Prior to commencing work hereunder, CONTRACTOR shall provide the CITY with proof of insurance naming the CITY and each of its directors, officers, agents, and employees as additional-named insureds on a policy or policies of insurance providing and maintaining the coverages set forth in the Insurance Schedule attached hereto as Exhibit A. CITY shall have the right to hold the policies and policy renewals, and CONTRACTOR shall promptly furnish to CITY all renewal notices and all receipts of paid premiums. In CITY may make proof of loss if not made promptly by CONTRACTOR.

ARTICLE X. LIQUIDATED DAMAGES.

[Liquidated damages are uninsurable]

See Section 6-9 Liquidated Damages of the General Provisions



ARTICLE XV. ATTORNEY'S FEES.

If either party to this Contract is required to initiate or defend, or is made a party to, any action or proceeding in any way connected with this agreement, the party prevailing in the final judgment in such action or proceeding, ~~in addition to any other relief~~ ^{as part of total} which may be granted, shall be entitled to reasonable attorney's fees and costs. Attorney's fees shall include reasonable costs for investigating such action.

IN WITNESS WHEREOF the parties hereto have caused this Contract to be executed on the date first above written by their respective officers duly authorized in that behalf.

1. Comprehensive General Liability and Automobile Liability Insurance Coverage.

CONTRACTOR shall carry and maintain Comprehensive General Liability and Automobile Liability Insurance which provides the following:

Minimum coverage: Bodily injury limits of \$2,000,000 for each person and \$2,000,000 for each occurrence; property damage limits of \$2,000,000 for each occurrence, \$5,000,000 aggregate.

Products/Completed Operations Hazard Insurance in an amount of not less than FIVE MILLION DOLLARS (\$5,000,000);

A combined single limit policy with aggregate limits in an amount of not less than Five MILLION DOLLARS (\$5,000,000) shall be considered equivalent to the said required minimum limits set forth herein above.

If a Commercial General Liability Insurance form or other form with a general aggregate limit is used, either the general aggregate limit shall apply separately to the work to be performed under this Contract or the general aggregate limit shall be at least twice the required occurrence limit. Such coverage shall include but shall not be limited to, protection against claims arising from bodily and personal injury, including death resulting therefrom, and damage to property resulting from activities contemplated under this Contract, including the use of owned and non-owned real property and automobiles. Insurance coverage shall not be subject to any type of ~~pollution exclusion or~~ owned property exclusions.

4. Additional Insureds.

The CITY, its officers, agents and employees must be named as additional insureds or as additional loss payees in all insurance policies ^(except Professional Liability and Workers' Compensation) required by this Contract. An endorsement to this effect shall be delivered to CITY prior to the commencement of any work. Satisfaction of any deductible requirement shall be the responsibility of CONTRACTOR. ^(General Liability and Automobile Liability) Such insurance shall be primary and noncontributory with any other insurance maintained by the CITY.

5. Notice of Cancellation.

CONTRACTOR agrees to oblige its insurance agent or broker and insures to provide CITY with a thirty (30) day notice of cancellation (except for nonpayment for which a ten (10) day notice is required) or nonrenewal of coverage for each required coverage.

6. Severability Clause.

^(except Professional Liability and Workers' Compensation) Each of the policies of insurance shall contain a clause substantially as follows:

The insurance afforded by this policy applies separately to each insured against whom a claim or suit is made or suit is brought, except with respect to the limit of the insurer's liability.

