

# ATLANTIC BLVD. MEDIANS

WASHINGTON BLVD. TO COMO ST., COMMERCE, CA

NEW MEDIAN LANDSCAPE IMPROVEMENTS  
10 JULY 2018

## GENERAL NOTES -

### SCOPE OF WORK

ALL WORK SHALL COMPLY WITH ALL CITY STANDARDS. THE WORK SHALL INCLUDE ALL LABOR, MATERIALS, EQUIPMENT AND INCIDENTALS NECESSARY FOR THE INSTALLATION OF ALL WORK INDICATED IN THESE PLANS AND THE SPECIFICATIONS. CONTRACTOR SHALL VERIFY SPECIFIC CONDITIONS OF THE WORK TO BE PERFORMED WITH THE INVITATION TO BID.

### QUALITY OF MATERIALS

MATERIALS SPECIFIED IN THE PLANS AND SPECIFICATIONS SHALL PREVAIL WHEN OF A HIGHER STANDARD THAN THOSE REQUIRED TO MEET STATE AND LOCAL CODES.

### PLAN BACKGROUND

THESE PLANS ARE BASED UPON ELECTRONIC FILE SITE INFORMATION PROVIDED BY OTHERS. CONTRACTOR SHALL VERIFY SITE INFORMATION IN THE FIELD. LOST WEST HAS PREPARED THESE PLANS AND SPECIFICATIONS AS PROJECT LANDSCAPE ARCHITECT. LOST WEST SHALL NOT BE RESPONSIBLE FOR ANY WORK WHICH IS NOT EXPLICITLY DETAILED IN THESE PLANS, AND IS NOT RESPONSIBLE FOR THE WORK OF ANY OTHER COMPANY OR PERSONS PROVIDING SERVICES ON THIS PROJECT EITHER IN THE PAST OR IN THE FUTURE. THE CONTRACTOR SHALL BE SOLELY RESPONSIBLE FOR DETERMINING THE METHOD AND MEANS OF CONSTRUCTION.

### CHANGES TO PLANS

THE DESIGNS AND TECHNICAL INFORMATION PRESENTED IN THESE PLANS AND SPECIFICATIONS ARE THE PROPERTY OF LOST WEST. CHANGES WITHOUT THE EXPRESSED WRITTEN CONSENT OF LOST WEST ARE PROHIBITED AND WOULD RELIEVE LOST WEST OF ALL RESPONSIBILITY AS TO EVENTUAL PROJECT OUTCOME.

### EXISTING SITE CONDITIONS

CONTRACTOR SHALL BE RESPONSIBLE FOR CONTACTING UNDERGROUND SERVICE ALERT FOR THE MARK-OUT OF UTILITIES PRIOR TO THE COMMENCEMENT OF ANY WORK RELATED TO THESE PLANS.

CONTRACTOR SHALL VERIFY THE LOCATION OF ALL STRUCTURES ABOVE AND BELOW GROUND WITHIN AND ADJACENT TO THE PROJECT SITE PRIOR TO AND DURING THE COURSE OF WORK. CONTRACTOR SHALL INFORM OWNER AND LOST WEST IMMEDIATELY SHOULD DISCREPANCIES BETWEEN THE PLANS AND ACTUAL SITE CONDITIONS BE DISCOVERED WHICH HAVE A NEGATIVE EFFECT ON THE DESIGN OR ITS IMPLEMENTATION.

### JOB-SITE CONDITIONS

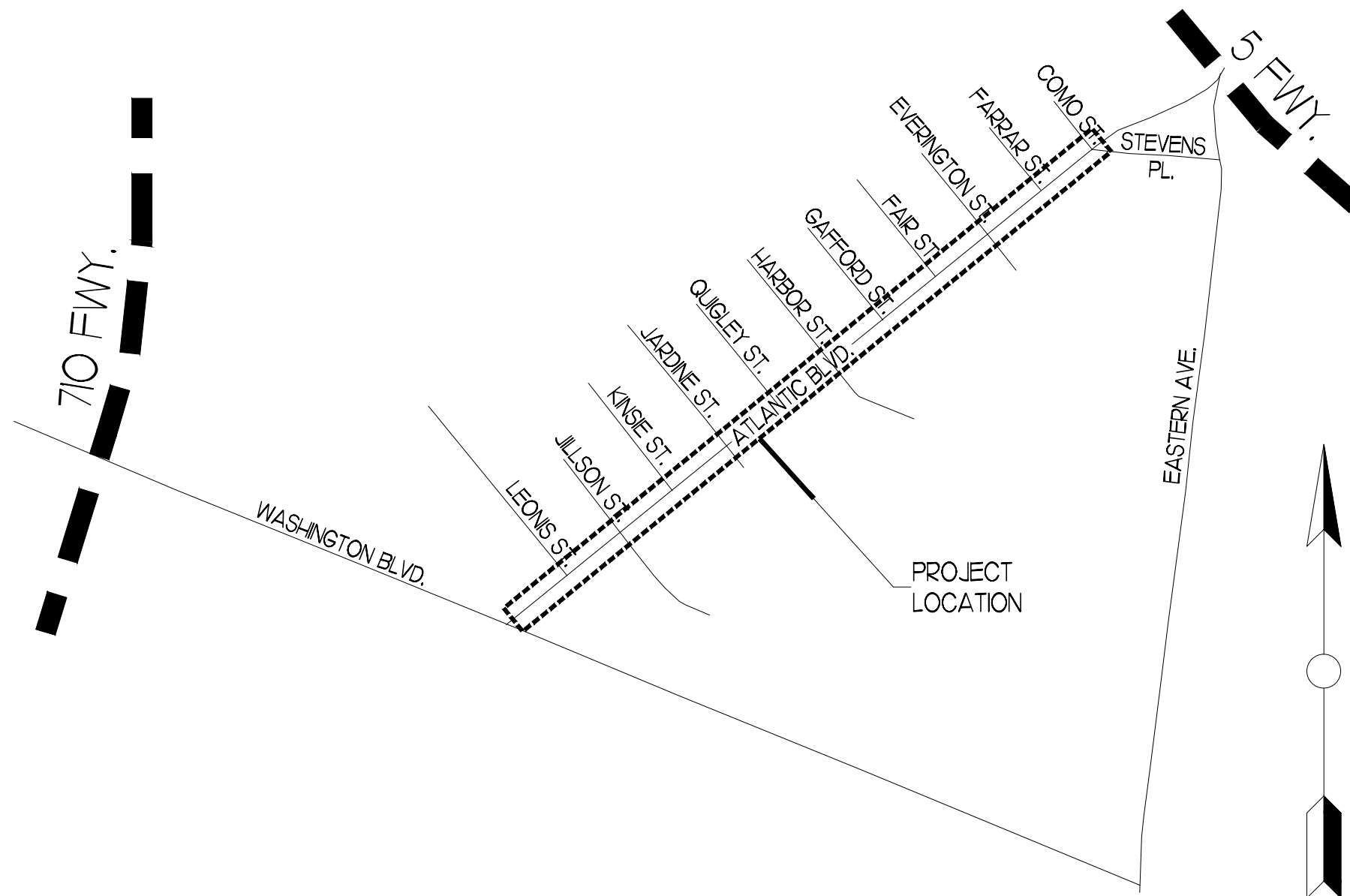
CONTRACTOR SHALL MAINTAIN JOB-SITE IN A WEED FREE STATE DURING CONSTRUCTION AND THE MAINTENANCE PERIOD BY USE OF ROUND-UP OR EQUAL NON-SELECTIVE HERBICIDE. CONTRACTOR SHALL KEEP SITE NEAT AND FREE OF CONSTRUCTION DEBRIS AND UNNEEDED EQUIPMENT AT ALL TIMES.

### SPECIFICATIONS & STANDARD PLANS

ALL WORK ILLUSTRATED IN THE PUBLIC RIGHT-OF-WAY IN THESE PLANS SHALL BE INSTALLED IN ACCORDANCE WITH THE STANDARD SPECIFICATIONS FOR PUBLIC WORKS CONSTRUCTION, LATEST EDITION, THE STANDARD PLANS FOR PUBLIC WORKS CONSTRUCTION, LATEST EDITION, AND ANY RELEVANT CITY AND REGIONAL STANDARD PLANS OR SPECIFICATIONS, IN ADDITION TO THE INFORMATION PROVIDED IN THE PLANS AND SPECIFICATIONS FOUND HEREIN.

## VICINITY MAP -

NOT TO SCALE



## HYDRO-ZONE AREA CALCULATIONS -

### HYDROZONE INFORMATION TABLE

HYDRO-ZONE	VALVE NO.'S	IRRIGATION METHOD	HYDROZONE AREA	% OF LANDSCAPE AREA
1 - LOW	A2,4, B2,4,5, C2,3,4, D1,3,6,7, E3,4,5	DRP	9145 SF	69%
2 - MOD	A1,3, B1,3, C1, D2,4,5,8, E1,2	DRP & BUBBLER	4110 SF	31%

## LANDSCAPE SHEET INDEX

SHEET NO.	SHEET NAME
LO1 OF 10	LANDSCAPE TITLE SHEET
LO2 - LO4 OF 10	PLANTING PLANS & DETAILS
LO5 - LO7 OF 10	IRRIGATION PLANS & DETAILS
LO8 - LO10 OF 10	LIGHTING PLANS & DETAILS



Underground Service Alert  
Call: TOLL FREE  
**811**  
TWO WORKING DAYS BEFORE YOU DIG



NO.	REVISIONS	REV. BY	APP. BY	DATE

PLAN DATE: <b>07/10/18</b>
PLOTTING HISTORY: 07/10/18 - Version 1
PROJECT FILE NO. - NAME: 1812 - Atlantic Blvd. Medians



**LOST WEST**  
A CALIFORNIA CORPORATION  
LANDSCAPE ARCHITECTURE  
GARDENS • PARKS • CITIES  
PO BOX 4548 Carlsbad, CA 92018  
5208 Townsend Ave. Los Angeles, CA 90041  
TEL: (760) 434-5790 OR (323) 258-8214

ELECTRONICALLY APPROVED BY:

PUBLIC WORKS & DEV. SERVICES DIRECTOR DATE

ELECTRONICALLY CHECKED BY:

TITLE DATE

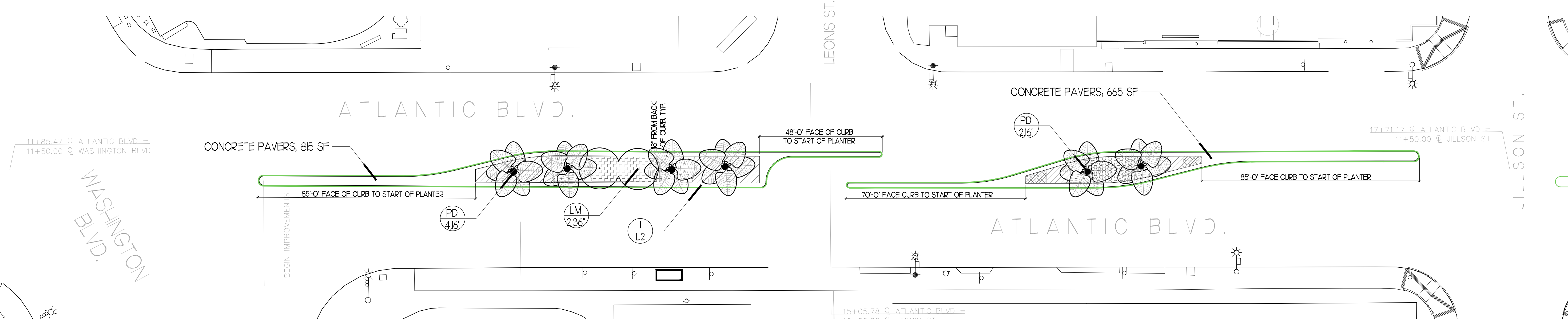
CITY OF COMMERCE  
PUBLIC WORKS AND ENGINEERING DEPARTMENT

ATLANTIC BOULEVARD CORRIDOR IMPROVEMENTS

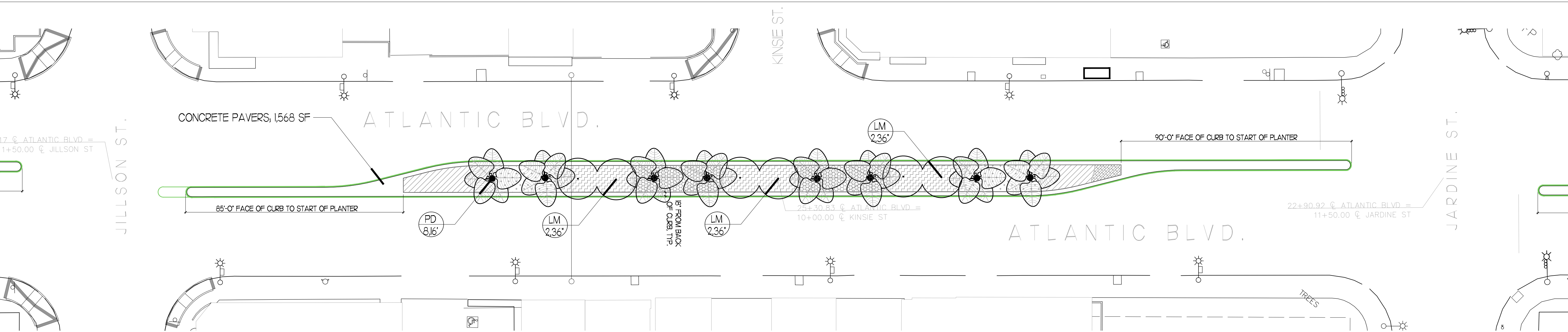
LANDSCAPE TITLE SHEET

SHEET 01 OF 10 SHEETS DRWG NO. L-01





PLANTING PLAN - WASHINGTON BLVD. TO JILLSON ST.  
SCALE - 1" = 20'-0"



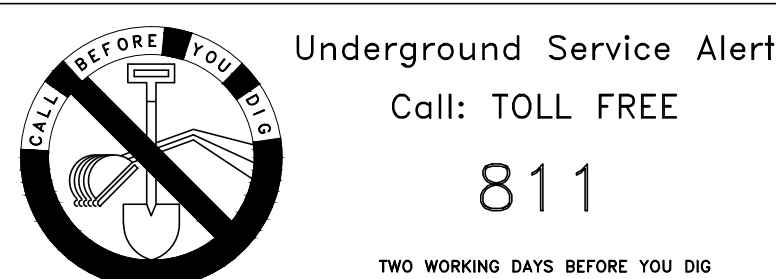
PLANTING PLAN - JILLSON ST. TO JARDINE ST.  
SCALE - 1" = 20'-0"

PLANTING LEGEND-ALL SHEETS

SYM	BOTANICAL NAME	COMMON NAME	QTY.	SIZE	WATER USE	REMARKS
TREES -						
PD	PHOENIX DACTYLIFERA	DATE PALM	43	MIN. 16' B.T.F.	LOW	FIELD GROWN, SINGLE TRUNK STANDARD
LM	LAGERSTROEMIA 'TUSCARORA'	GRAPE MYRTLE	29	36' BOX	MODERATE	
SHRUBS & GROUND COVER - BOTANICAL NAME / COMMON NAME, ON-CENTER (O.C.) SPACING, CONTAINER SIZE, WUCOLS, (TOTAL SQUARE FOOTAGE), REMARKS						
	AGAVE 'BLUE FLAME' / BLUE FLAME AGAVE, 2'-3" O.C., 5 GAL., LOW, (2,424 SF), PLANT NO CLOSER THAN 2'-0" O.C. FROM BACK OF CURB					
	BOUGANVILLEA 'OO-LA-LA' / 'OO-LA-LA' BOUGANVILLEA, 2'-6" O.C., 1 GAL., LOW, (3,257 SF), PLANT NO CLOSER THAN 2'-6" O.C. FROM BACK OF CURB					
	CALLISTEMON 'LITTLE JOHN' / DWf. BOTTLEBRUSH, 2'-6" O.C., 5 GAL., LOW, (3,050 SF), PLANT NO CLOSER THAN 2'-0" O.C. FROM BACK OF CURB					
	LANTANA MONTEVIDENSIS - WHITE / LANTANA, 2'-6" O.C., 1 GAL., LOW, (520 SF), PLANT NO CLOSER THAN 2'-6" O.C. FROM BACK OF CURB					
	STRELITZIA REGINAE / BRD OF PARADISE, 2'-9" O.C., 5 GAL., MODERATE, (3,322 SF), PLANT NO CLOSER THAN 2'-0" O.C. FROM BACK OF CURB					

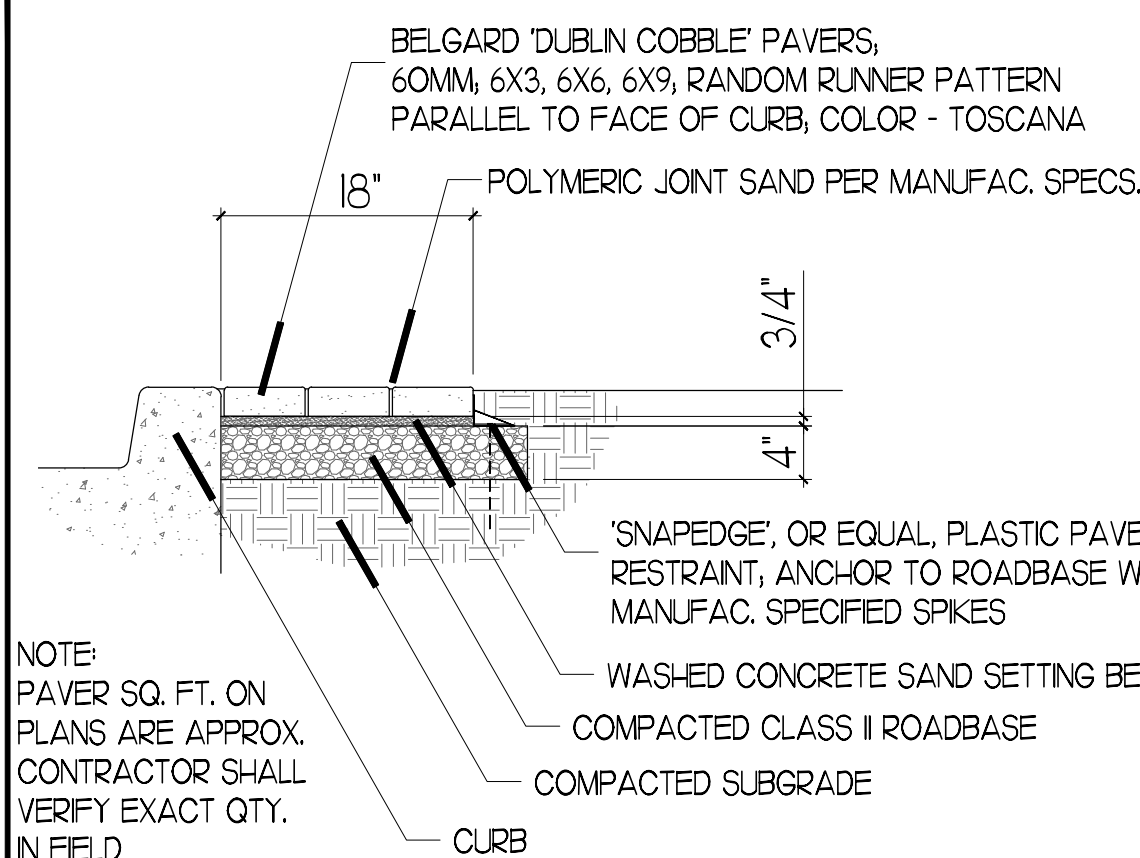
PLANT SYMBOL  
QUANTITY IN GROUP  
PLANT CALL-OUT SYMBOL

DETAIL NO.  
SHEET NO.  
DETAIL CALL-OUT SYMBOL



PLANTING NOTES -

- CONTRACTOR SHALL EXERCISE CARE IN LOCATING UNDERGROUND PIPELINES & UTILITIES PRIOR TO DIGGING BY CONTACTING THE UTILITY COMPANIES & UNDERGROUND SERVICE ALERT PRIOR TO THE START OF CONSTRUCTION. CONTRACTOR SHALL NOTIFY CITY REPRESENTATIVE OF ANY CONFLICTS FOUND DURING EXCAVATION IN ORDER TO FIND A RESOLUTION IN THE FIELD.
- CONTRACTOR SHALL COLLECT A SOIL SAMPLE FROM CLASS 'A' TOPSOIL USED TO FILL MEDIAN DURING GRADING AND SEND TO AN AGRONOMIC SOIL TESTING LAB FOR A FERTILITY ANALYSIS THAT SHALL INCLUDE TESTING FOR ORGANIC MATTER CONTENT, PH, SALINITY, N-P-K, EC, TEXTURE, AND SHALL CONTAIN RECOMMENDATIONS FOR AMENDMENTS, LEACHING, AND FERTILIZING. THE REPORT SHALL BE FOLLOWED IN THE PREPARATION OF THE SOIL AND PRIOR TO ANY PLANTING. CONTRACTOR SHALL GIVE CITY REPRESENTATIVE & LANDSCAPE ARCHITECT COPIES OF THE REPORT ALONG WITH A LIST OF PRODUCTS CONTRACTOR INTENDS TO USE TO AMEND SOIL PER THE REPORT.
- CONTRACTOR SHALL INSTALL PLANTINGS PER THESE PLANS, DETAILS AND SPECIFICATIONS, ANY APPLICABLE MANUFACTURERS SPECIFICATIONS, AND IN ACCORDANCE WITH THE STANDARD SPECIFICATIONS FOR PUBLIC WORKS CONSTRUCTION, LATEST ADOPTED EDITION.
- ALL PLANTED AREAS SHALL BE MULCHED TO A MINIMUM DEPTH OF 3" WITH A MEDIUM GRIND SHREDDED BARK MULCH. CONTRACTOR SHALL PROVIDE A SAMPLE OF MULCH TO CITY REPRESENTATIVE FOR APPROVAL PRIOR TO PURCHASE AND INSTALLATION.
- CONTRACTOR SHALL INSTALL DEEP ROOT, OR APPROVED EQUAL, LB-40 ROOT CONTROL PANELS, 24" DEEP, AT THE PERIMETER OF ALL PLANTERS AGAINST THE BACK OF THE CURB, PER THE MANUFACTURER'S SPECIFICATIONS. CONTRACTOR SHALL OMIT ROOT BARRIERS IN MEDIANS WITHOUT TREES OR, IN CASES WHERE THERE IS A LIMITED NUMBER OF TREES AS RELATES TO THE LENGTH OF THE MEDIAN, THEN ONLY FOR A DISTANCE OF 10 FEET IN EITHER DIRECTION FROM THE TRUNK OF THE LAST TREE.
- BARE ROOT PALM TREES SHALL BE PLANTED AND STAKED ON THE SAME DAY, PER THE DETAIL.
- PLANT LEGEND QUANTITIES ARE PROVIDED AS A CONVENIENCE TO THE CONTRACTOR. CONTRACTOR SHALL BE RESPONSIBLE FOR DETERMINING EXACT QUANTITIES SHOWN ON THE PLANS TO PROVIDE UNIFORM PLANT SPACING.



NO.	REVISIONS	REV. BY	APP. BY	DATE

PLAN DATE:  
07/10/18  
PLOTING HISTORY:  
07/10/18 - Version 1  
PROJECT FILE NO. - NAME:  
1812 - Atlantic Blvd. Medians

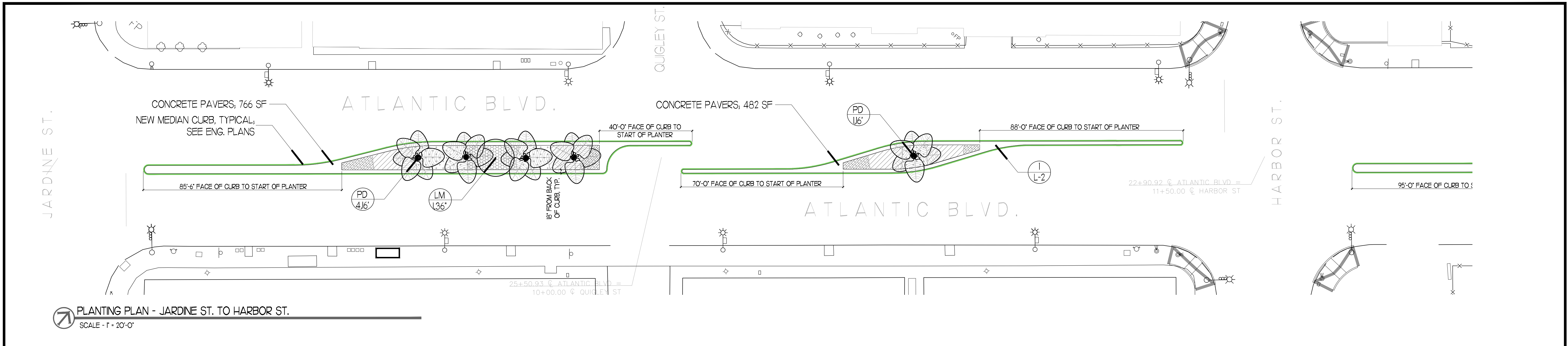


LOST WEST  
A CALIFORNIA CORPORATION  
LANDSCAPE ARCHITECTURE  
GARDENS • PARKS • CITIES  
PO BOX 4548 Carlsbad, CA 92018  
5208 Townsend Ave. Los Angeles, CA 90041  
TEL: (760) 434-5790 OR (323) 258-8214

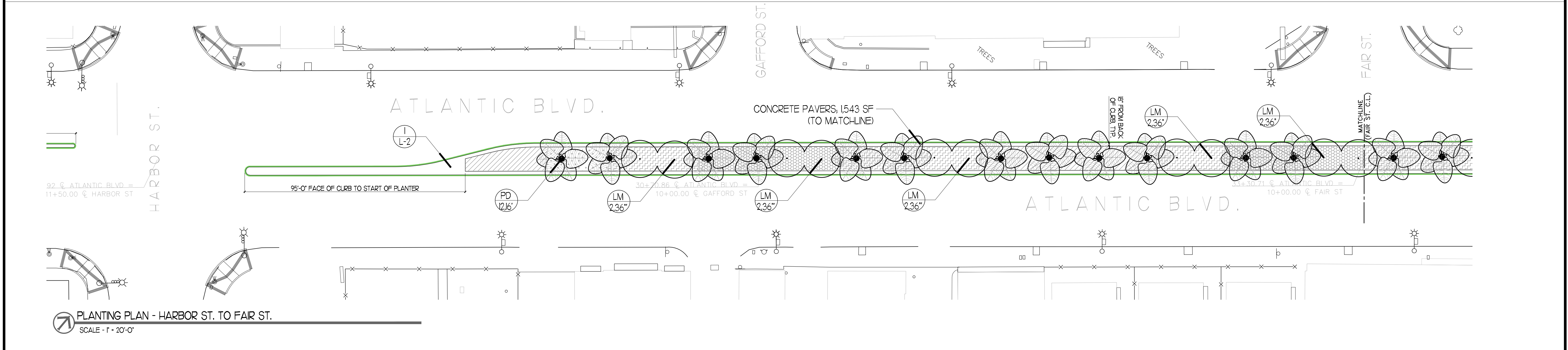
ELECTRONICALLY APPROVED BY:  
PUBLIC WORKS & DEV. SERVICES DIRECTOR  
DATE  
ELECTRONICALLY CHECKED BY:  
DATE  
TITLE

CITY OF COMMERCE  
PUBLIC WORKS AND ENGINEERING DEPARTMENT  
ATLANTIC BOULEVARD CORRIDOR IMPROVEMENTS  
PLANTING PLAN -  
WASHINGTON BLVD. TO JARDINE ST.  
SHEET 02 OF 10 SHEETS  
DRWG NO. L-02

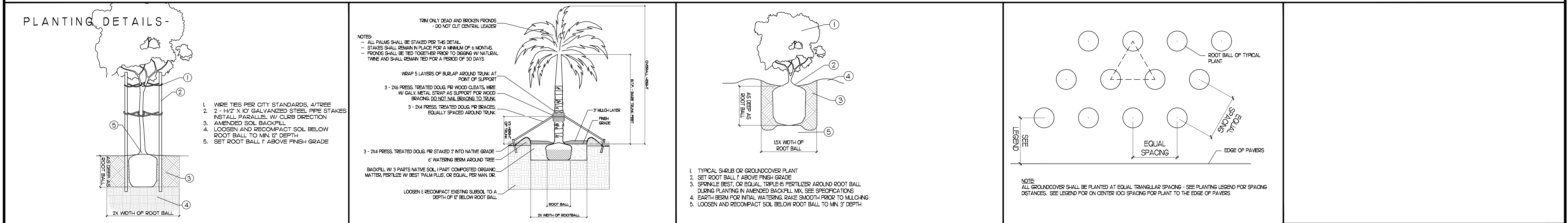


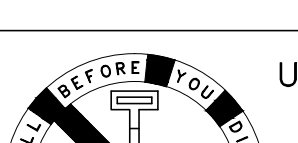




PLANTING PLAN - JARDINE ST. TO HARBOR ST.  
SCALE - 1" = 20'-0"

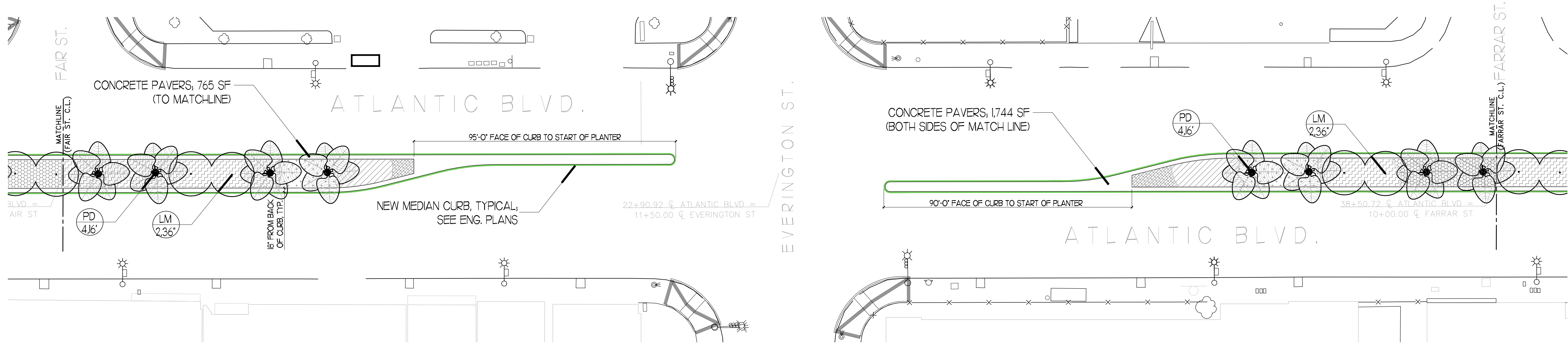


PLANTING PLAN - HARBOR ST. TO FAIR ST.  
SCALE - 1" = 20'-0"

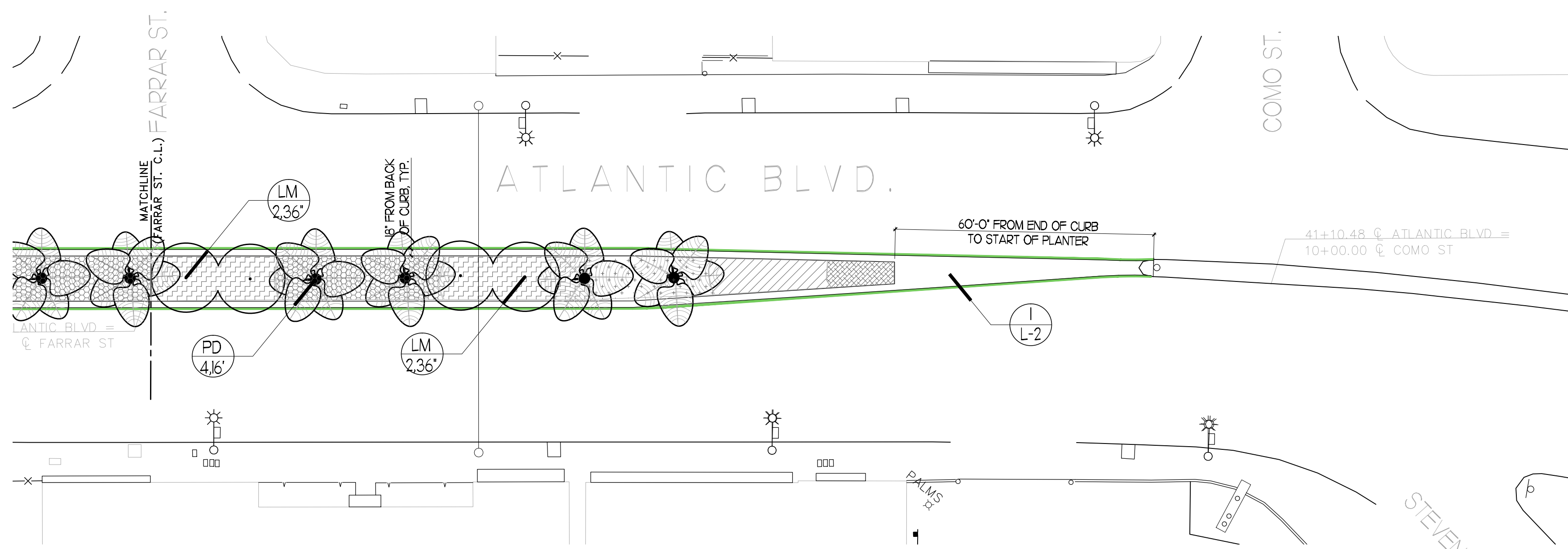


A CRAPE MYRTLE PLANTING NOT TO SCALE		B PALM TREE PLANTING NOT TO SCALE		C TYPICAL SHRUB PLANTING NOT TO SCALE		D TYPICAL GROUND COVER SPACING NOT TO SCALE		CITY OF COMMERCE PUBLIC WORKS AND ENGINEERING DEPARTMENT							
<div><div>Underground Service Alert Call: TOLL FREE 811 TWO WORKING DAYS BEFORE YOU DIG</div></div> <div><div>20 10 0 20 40 1"=20' GRAPHIC SCALE</div></div>				NO.		REVISIONS		REV. BY	APP. BY	DATE	PLAN DATE: 07/10/18		<div><div>Robert Mekjian NO. 3183 EXP. 05-31-20 REGISTERED LANDSCAPE ARCHITECT STATE OF CALIFORNIA</div></div> <div><div>LOST WEST</div><div>A CALIFORNIA CORPORATION</div><div>LANDSCAPE ARCHITECTURE</div><div>GARDENS • PARKS • CITIES</div><div>PO BOX 4548 Carlsbad, CA 92018</div><div>5208 Townsend Ave. Los Angeles, CA 90041</div><div>TEL: (760) 434-5790 OR (323) 258-8214</div></div> <div><div><div>Electronically Approved By: _____</div><div>PUBLIC WORKS &amp; DEV. SERVICES DIRECTOR</div><div>DATE _____</div></div><div><div>Electronically Checked By: _____</div><div>TITLE _____</div><div>DATE _____</div></div></div>	ATLANTIC BOULEVARD CORRIDOR IMPROVEMENTS	
											PLOTING HISTORY: 07/10/18 - Version 1			PLANTING PLAN – JARDINE ST. TO FAIR ST. C.L.	
											PROJECT FILE NO. - NAME: 1812 - Atlantic Blvd. Medians			SHEET 03 OF 10 SHEETS	





PLANTING PLAN - FAIR ST. TO FARRAR ST.  
SCALE - 1" = 20'-0"



PLANTING PLAN - FARRAR ST. TO COMO ST.  
SCALE - 1" = 20'-0"

### WUCOLS CALCULATIONS -

**MAWA:** Maximum Applied Water Allowance Calculations for New and Rehabilitated Non-Residential Landscapes

Enter value in Pale Blue Cells

**Tan Cells Show Results**

Messages and Warnings

Click on the blue cell on right to Pick City Name  
ET<sub>a</sub> of City from Appendix A

Los Angeles	Name of City
50.40 ET <sub>a</sub> (inches/year)	
0 Overhead Landscape Area (ft <sup>2</sup> )	
13255 Drip Landscape Area (ft <sup>2</sup> )	
0 SLA (ft <sup>2</sup> )	
13,255	Total Landscape Area
185,265 Gallons	
24,766 Cubic Feet	
248 HCF	
1 Acre-foot	
0 Millions of Gallons	

Results:  
(ET<sub>a</sub>) x (0.62) x [(0.45 x LA) + ((1.0 - 0.45) x SLA)]

MAWA calculation incorporating Effective Precipitation (Optional)  
Precipitation (Optional)  
ET<sub>a</sub> of City from Appendix A

50.40 ET <sub>a</sub> (inches/year)	
13,255 LA (ft <sup>2</sup> )	
0 SLA (ft <sup>2</sup> )	
	Total annual precipitation (inches/year)
0.00 Eppt (in/yr) (25% of total annual precipitation)	

Enter Effective Precipitation

Results:  
MAWA = (ET<sub>a</sub> - Eppt) x (0.62) x [(0.45 x LA) + ((1.0 - 0.45) x SLA)]

	Gallons
	Cubic Feet
	HCF
	Acre-foot
	Millions of Gallons

**ETWU:** Estimated Total Water Use

Equation:  $ETWU = ET_a \times 0.62 \times [((PF \times HA)/IE) + SLA]$ , Considering precipitation  $ETWA = (ET_a - Eppt) \times 0.62 \times [((PF \times HA)/IE) + SLA]$

Enter values in Pale Blue Cells

**Tan Cells Show Results**

Messages and Warnings

Irrigation Efficiency Default Values for overhead 0.75 and drip 0.81.

Plant Water Use Type	Plant Factor
Very Low	0-0.1
Low	0.2-0.3
Medium	0.4-0.6
High	0.7-1.0
SLA	1.0

Hydrozone #	Select System From the Dropdown List click on cell below	Plant Water Use Type (pf) (low, medium, high)	Plant Factor (PF)	Hydrozone Area (HA) (ft <sup>2</sup> ) Without SLA	Irrigation Efficiency (IE)	(PF x HA / IE)
Zone 1	Drip	Medium	0.50	4,100	0.81	2,537
Zone 2	Drip	Low	0.25	9,145	0.81	2,823
		SLA				0
		Sum		13,245		

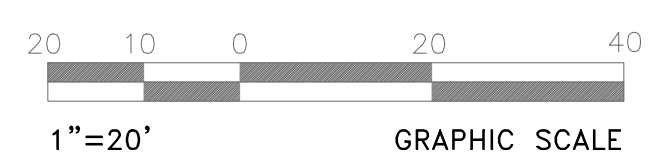
Results  
MAWA = 185,265

Total Landscape Area including Special  
ETWU = 166,468 Gallons  
22,254 Cubic Feet  
222.54 HCF  
0.51 Acre-foot  
0.17 Millions of Gallons

ETWU complies with MAWA



Underground Service Alert  
Call: TOLL FREE  
811  
TWO WORKING DAYS BEFORE YOU DIG

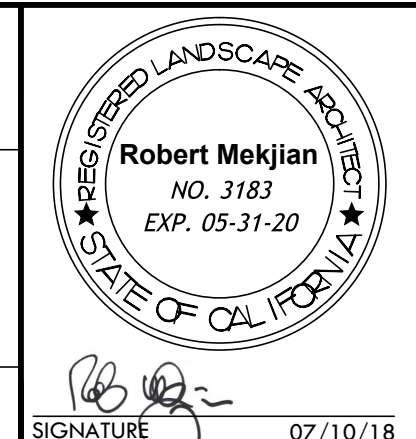


NO.	REVISIONS	REV. BY	APP. BY	DATE

PLAN DATE:  
07/10/18

PLOTTING HISTORY:  
07/10/18 - Version 1

PROJECT FILE NO. - NAME:  
1812 - Atlantic Blvd. Medians



**LOST WEST**  
A CALIFORNIA CORPORATION  
LANDSCAPE ARCHITECTURE  
GARDENS • PARKS • CITIES  
PO BOX 4548 Carlsbad, CA 92018  
5208 Townsend Ave. Los Angeles, CA 90041  
TEL: (760) 434-5790 OR (323) 258-8214

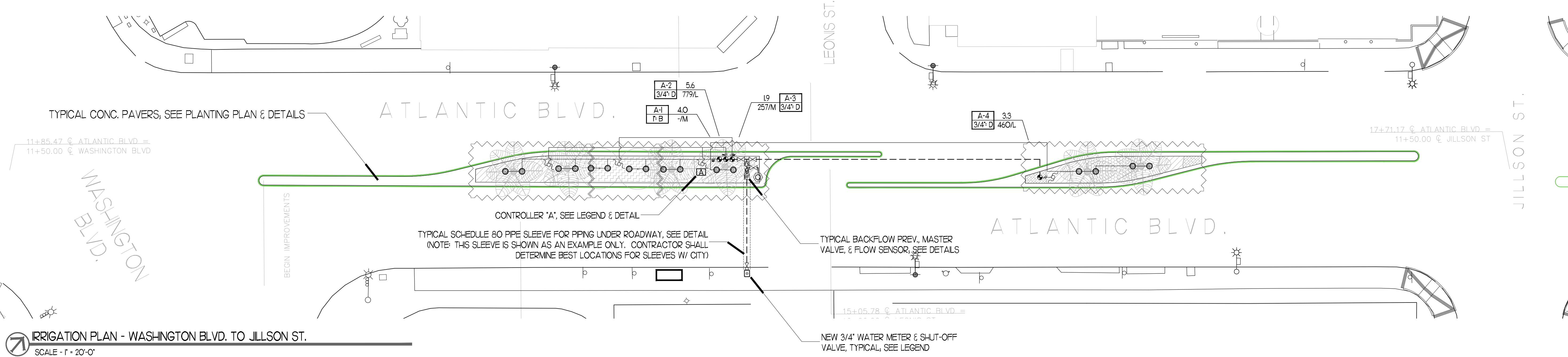
ELECTRONICALLY APPROVED BY:  
PUBLIC WORKS & DEV. SERVICES DIRECTOR DATE

ELECTRONICALLY CHECKED BY:  
DATE

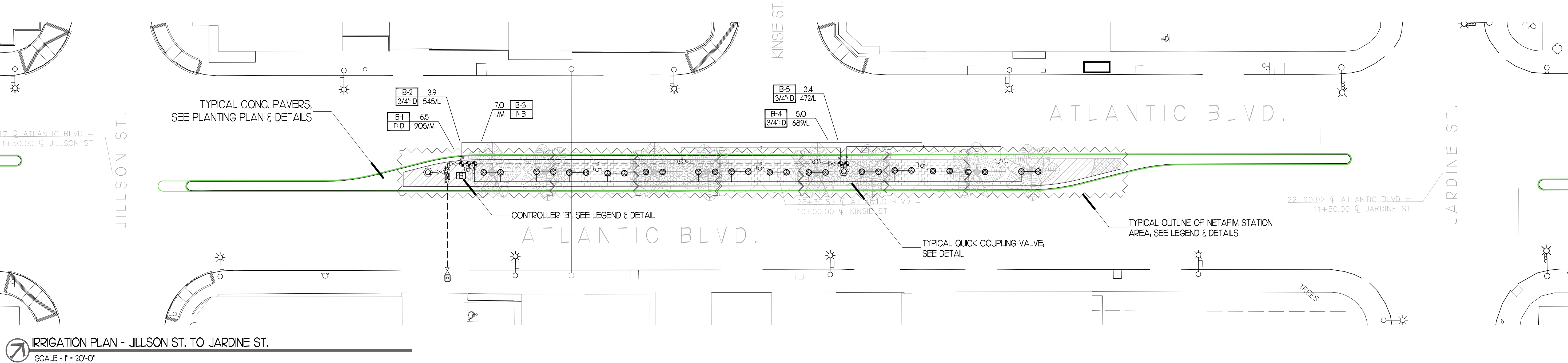
TITLE DATE

CITY OF COMMERCE PUBLIC WORKS AND ENGINEERING DEPARTMENT	
ATLANTIC BOULEVARD CORRIDOR IMPROVEMENTS	
PLANTING PLAN - FAIR ST. C.L. TO END AT COMO ST.	
SHEET 04 OF 10 SHEETS	DRWG NO. L-04





IRRIGATION PLAN - WASHINGTON BLVD. TO JILLSON ST.  
SCALE - 1" = 20'-0"



IRRIGATION PLAN - JILLSON ST. TO JARDINE ST.  
SCALE - 1" = 20'-0"

### IRRIGATION LEGEND-ALL SHEETS

- SYM DESCRIPTION (QTY.)
- WATER METERS (5) - CONTRACTOR SHALL INSTALL A NEW 3/4" DIA. WATER METER FOLLOWED IMMEDIATELY W/ A NEW WATTS, OR EQUAL, BRONZE FULL PORT BALL VALVE, 1" DIA. IN STANDARD RECTANGULAR CONCRETE VALVE BOX. CONTRACTOR SHALL BE RESPONSIBLE FOR REMOVING AND REPLACING ANY PORTIONS OF CONCRETE SIDEWALK DURING INSTALLATION AND SHALL COORDINATE ALL WORK W/ PUBLIC WORKS STAFF AND THE WATER PROVIDER. TYPE OF METER SHALL BE DETERMINED BY CITY.
  - BACKFLOW PREVENTER(S) - WILKINS MODEL 975XL2/SR, OR APPROVED EQUAL, 1" DIA. REDUCED PRESSURE BACKFLOW PREVENTER, W/ 1" FULL PORT BALL VALVES, 1" DIA. BRONZE WYE STRAINER, & 1" DIA. WILKINS MODEL 500 PRESSURE REGULATOR, INSTALL IN PROTECTIVE ENCLOSURE, SEE DETAIL.
  - MASTER VALVES (5) - GRISWOLD CONTROLS MODEL 2000H NORMALLY CLOSED, CAST IRON & BRONZE, SOLENOID MASTER VALVE W/ EPOXY COATING, 1" DIA.
  - FLOW SENSORS (5) - HUNTER 'FLOW-SYNC' MODEL FCT-100 FLOW SENSOR IN CARSON INDUSTRIES MODEL 90 10" RND. PLASTIC VALVE BOX W/ BOLT DOWN T-LID, SEE DETAIL.
  - CONTROLLERS (5) MARKED 'A' TO 'E' - DIG PRODUCTS 'LEIT 4000' SOLAR POWERED CONTROLLERS POST MOUNTED ON MODEL MCOL-4000 MOUNTING COLUMNS, 32" LONG, AS FOLLOWS: CONTROLLER A: 4 STATION; CONTROLLER B: 6 STATION; CONTROLLER C: 4 STATION; CONTROLLER D: 8 STATION; CONTROLLER E: 6 STATION. ALL CONTROLLERS SHALL BE INSTALLED W/ MODEL ENCL 4000-S STAIN. STEEL ENCLOSURE W/ RAIN SENSOR ENCLOSURE. CONTRACTOR SHALL INSTALL DIG 'SKIT' ADAPTER AND A HUNTER 'MINI-CLK' RAIN SENSOR (5) IN RAIN SENSOR ENCLOSURE ON EACH CONTROLLER COLUMN PER BOTH MANUFACTURER'S SPECIFICATIONS.

GPM  
DRIP SQ. FT. /  
HYDROZONE

C-7  
1" B

CONTROLLER - STATION NUMBER  
VALVE DIA: DRIP OR BUBBLER CIRCUIT

VALVE CALL-OUT SYMBOL



Underground Service Alert  
Call: TOLL FREE  
811  
TWO WORKING DAYS BEFORE YOU DIG

20 10 0 20 40  
1"=20'  
GRAPHIC SCALE

### SYM DESCRIPTION (QTY.)

- BALL SHUT-OFF VALVE (22) - WATTS, OR EQUAL, BRONZE FULL PORT BALL VALVE IN VALVE BOX PRIOR TO FIRST VALVE IN GROUP, 1" DIA, SEE DETAIL.
- AUTO. VALVES AS FOLLOWS - DRIP STATIONS: (3/4" DIA. - 13 TOTAL) - RAIN BIRD XCZ-075-PRF LOW FLOW CONTROL ZONE KIT, 3/4" LOW FLOW VALVE W/ PR FILTER IN STD. RECTANGULAR VALVE BOX, (1" DIA. - 7 TOTAL) - RAIN BIRD XCZLF-100-PRF LOW FLOW CONTROL ZONE KIT W/ PR FILTER IN STD. RECTANGULAR VALVE BOX, BUBBLER STATIONS: (1" DIA. - 6 TOTAL) - RAIN BIRD PGA SERIES GLOBE/ANGLE IN STD. RECTANGULAR VALVE BOX, SEE RESPECTIVE DETAILS.
- QUICK COUPLING VALVES (9) - RAIN BIRD 33-DLRC W/ LOCKING RUBBER COVER, 3/4" DIA. INSTALL IN CARSON INDUSTRIES MODEL 90 10" RND. PLASTIC VALVE BOX W/ BOLT DOWN T-LID, SEE DETAIL.
- ADAPT PVC PIPE IN PLANTING AREA TO NETAFIM TECHLINE (0.6 GPH X 12" O.C. EMITTER SPACING) IN EACH DRIP HYDRO-ZONE. SPACE LINES 15" O.C. STAGGER EMITTERS IN TUBING LAY-OUT. ANCHOR TUBING TO GRADE W/ 6" JUTE STAPLES PRIOR TO COVERING W/ MULCH, SEE DETAILS.
- ROOT WATERING TUBES (140) - RAIN BIRD MODEL RWS-B-C-140I ROOT WATERING SYSTEM W/ 0.25 GPM BUBBLER. INSTALL RWS TUBES AT EDGE OF TREE ROOT BALL, 2 PER TREE, MAINTAIN A MINIMUM OF 3 FT. FROM TREE UPLIGHTS, INSTALL PER MANUFACTURER'S SPECIFICATIONS, SEE DETAIL.
- LATERAL LINE - 3/4" DIA. PVC CLASS 200 PIPE
- LATERAL LINE - 1" DIA. PVC CLASS 200 PIPE
- IRRIGATION MAINLINE - SCH. 40 PVC, ALL 1" DIAMETER

### IRRIGATION NOTES-

- IRRIGATION PLAN IS DIAGRAMMATIC. CONFLICTS W/ PAVING AND PLANTING SHALL BE RESOLVED BY THE CONTRACTOR IN THE FIELD. ROUTING OF PIPE & LOCATION OF VALVES SHALL BE APPROX. AS SHOWN. DETERMINE EXACT LOCATIONS IN FIELD.
- ALL PIPING UNDER PAVING SHALL BE INSTALLED IN PIPE SLEEVING PER DETAIL. COORDINATE SLEEVE INSTALLATION W/ THE WORK OF OTHER TRADES.
- KEEP PVC LATERAL AND PRESSURE PIPING AT LEAST 12 INCHES FROM THE EDGE OF CONCRETE PAVERS.
- CONTRACTOR SHALL INSTALL IRRIGATION SYSTEM AS SHOWN. SUBSTITUTION OF COMPONENTS SHALL BE SUBJECT TO THE REVIEW & APPROVAL OF LOST WEST. CONTRACTOR SHALL BE SOLELY RESPONSIBLE FOR THE MEANS & METHODS OF CONSTRUCTION.
- CONTRACTOR SHALL INSTALL IRRIGATION CONTROL WIRE IN PVC CONDUIT AND BURY IN TRENCH W/ MAINLINE.

### SAMPLE IRRIGATION SCHEDULE-

DRIP - FIRST 6 MONTHS: MON, WED, FRI, 2 CYCLES, 20 MIN. PER CYCLE. AFTER 6 MONTHS: EVERY MON. & THURS., 3 CYCLES, 25 MIN. PER CYCLE. BUBBLERS - FIRST 6 MONTHS: TUES, SAT., 2 CYCLES, 20 MIN. PER CYCLE. AFTER 6 MONTHS: EVERY TUES., 2 CYCLES, 20 MIN. PER CYCLE.

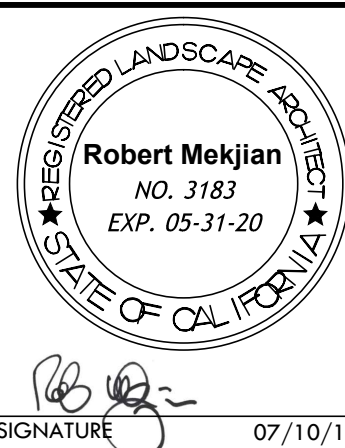
THIS IS A SAMPLE ONLY. CONTRACTOR SHALL OBSERVE THE PLANT PERFORMANCE DURING THE MAINTENANCE PERIOD AND ADJUST THE TIME AS NECESSARY FOR LOCAL CONDITIONS AND PLANT HEALTH.

NO.	REVISIONS	REV. BY	APP. BY	DATE

PLAN DATE:  
07/10/18

PLOTTING HISTORY:  
07/10/18 - Version 1

PROJECT FILE NO. - NAME:  
1812 - Atlantic Blvd. Medians



**LOST WEST**  
A CALIFORNIA CORPORATION  
LANDSCAPE ARCHITECTURE  
GARDENS • PARKS • CITIES  
PO BOX 4548 Carlsbad, CA 92018  
5208 Townsend Ave. Los Angeles, CA 90041  
TEL: (760) 434-5799 OR (323) 258-8214

SIGNATURE  
07/10/18

ELECTRONICALLY APPROVED BY:

PUBLIC WORKS & DEV. SERVICES DIRECTOR DATE

ELECTRONICALLY CHECKED BY:

TITLE DATE

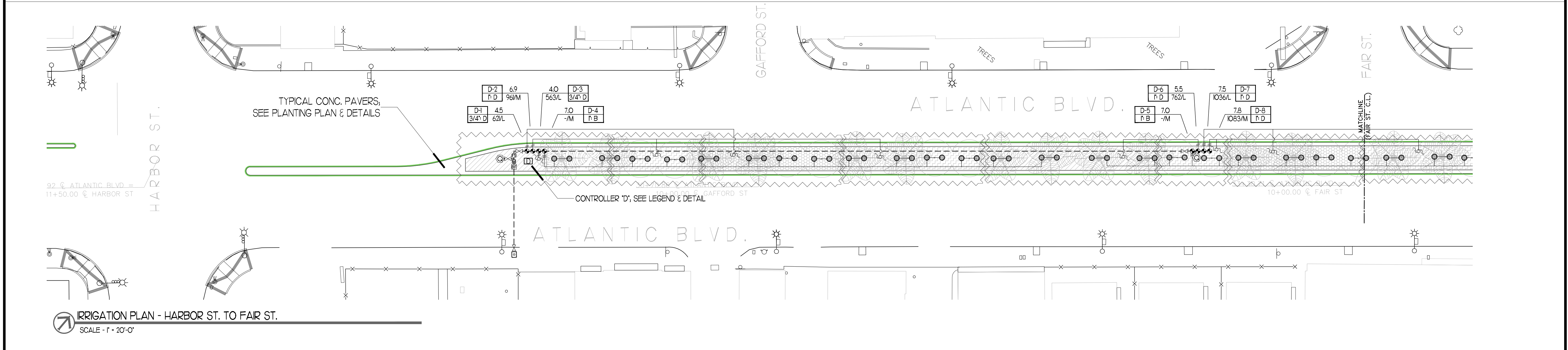
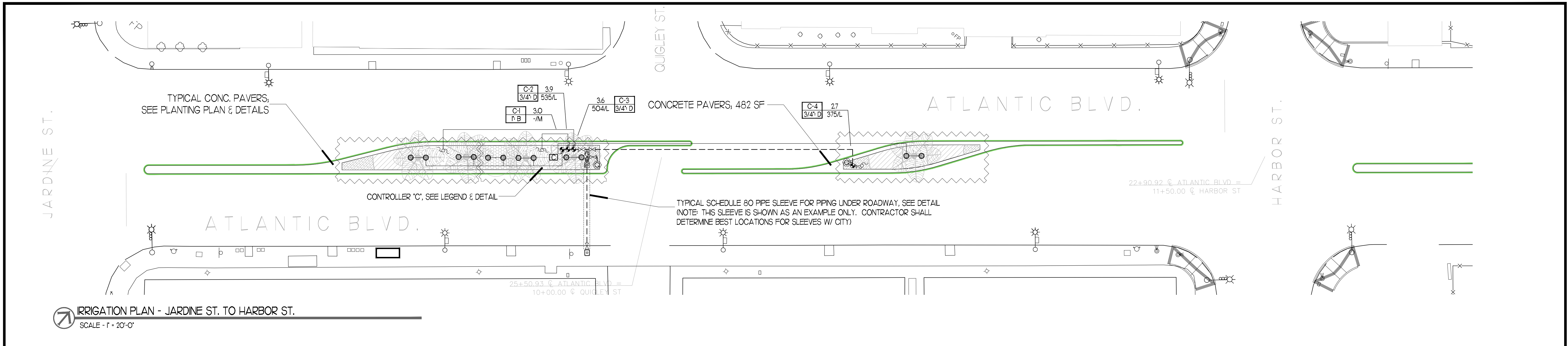
CITY OF COMMERCE  
PUBLIC WORKS AND ENGINEERING DEPARTMENT

ATLANTIC BOULEVARD CORRIDOR IMPROVEMENTS

IRRIGATION PLAN -  
WASHINGTON BLVD. TO JARDINE ST.

SHEET 05 OF 10 SHEETS DRWG NO. L-05





IRRIGATION DETAILS -

1. PAVING

2. CLEAN BACKFILL, 95% MIN. COMPACTION

3. WASHED SAND, 95% MIN. COMPACTION

4. PVC SCHEDULE 40 PIPE SLEEVES 2" DIA. MIN. WHEN ONLY 1 PIPE PASSING UNDER PAVING, 4" DIA. MIN. FOR MULTIPLE PIPE RUNS. MAINTAIN 40% OF SLEEVE CAPACITY OPEN FOR FUTURE PIPING EXTEND ALL SLEEVES MIN 12" BEYOND EDGE OF PAVING

NOTE: SLEEVING UNDER ROADBED SHALL BE SCHEDULE 80 PVC PIPE

1. REDUCED PRESSURE BACKFLOW PREVENTER, SEE PLAN FOR TYPE & SIZE

2. PRESSURE REDUCING VALVE, SEE PLAN FOR TYPE & SIZE

3. BROOKS WIRE STRAINER, SEE PLAN FOR TYPE & SIZE

4. BRASS PIPE & FITTINGS TO/FROM BRP UNIT, TYPICAL

5. TRANSITION TO SCHEDULE 40 PVC W/ BRASS COUPLING AND PVC MALE ADAPTERS ONLY, TYPICAL. INLET PRESSURE FROM METER GREATER THAN 100 PSI SHALL REQUIRE SCHEDULE 80 PVC PIPE AND FITTINGS

6. BRASS BALL VALVE LINE SIZE

7. 2500PSI CONC. SLAB W/ MED. BROOM FINISH, SIZE PER ENCL. MANUFACT. SPECS.

1. LIST CONTROLLER, MODEL 4000, SEE LEGEND

2. HIGH SECURITY S.S. DROG LOCK, MODEL 50-4025

3. HEAVY DUTY S.S. ENCLOSURE W/ LIGHT ACCESS THROUGH GRID ON TOP & INTERNAL CLAMP TO SECURE COLUMN MOUNTING, MODEL 4000

4. GALVANIZED STEEL MOUNTING COLUMN, MODEL 4000, 37" LONG

5. 1/2" X 8" 2500PSI MIN. CONCRETE BASE

6. FINISH GRADE

7. CONTROL WIRE IN CONDUIT (NOT SHOWN, SEE SPECIFICATIONS)

8. RAIN GAUGE ENCLOSURE MOUNTED TO SIDE OF COLUMN, SEE LEGEND

1. NDS PRO SERIES 6" X 24" RECTANGULAR POLYOLEFIN VALVE BOX, OR APPROVED EQUAL, BRAND LID W/ 1/2" R.R. SHUT-OFF, SEE NOTES

2. FINISH GRADE OR TOP OF MULCH

3. WATTS OR APPROVED EQUAL, BRONZE FULL-PORT BALL VALVE, SEE LEGEND

4. BRASS UNION, LINE SIZE

5. SUPPORT BRACK (4), TYP.

6. 7" MIN. LAYER OF 3/4" CRUSHED ROCK

7. MAINLINE PIPE & FITTINGS TO AND FROM VALVE, SEE PLAN & LEGEND

INSTALL BALL VALVE PRIOR TO FIRST NEW VALVE IN GROUP

1. VALVE BOX, SEE LEGEND

2. SCH. 80 PVC STREET EL.

3. SCH. 80 PVC NIPPLE - 6" LONG

4. BRASS QUICK-COUPLING VALVE, SEE LEGEND

5. S.S. SCREW CLAMP, MIN. (3) PLACES

6. 2" THICK PEA GRAVEL

7. #4 3' REBAR STAKE

8. BRASS NIPPLE, SIZE PER QUICK-COUPLER

9. BRASS ELBOW, TYP.

10. SCH. 40 PVC SUPPLY LINE

11. SCH. 80 PVC STREET EL. & TEE

1. FINISH GRADE 1" BELOW TOP OF BOX

2. NDS PRO, OR EQUAL, STD. RECT. VALVE BOX W/ 1/2" R.R. VALVE, BRANDED ON LID

3. DGS LEMMA ROOCH SOLENOID ACTUATOR FOR RAIN BRD DRP VALVES W/ VALVE ID. TAG

4. AUTOMATIC DRP VALVE, SEE LEGEND

5. PRESSURE REGULATING FILTER

6. PVC SCHEDULE 40 MANIFOLD INLET

7. PVC CLASS 200 LATERAL LINE TO DRP ZONE & PIPE ADAPTER, SEE LEG.

8. 2" MIN. DEPTH OF 3/4" CRUSHED ROCK UNDER VALVES, TYP.

9. COMMON BRICK SUPPORTS (4), TYP.

A TYPICAL PIPE SLEEVING NOT TO SCALE

B BACKFLOW PREVENTER IN ENCLOSURE NOT TO SCALE

C SOLAR POWER IRRIGATION CONTROLLER NOT TO SCALE

D BALL SHUT-OFF VALVE NOT TO SCALE

E QUICK COUPLING VALVE NOT TO SCALE

F DRIP CONTROL ZONE ASSEMBLY NOT TO SCALE

Underground Service Alert

Call: TOLL FREE 811

TWO WORKING DAYS BEFORE YOU DIG

20 10 0 20 40

1"=20'

GRAPHIC SCALE

NO. REVISIONS REV. BY APP. BY DATE

PLAN DATE: 07/10/18

PLOTTING HISTORY: 07/10/18 - Version 1

PROJECT FILE NO. - NAME: 1812 - Atlantic Blvd. Medians

REGISTERED LANDSCAPE ARCHITECT

Robert Mekjian

NO. 3183

EXP. 05-31-20

STATE OF CALIFORNIA

SIGNATURE 07/10/18

LOST WEST

A CALIFORNIA CORPORATION

LANDSCAPE ARCHITECTURE

GARDENS • PARKS • CITIES

PO BOX 4548 Carlsbad, CA 92018

5208 Townsend Ave. Los Angeles, CA 90041

TEL: (760) 434-5790 OR (323) 258-8214

ELECTRONICALLY APPROVED BY:

PUBLIC WORKS & DEV. SERVICES DIRECTOR DATE

ELECTRONICALLY CHECKED BY:

TITLE DATE

CITY OF COMMERCE

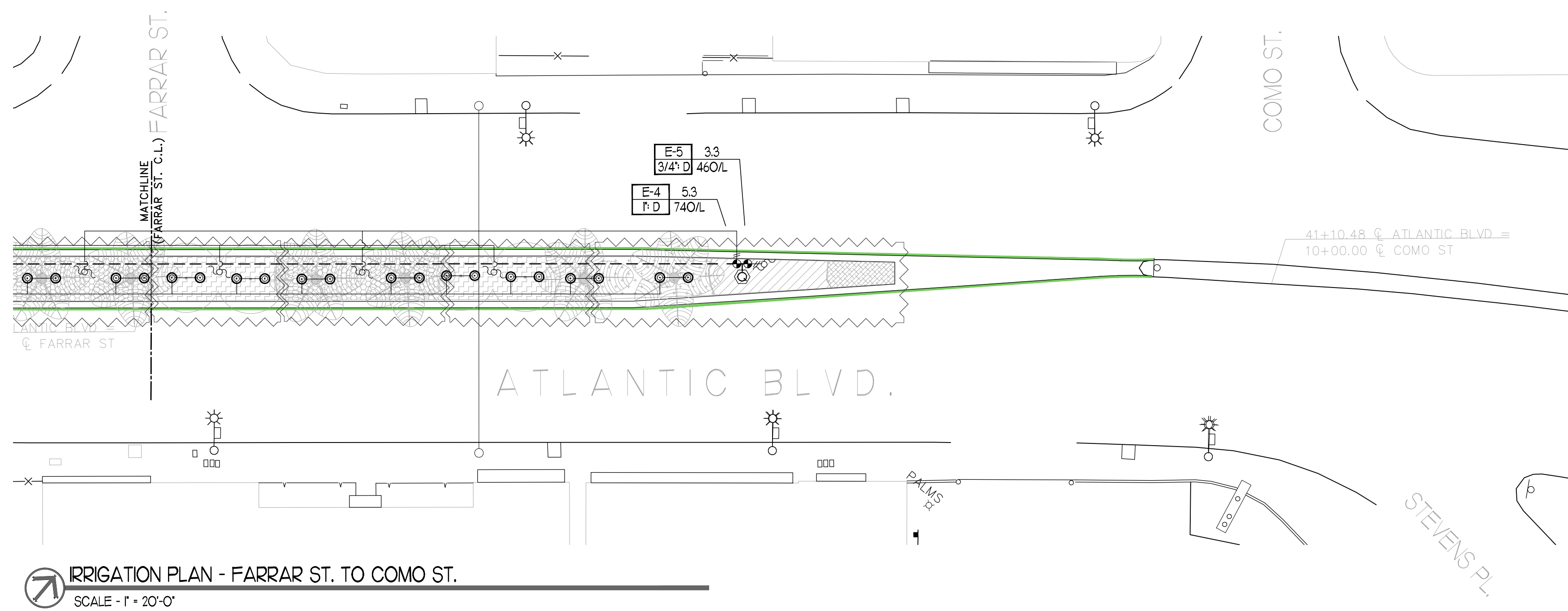
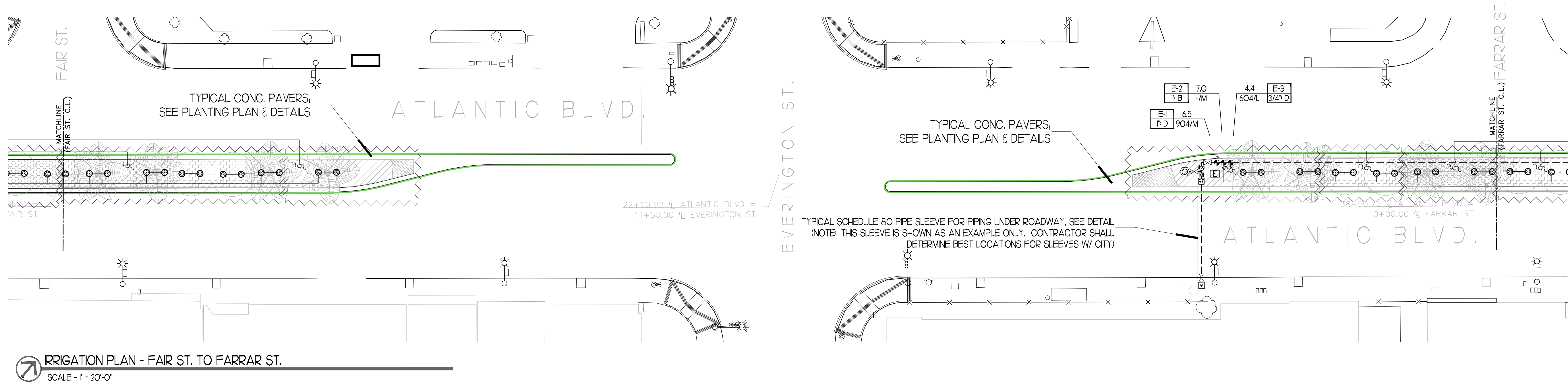
PUBLIC WORKS AND ENGINEERING DEPARTMENT

ATLANTIC BOULEVARD CORRIDOR IMPROVEMENTS

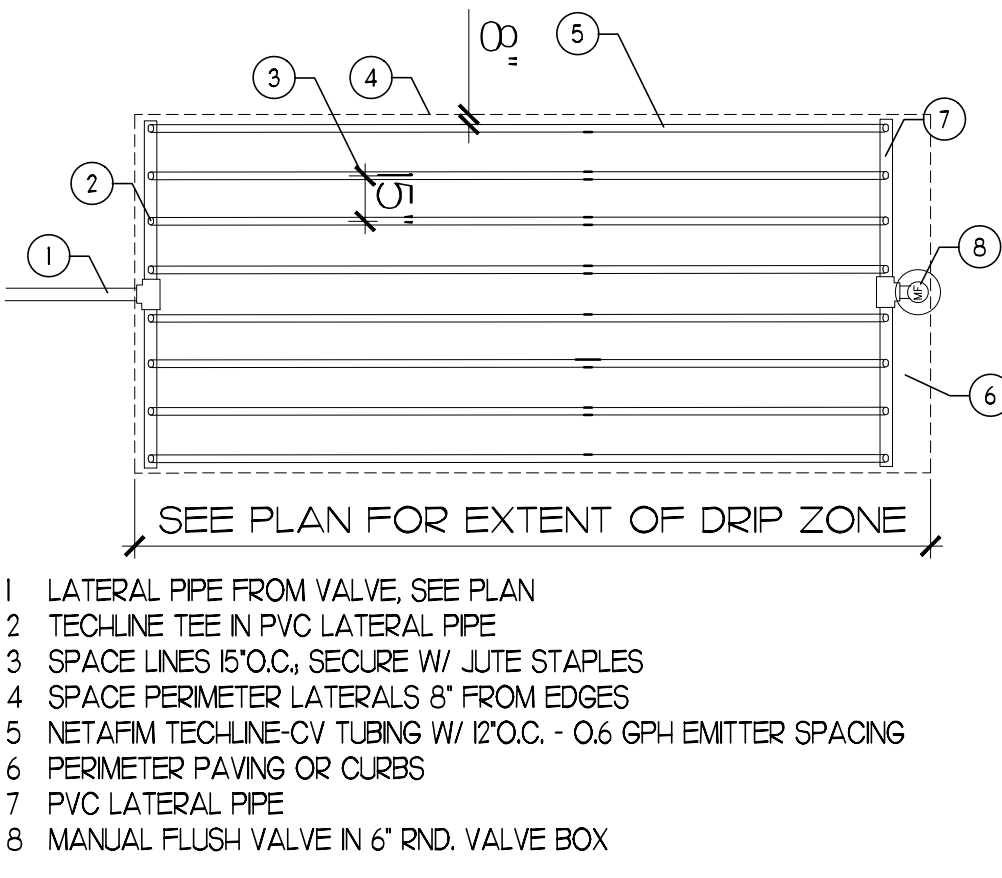
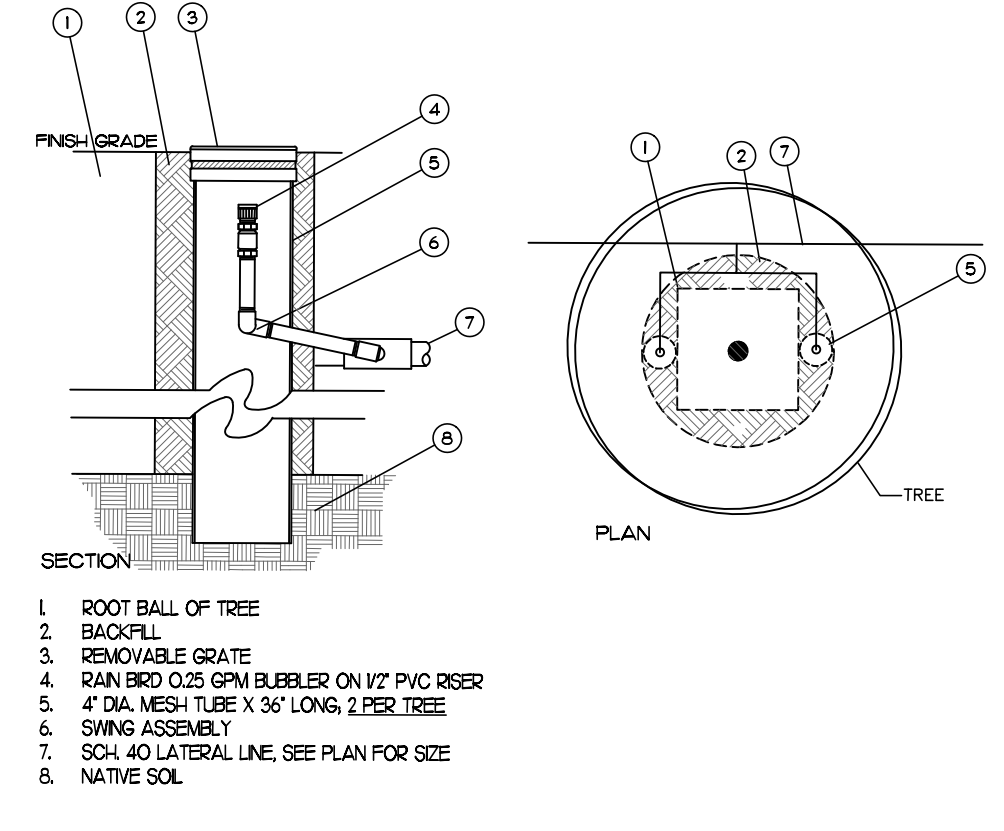
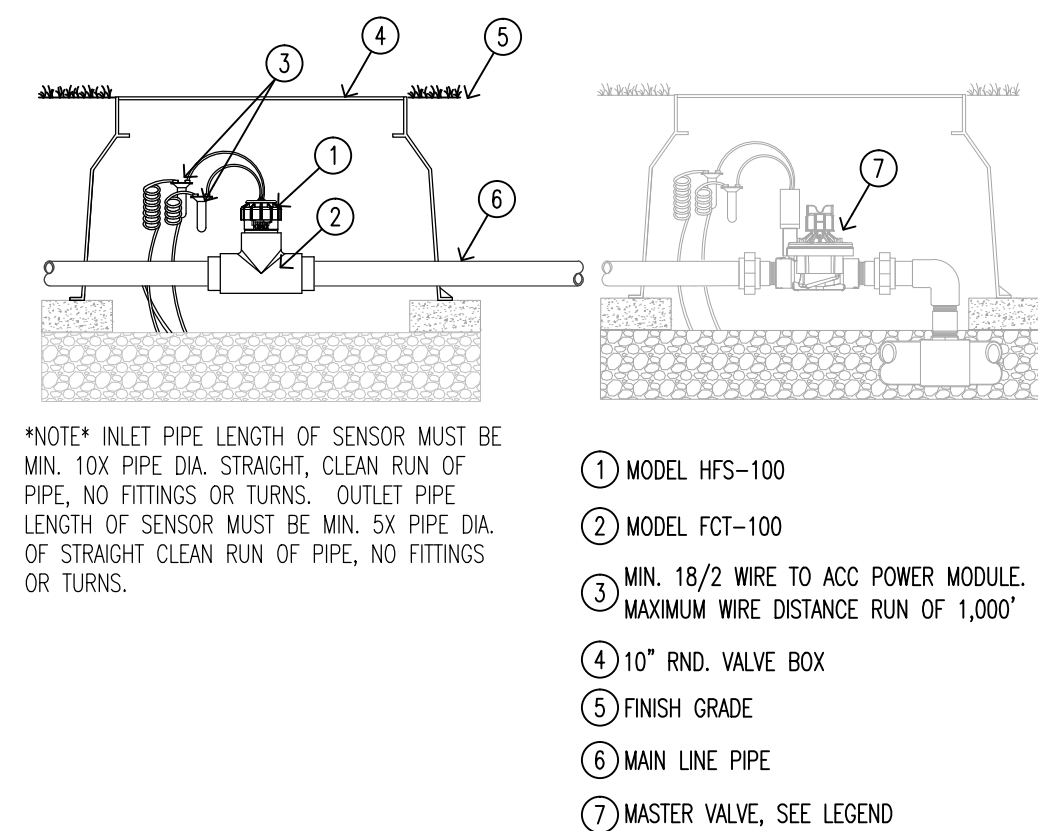
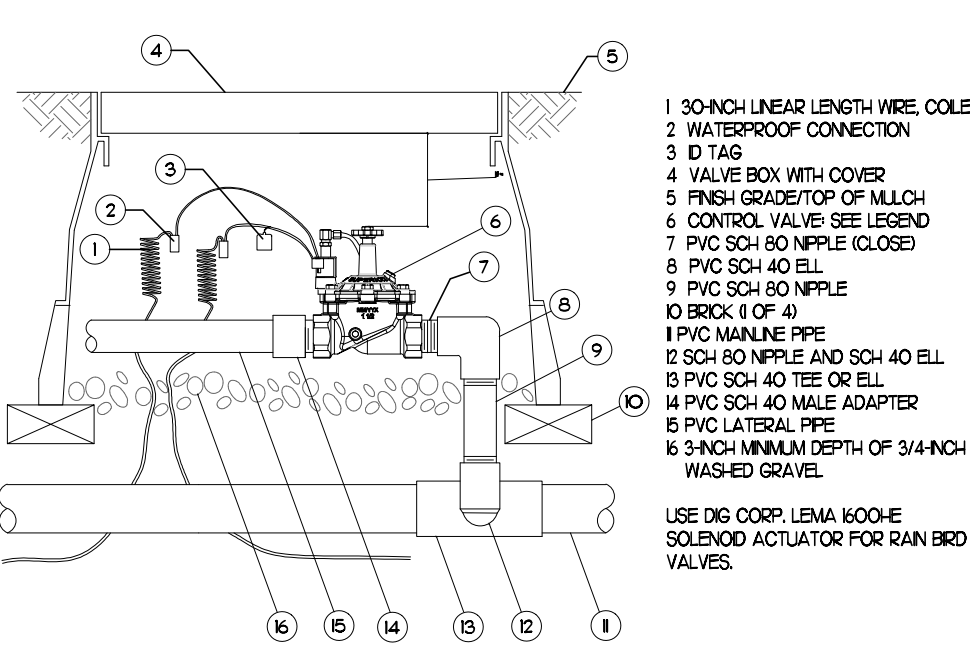
IRRIGATION PLAN - JARDINE ST. TO FAIR ST. C.L.

SHEET 06 OF 10 SHEETS DRWG NO. L-06





IRRIGATION DETAILS-(CONT.)



G AUTO. BUBBLER VALVE  
NOT TO SCALE

H HUNTER FLOW SENSOR STD. DETAIL  
NOT TO SCALE

I TREE ROOT WATERING SYSTEM  
NOT TO SCALE

TYPICAL NETAFIM TUBING SYS. LAY-OUT  
NOT TO SCALE

CITY OF COMMERCE  
PUBLIC WORKS AND ENGINEERING DEPARTMENT

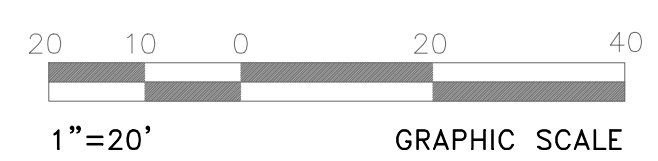
ATLANTIC BOULEVARD CORRIDOR IMPROVEMENTS

IRRIGATION PLAN -  
FAIR ST. C.L. TO END AT COMO ST.

SHEET 07 OF 10 SHEETS DRWG NO. L-07

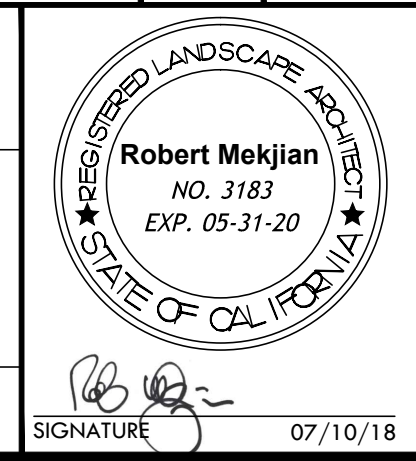


Underground Service Alert  
Call: TOLL FREE  
811  
TWO WORKING DAYS BEFORE YOU DIG



NO.	REVISIONS	REV. BY	APP. BY	DATE

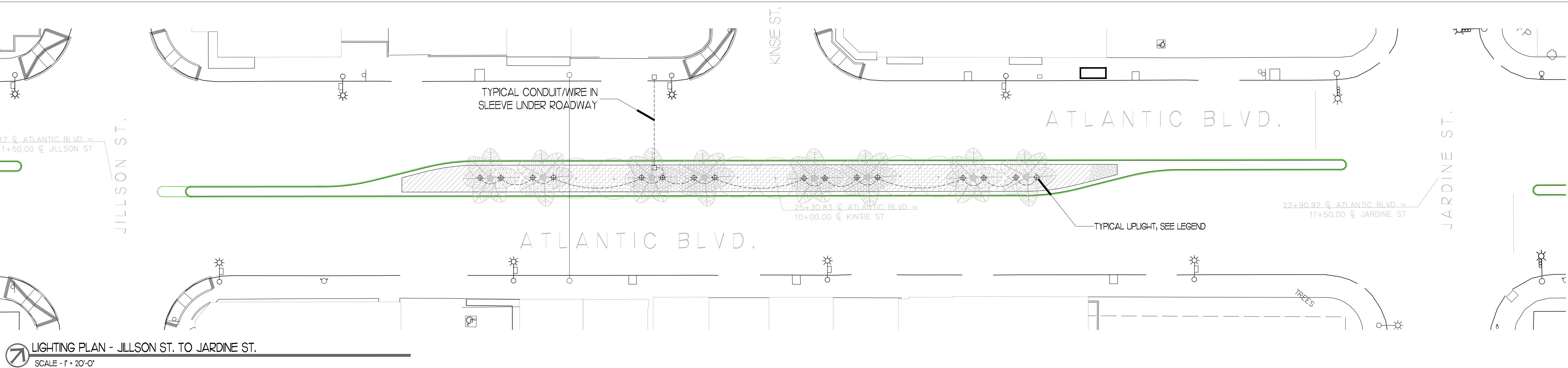
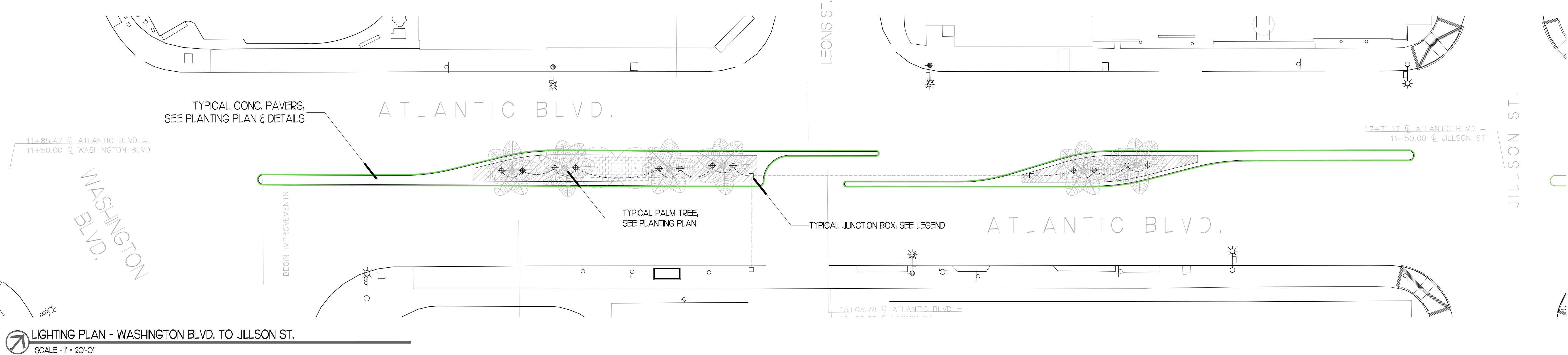
PLAN DATE:  
07/10/18  
PLOTING HISTORY:  
07/10/18 - Version 1  
PROJECT FILE NO. - NAME:  
1812 - Atlantic Blvd. Medians



LOST WEST  
A CALIFORNIA CORPORATION  
LANDSCAPE ARCHITECTURE  
GARDENS • PARKS • CITIES  
PO BOX 4548 Carlsbad, CA 92018  
5208 Townsend Ave. Los Angeles, CA 90041  
TEL: (760) 434-5790 OR (323) 258-8214

ELECTRONICALLY APPROVED BY:  
PUBLIC WORKS & DEV. SERVICES DIRECTOR DATE  
ELECTRONICALLY CHECKED BY:  
TITLE DATE



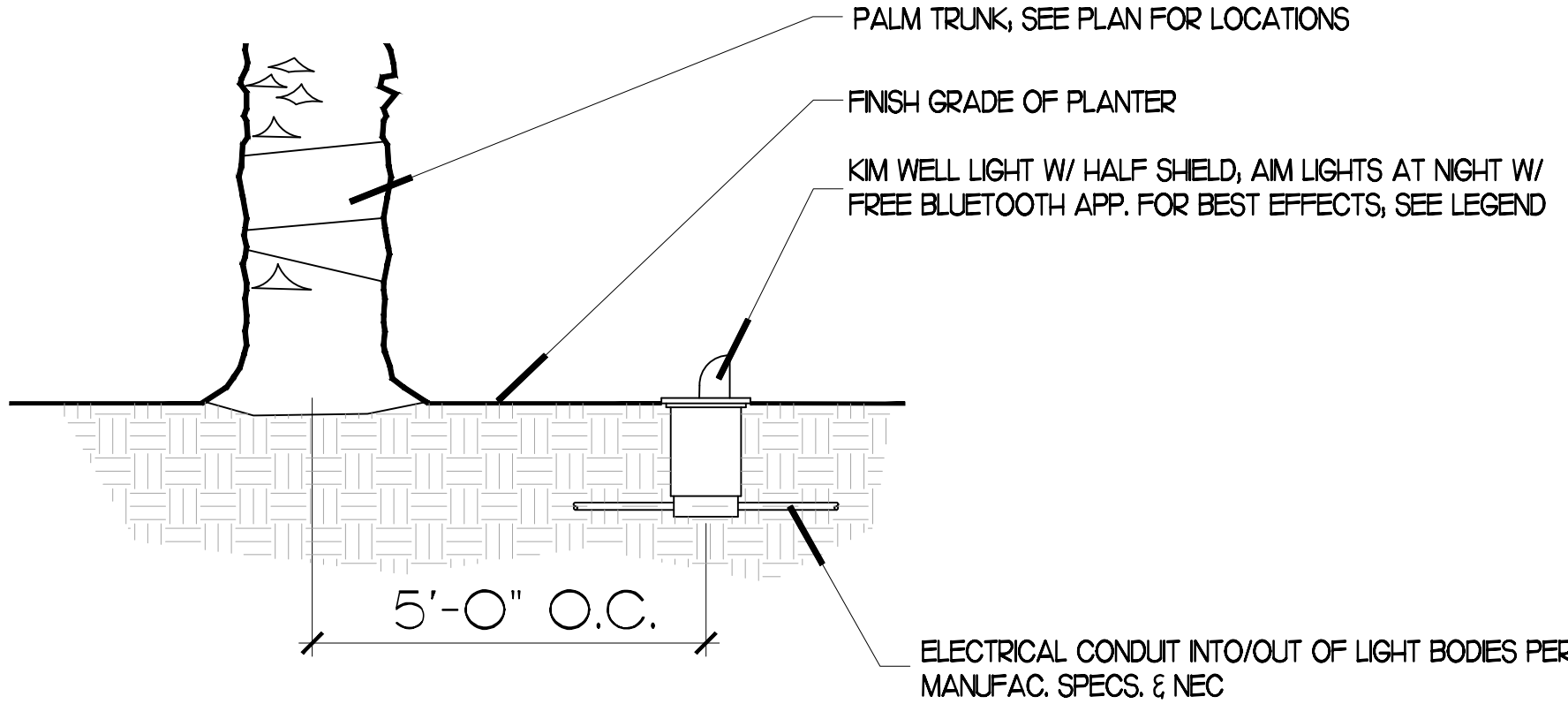


LIGHTING LEGEND-ALL SHEETS

- SYM DESCRIPTION (QTY.)
- LED. PALM UPLIGHTS: KIM LIGHTING LTV SERIES, GROUND RECESSED MODEL LTV824S/SP 18L3KUV, 18 WATTS, 3000K, W/ HALF SHIELD OPTION; SEE DETAIL
  - CONDUIT/WIRE: WIRE SHALL BE A HOME RUN FROM ELECTRICAL PANEL TO MEDIAN. CONTRACTOR SHALL DETERMINE FIXTURE LOAD FOR EACH MEDIAN AND SIZE CONDUIT & WIRE ACCORDINGLY. LOCATION OF MAIN PANEL(S)/CABINET(S), PULL BOXES, J-BOXES, & GROUND RODS SHALL BE DESIGNED BY CONTRACTOR AND APPROVED BY CITY PRIOR TO STARTING PROJECT. CONTRACTOR SHALL COORDINATE W/ CITY TO DETERMINE METHOD OF CONTROLS FOR LIGHTING SYSTEMS.
  - PULL BOX/HAND-HOLD BOX: CONCRETE BOX W/ LD MARKED "ELECTRICAL"

LIGHTING NOTES-

- LIGHTING PLAN IS DIAGRAMMATIC. CONFLICTS W/ IRRIGATION AND PLANTING SHALL BE RESOLVED BY THE CONTRACTOR IN THE FIELD. ROUTING OF CONDUIT & LOCATION OF PULL BOXES SHALL BE AS DETERMINED BY CITY.
- ALL CONDUIT SHOWN UNDER PAVING SHALL BE INSTALLED IN PIPE SLEEVING PER THE DETAIL ON SHEET L-09. COORDINATE SLEEVE INSTALLATION W/ THE WORK OF OTHER TRADES.
- MAINTAIN A MIN. OF 12 INCHES BETWEEN CONDUIT AND THE EDGE OF CONCRETE PAVERS. MAINTAIN A MIN. OF 6' FROM IRRIGATION LINES.
- CONTRACTOR SHALL INSTALL ALL ELECTRICAL CONDUITS, WIRE, BOXES AND LIGHTS IN ACCORDANCE W/ THE NEC, LATEST EDITION, THE STANDARD SPECIFICATIONS FOR PUBLIC WORKS CONSTRUCTION, LATEST EDITION, AND ANY MANUFACTURER'S SPECIFICATIONS.
- THIS PLAN DEPICTS LOCATIONS AND TYPES OF LIGHT FIXTURES ONLY. CONTRACTOR SHALL PROVIDE COMPLETE LIGHTING DESIGN DOCUMENTS COMPLYING W/ THE 2016 CALIFORNIA ELECTRICAL CODE (CEC) W/ CITY AMENDMENTS OR OTHER AUTHORITIES HAVING JURISDICTION.



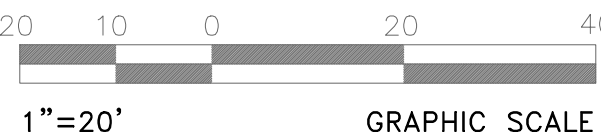
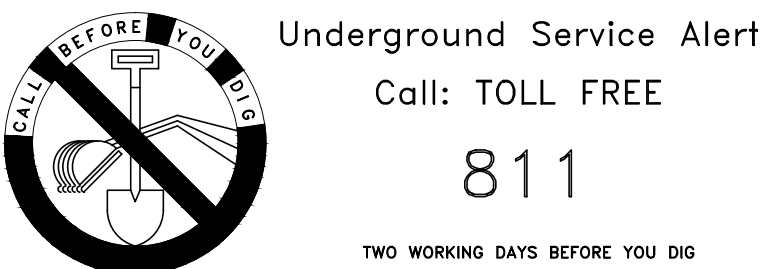
A KIM WELL LIGHT  
NOT TO SCALE

CITY OF COMMERCE  
PUBLIC WORKS AND ENGINEERING DEPARTMENT

ATLANTIC BOULEVARD CORRIDOR IMPROVEMENTS

LIGHTING PLAN -  
WASHINGTON BLVD. TO JARDINE ST.

SHEET 08 OF 10 SHEETS DRWG NO. L-08

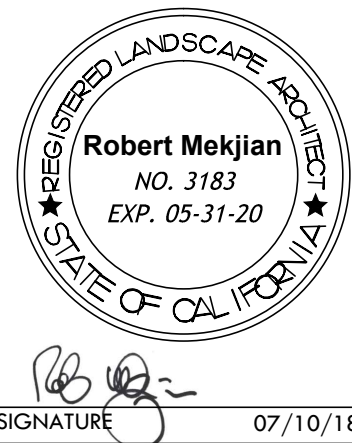


NO.	REVISIONS	REV. BY	APP. BY	DATE

PLAN DATE:  
07/10/18

PLOTTING HISTORY:  
07/10/18 - Version 1

PROJECT FILE NO. - NAME:  
1812 - Atlantic Blvd. Medians



LOST WEST  
A CALIFORNIA CORPORATION  
LANDSCAPE ARCHITECTURE

GARDENS • PARKS • CITIES  
PO BOX 4548 Carlsbad, CA 92018  
5208 Townsend Ave. Los Angeles, CA 90041  
TEL: (760) 434-5790 OR (323) 258-8214

ELECTRONICALLY APPROVED BY:

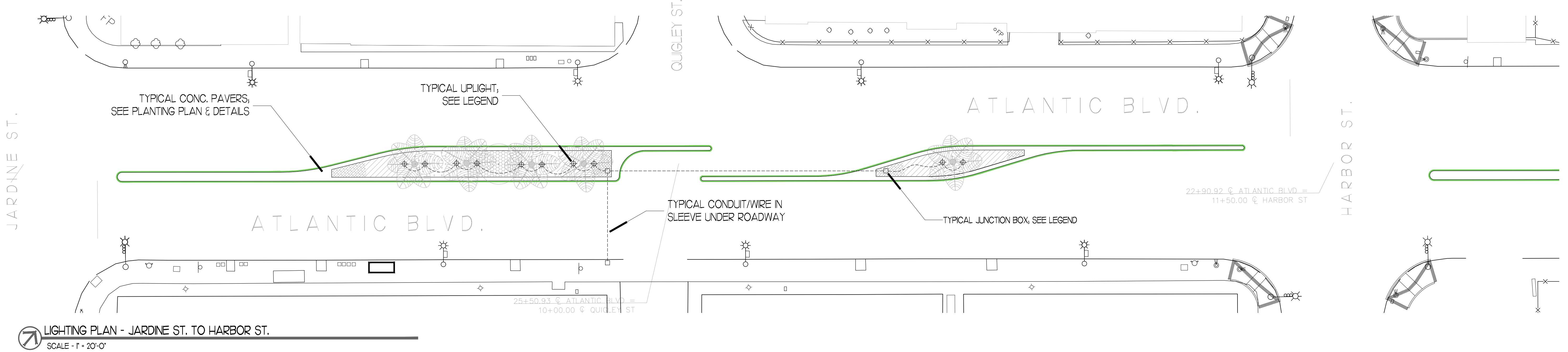
PUBLIC WORKS & DEV. SERVICES DIRECTOR DATE

ELECTRONICALLY CHECKED BY:

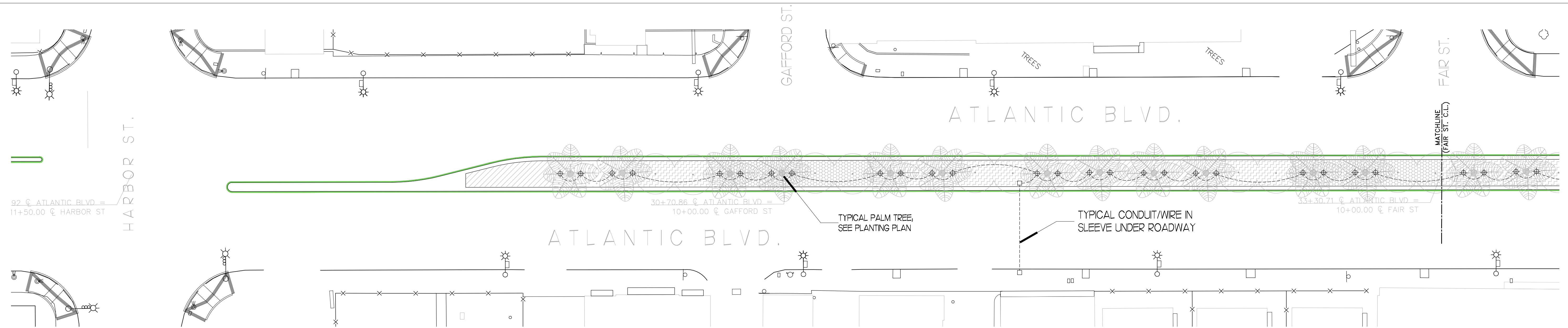
TITLE

DATE





LIGHTING PLAN - JARDINE ST. TO HARBOR ST.  
SCALE - 1" = 20'-0"



LIGHTING PLAN - HARBOR ST. TO FAIR ST.  
SCALE - 1" = 20'-0"

**KIMLIGHTING** LTVBHS  
Lightview® B-Half Shield 1/2" Diameter, 1/2" Depth

**NOTES**

- Easy to install and use
- Substantially exceeds all safety standards
- Substantially exceeds all safety standards
- Substantially exceeds all safety standards

**CERTIFICATIONS**

**FEATURES**

- 1/2" diameter, 1/2" depth
- 1/2" diameter, 1/2" depth
- 1/2" diameter, 1/2" depth

**INSTALLATION**

**ORDERING CODE**

**CONTACT**

**KIMLIGHTING** LTVBHS  
Lightview® B-Half Shield 1/2" Diameter, 1/2" Depth

**NOTES**

- 1/2" diameter, 1/2" depth
- 1/2" diameter, 1/2" depth
- 1/2" diameter, 1/2" depth

**CERTIFICATIONS**

**FEATURES**

- 1/2" diameter, 1/2" depth
- 1/2" diameter, 1/2" depth
- 1/2" diameter, 1/2" depth

**INSTALLATION**

**ORDERING CODE**

**CONTACT**

**KIMLIGHTING** LTVBHS  
Lightview® B-Half Shield 1/2" Diameter, 1/2" Depth

**NOTES**

- 1/2" diameter, 1/2" depth
- 1/2" diameter, 1/2" depth
- 1/2" diameter, 1/2" depth

**CERTIFICATIONS**

**FEATURES**

- 1/2" diameter, 1/2" depth
- 1/2" diameter, 1/2" depth
- 1/2" diameter, 1/2" depth

**INSTALLATION**

**ORDERING CODE**

**CONTACT**



Underground Service Alert  
Call: TOLL FREE  
811  
TWO WORKING DAYS BEFORE YOU DIG

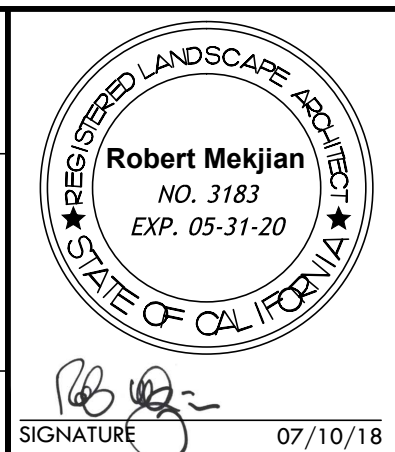


NO.	REVISIONS	REV. BY	APP. BY	DATE

PLAN DATE:  
07/10/18

PLOTTING HISTORY:  
07/10/18 - Version 1

PROJECT FILE NO. - NAME:  
1812 - Atlantic Blvd. Medians



**LOST WEST**  
A CALIFORNIA CORPORATION  
LANDSCAPE ARCHITECTURE  
GARDENS • PARKS • CITIES  
PO BOX 4548 Carlsbad, CA 92018  
5208 Townsend Ave. Los Angeles, CA 90041  
TEL: (760) 434-5790 OR (323) 258-8214

ELECTRONICALLY APPROVED BY:  
PUBLIC WORKS & DEV. SERVICES DIRECTOR DATE

ELECTRONICALLY CHECKED BY:  
DATE

TITLE DATE

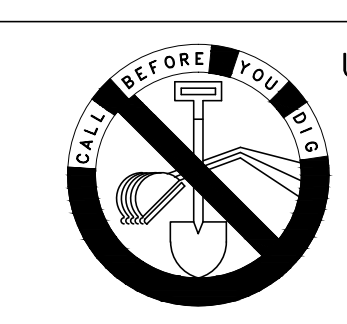
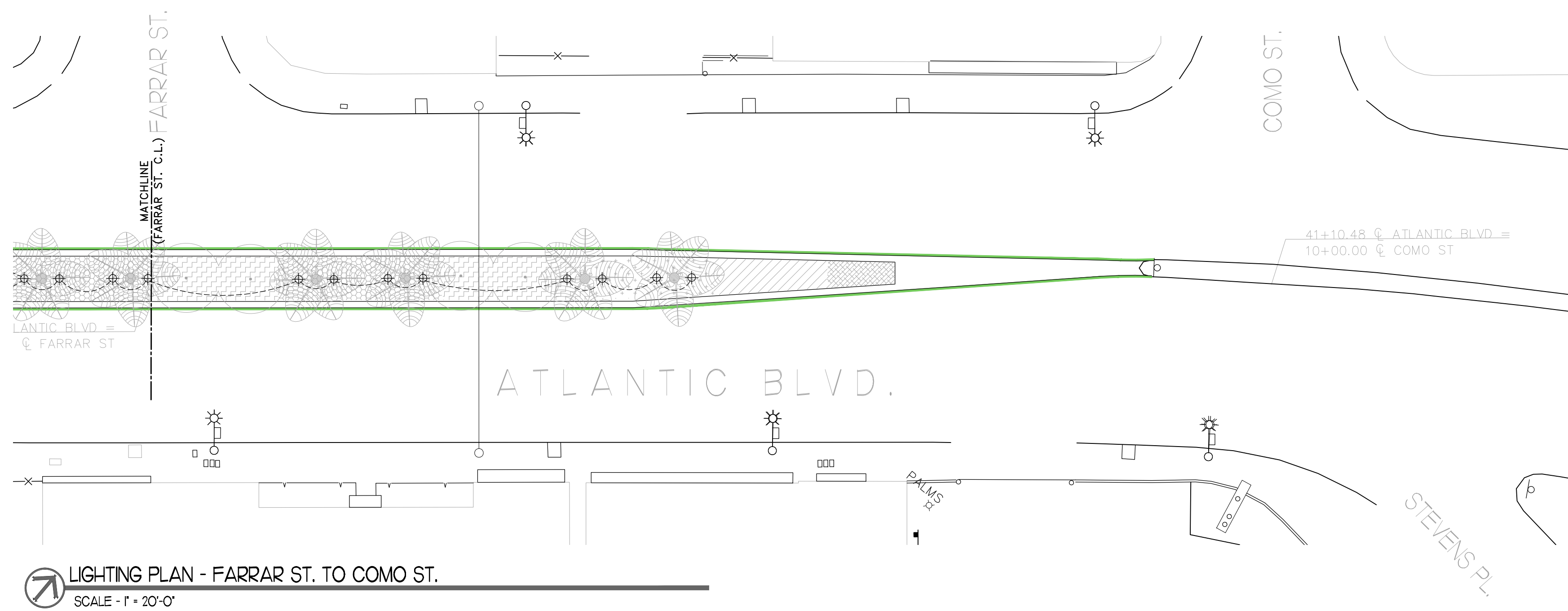
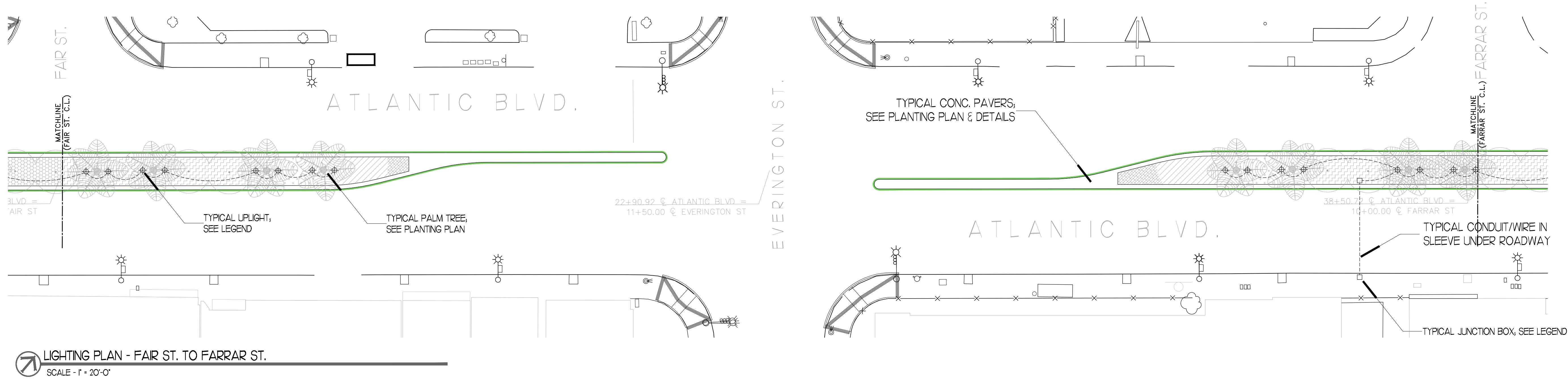
CITY OF COMMERCE  
PUBLIC WORKS AND ENGINEERING DEPARTMENT

ATLANTIC BOULEVARD CORRIDOR IMPROVEMENTS

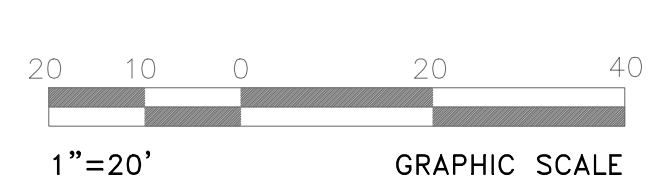
LIGHTING PLAN -  
JARDINE ST. TO FAIR ST. C.L.

SHEET 09 OF 10 SHEETS DRWG NO. L-09





Underground Service Alert  
Call: TOLL FREE  
**811**  
TWO WORKING DAYS BEFORE YOU DIG

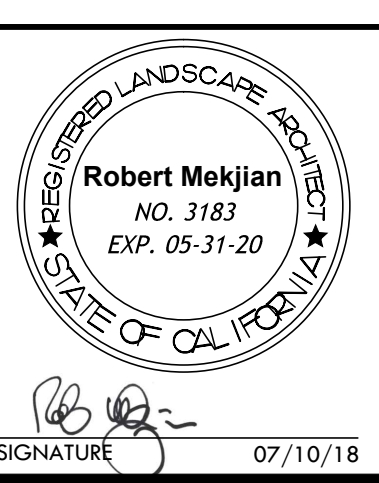


NO.	REVISIONS	REV. BY	APP. BY	DATE

PLAN DATE:  
**07/10/18**

PLOTTING HISTORY:  
07/10/18 - Version 1

PROJECT FILE NO. - NAME:  
1812 - Atlantic Blvd. Medians



**LOST WEST**  
A CALIFORNIA CORPORATION  
LANDSCAPE ARCHITECTURE  
GARDENS • PARKS • CITIES  
PO BOX 4548 Carlsbad, CA 92018  
5208 Townsend Ave. Los Angeles, CA 90041  
TEL: (760) 434-5790 OR (323) 258-8214

ELECTRONICALLY APPROVED BY:  
PUBLIC WORKS & DEV. SERVICES DIRECTOR DATE

ELECTRONICALLY CHECKED BY:  
DATE

TITLE

CITY OF COMMERCE PUBLIC WORKS AND ENGINEERING DEPARTMENT	
ATLANTIC BOULEVARD CORRIDOR IMPROVEMENTS	
LIGHTING PLAN – FAIR ST. C.L. TO END AT COMO ST.	
SHEET 10 OF 10 SHEETS	DRWG NO. L-10