





SAFE CLEAN WATER PROGRAM




Pollution



Fractured
Jurisdiction



Climate
Change



Reliance on
Imported
Water



Limited
Infrastructure

WATER RESILIENCY CHALLENGES



PROGRAM APPROACH

1

Improve Water Quality

2

Increase Local Water Supply

3

Enhance Communities

REGIONAL ISSUE...



...REGIONAL APPROACH

OPPORTUNITY

42 Billion gallons captured annually

1 Million residents' needs

100 Billion gallons lost, enough for

2 Million residents' needs



Safe, Clean Water Program



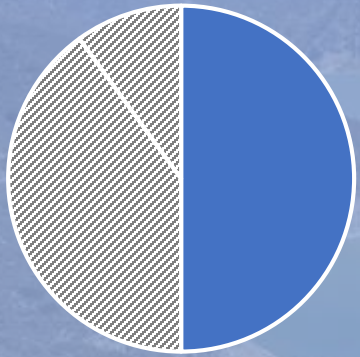
Parcel tax

- 2.5 cents per square foot of impermeable area
- \$300 million annual revenue
- Watershed-based projects
- Local & Regional Projects



Safe, Clean Water Program

Regional Program



50% of total
Program revenue

- Funding returned to each watershed proportional to revenue generated there

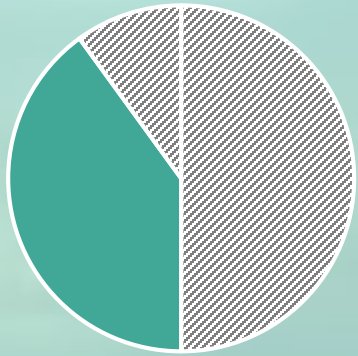
Features

- **Funding for regional infrastructure projects**
- **Multi-benefit projects**
- **Robust stakeholder involvement**
- **Technical assistance**



Safe, Clean Water Program

Municipal Program



40% of total
Program revenue

- Funding returned to each municipality proportional to revenue generated there

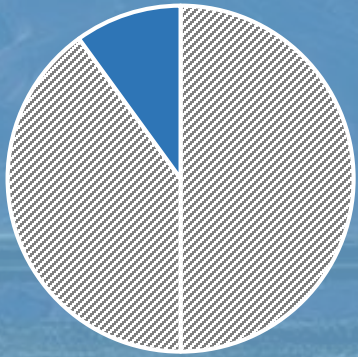
Features

- **Maximum flexibility**
- **Local control of funds**
- **Focus on water quality**
- **Funding for existing activities**



Safe, Clean Water Program

District Program



10% of total
Program revenue

- Funding provides District-wide regional support and programs.

Features

- Education programs
- Regional Studies
- Workforce training
- Technical assistance
- Administration



IMPERMEABLE AREA

LA County Landcover Survey



Identifies



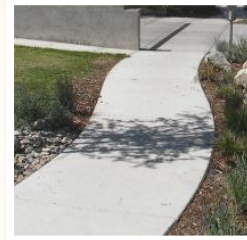
VEGETATION



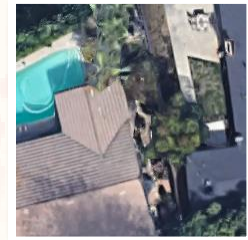
SOIL



STRUCTURES



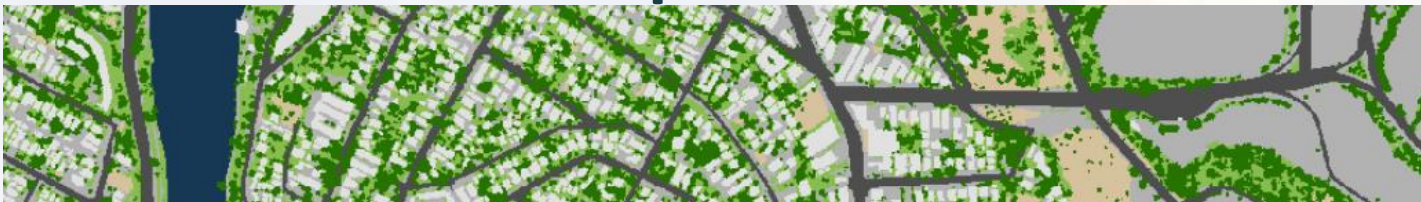
PAVEMENT



OTHER



Calculate Impermeable Area



PROJECTS

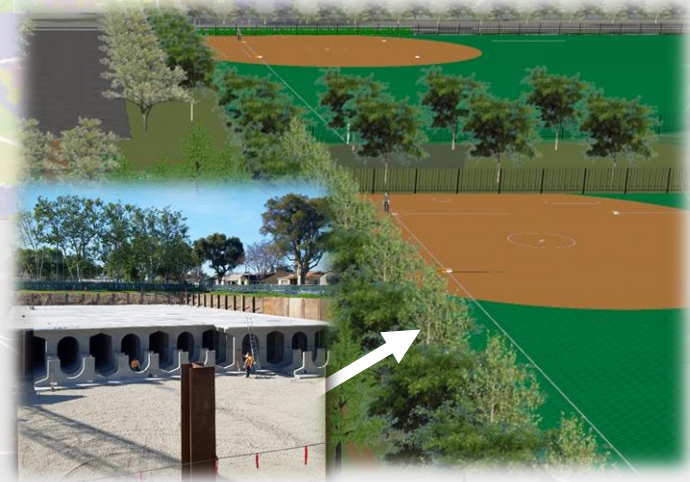


ELMER AVE GREEN STREET



DOMINGUEZ GAP WETLANDS

BASSETT HIGH SCHOOL





CONCLUSION & QUESTIONS

