

APPROX EMPLOYEES (WORKPLACE):	210
APPROX UNITS (MUD):	X
APPROX PARKING COUNT:	320

AERIAL VIEW OF PROPOSED EQUIPMENT PLACEMENT

LEGEND

● PROPOSED SINGLE PORT L2 ● PROPOSED DUAL PORT LEVEL 2 → PATH TO ENTRANCE

WP located at City of Commerce in Los Angeles Metro  
CITY OF COMMERCE TRANSPORTATION DEPARTMENT at 2535 Commerce Way, City of Commerce, CA 90040  
CITY OF COMMERCE







PROPOSED CONDUIT RUN (FEET): X

MAIN ELECTRIC ROOM

AERIAL VIEW OF PROPOSED EQUIPMENT PLACEMENT

LEGEND

- |                           |                              |   |   |
|---------------------------|------------------------------|---|---|
| ● PROPOSED SINGLE PORT L2 | ● PROPOSED DUAL PORT LEVEL 2 |  PROPOSED CONDUIT |  ELECTRIC ROOM |
| ● ACTUAL SINGLE PORT L2   | ● ACTUAL DUAL PORT LEVEL 2   |  ACTUAL CONDUIT   |  ACTUAL POWER  |

WP located at City of Commerce in Los Angeles Metro  
CITY OF COMMERCE TRANSPORTATION DEPARTMENT at 2535 Commerce Way, City of Commerce, CA 90040  
CITY OF COMMERCE

**1. Proposed product:**

*List equipment to be installed, indicating types of chargers and number of total ports. Note any program extension considerations.*

**2. Electrical Capacity Review:**

*Discuss capacity, whether existing capacity is sufficient, or if additional capacity is needed that would increase scope and costs.*

**3. Conduit routing:**

*Estimate length of conduit from power to equipment, and identify cost considerations, such as trenching, concrete/asphalt restoration, landscaping, etc.*

**4. Safety / Code Compliance:**

*Certify here work will comply with prevailing codes and regulations, and identify safety and code issues that require special consideration.*

**5. EVSE equipment protection/stripping/signage:**

*Note any equipment protection, striping, and signage required for installation that exceeds EA design guidelines and increases costs.*

**6. EVSE installation:**

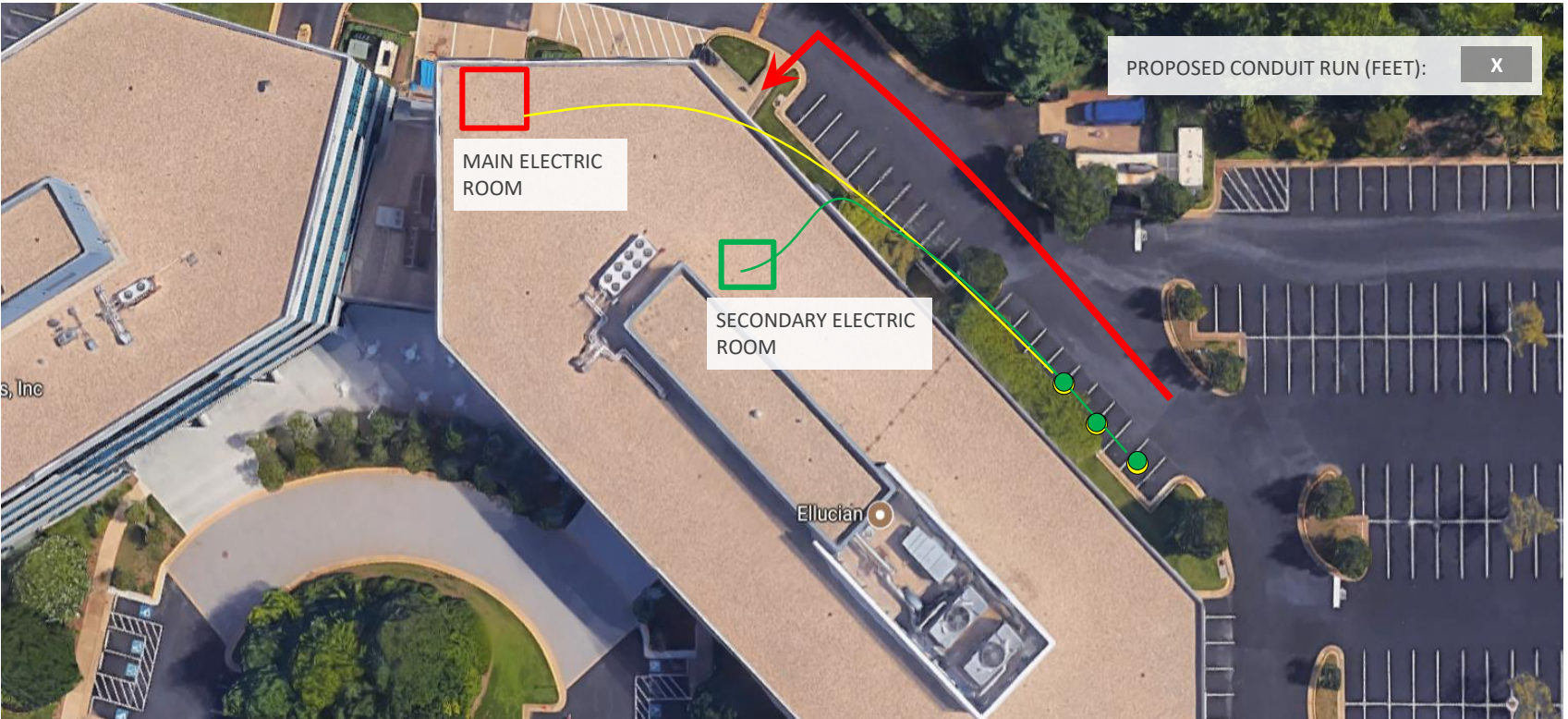
*Confirmation statement that required design and installation are consistent with Electrify America design guidelines*

WP located at City of Commerce in Los Angeles Metro

CITY OF COMMERCE TRANSPORTATION DEPARTMENT at 2535 Commerce Way, City of Commerce, CA 90040

CITY OF COMMERCE





ARIAL VIEW OF PROPOSED EQUIPMENT PLACEMENT *(REPLACE WITH PHOTO OF PARKING FIELD FOR COVERED GARAGES)*

LEGEND

● PROPOSED SINGLE PORT L2	● PROPOSED DUAL PORT LEVEL 2	— PROPOSED CONDUIT	□ ELECTRIC ROOM
● ACTUAL SINGLE PORT L2	● ACTUAL DUAL PORT LEVEL 2	— ACTUAL CONDUIT	□ ACTUAL POWER

WP located at City of Commerce in Los Angeles Metro  
CITY OF COMMERCE TRANSPORTATION DEPARTMENT at 2535 Commerce Way, City of Commerce, CA 90040  
CITY OF COMMERCE



PHOTO OF INSTALLED EQUIPMENT ANGLE #1

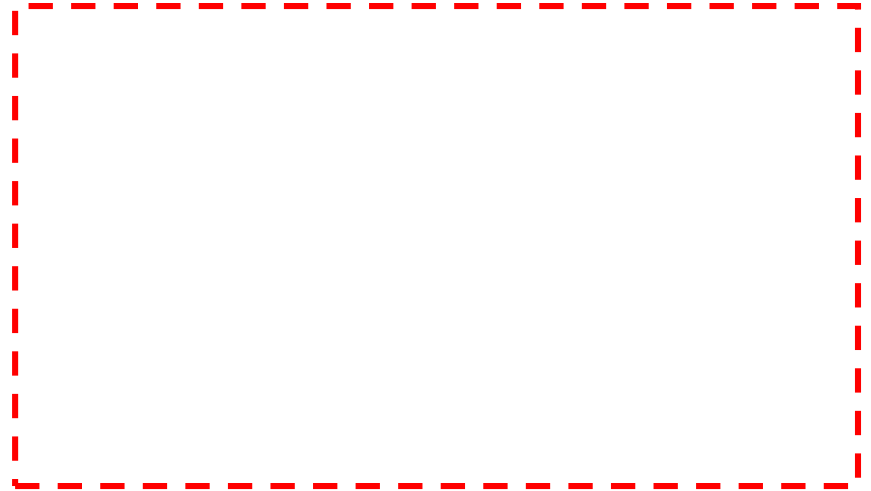


PHOTO OF INSTALLED EQUIPMENT ANGLE #2



CLOSE-UP OF INSTALLED EQUIPMENT



CLOSE-UP OF INSTALLED EQUIPMENT

WP located at City of Commerce in Los Angeles Metro

CITY OF COMMERCE TRANSPORTATION DEPARTMENT at 2535 Commerce Way, City of Commerce, CA 90040

CITY OF COMMERCE