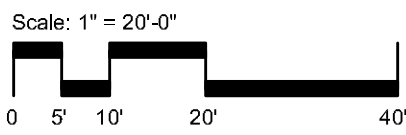


DEMOLITION NOTE:
CONTRACTOR TO REMOVE AND DISPOSE OF ANY A.C., CONCRETE PAVING AND ROAD BASE MATERIALS LOCATED IN THE EXISTING MEDIAN ISLAND. REMOVE AND DISPOSE OF ANY SOIL WITHIN THE TOP 26 INCHES MEASURED FROM THE TOP OF CURB. FILL THE MEDIAN PLANTER WITH CLASS 'A' TOPSOIL TO WITHIN 2 INCHES OF THE TOP OF CURB. SEE DETAIL A, THIS SHEET.

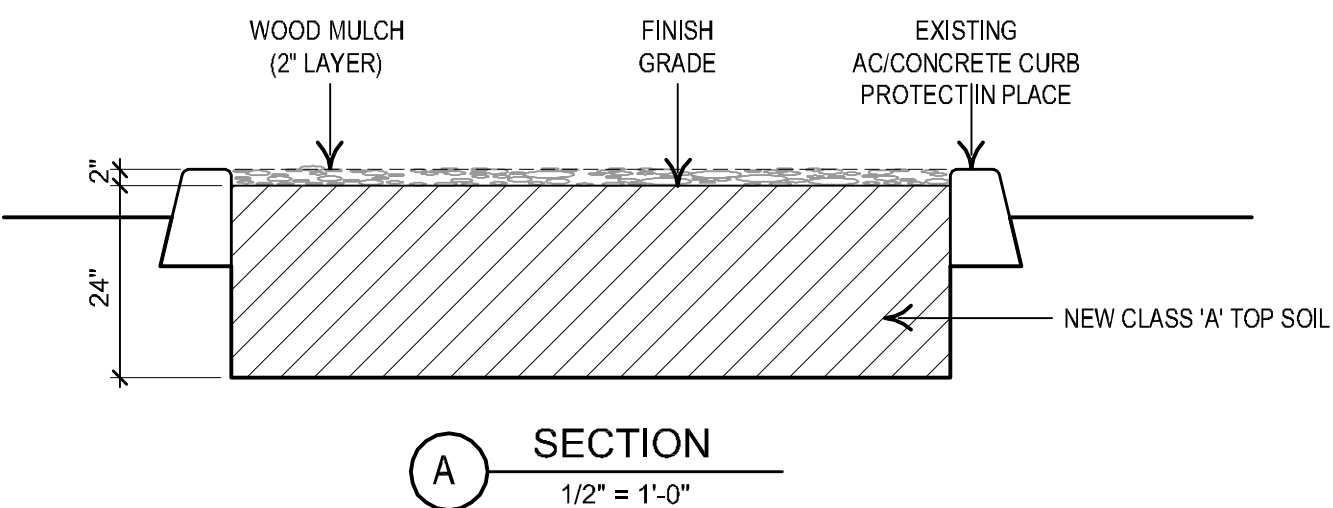
PLANTING PLAN



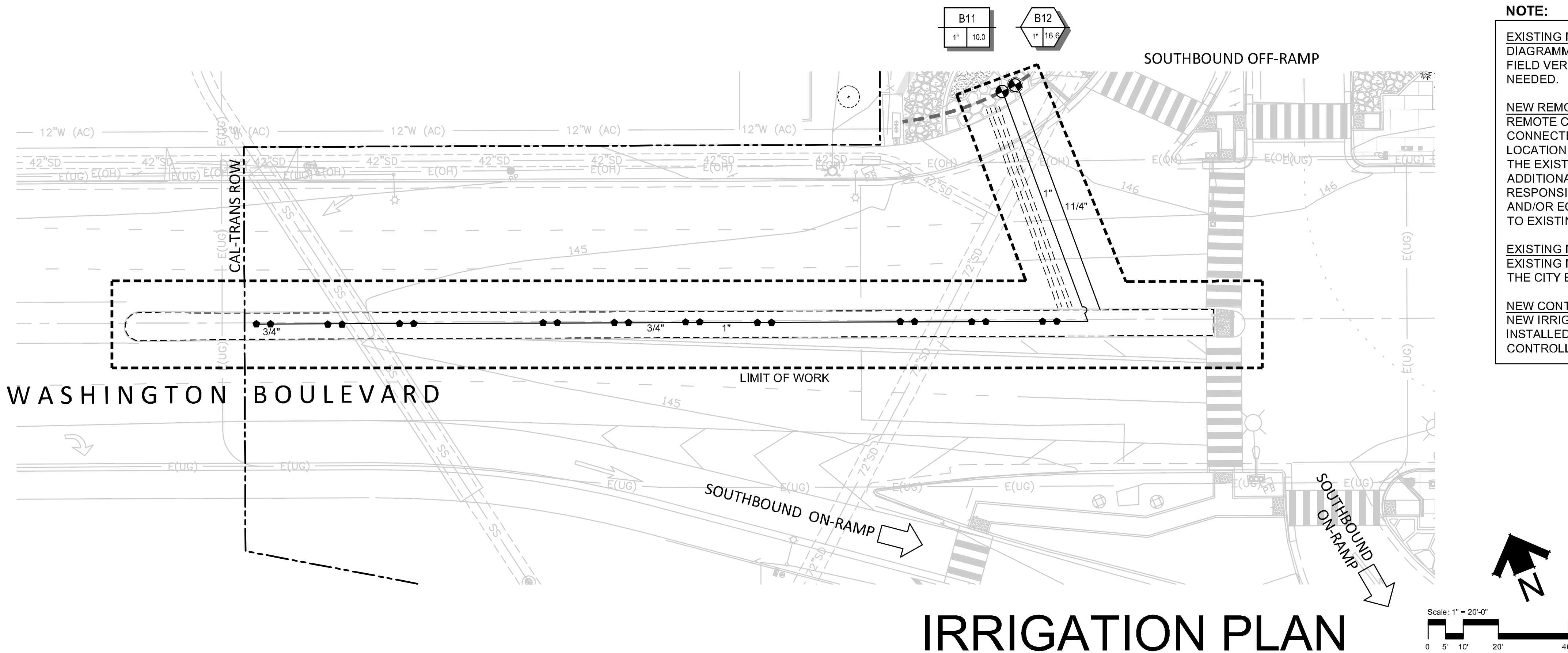
PLANT LEGEND

TREES				
SYMBOL	BOTANICAL COMMON NAME	QUANTITY - SIZE	COMMENTS	WATER USE
	Lagerstroemia 'Muskogee' Crape Myrtle	10 - 36" box	STANDARD TRUNK 8" ABOVE GRADE - NATURAL BRANCHING AT 6" AND ABOVE	MED 4

SHRUBS				
SYMBOL	BOTANICAL COMMON NAME	QUANTITY - SIZE	COMMENTS	WATER USE
	Bougainvillea 'Monelli' Purple Queen Bougainvillea	24 - 5 gal.	MUST BE AT LEAST CAN FULL TO BE ACCEPTED	LOW 3
	Lantana camara 'New Gold' Gold Spreading Lantana	44 - 5 gal.	MUST BE AT LEAST CAN FULL TO BE ACCEPTED	VERY LOW
	Olea europaea 'Montra' P.P. #6266 Little Olive Dwarf Olive	22 - 5 gal.	MUST BE AT LEAST CAN FULL TO BE ACCEPTED	LOW 2



REFER TO SHEET LP. 3 FOR PLANTING NOTES AND DETAILS
REFER TO TITLE SHEET FOR GENERAL NOTES



NOTE:
EXISTING MAINLINE: THE EXISTING MAINLINE IS SHOWN TO BE DIAGRAMMATIC. THE CONTRACTOR SHALL BE RESPONSIBLE TO FIELD VERIFY THE MAINLINE'S ACTUAL LOCATION. MODIFY AS NEEDED.
NEW REMOTE CONTROL VALVES AND GATE VALVES: THE NEW REMOTE CONTROL VALVES AND GATE VALVES SHALL BE CONNECTED TO THE EXISTING MAINLINE AT THE APPROXIMATE LOCATION SHOWN ON PLANS. THE CONNECTIONS BETWEEN THE EXISTING MAINLINE AND NEW VALVES WILL REQUIRE ADDITIONAL PIPES AND FITTINGS. THE CONTRACTOR SHALL BE RESPONSIBLE TO PROVIDE ANY NECESSARY MATERIALS AND/OR EQUIPMENT TO SUCCESSFULLY CONNECT NEW VALVES TO EXISTING MAINLINE.
EXISTING MAINLINE MODIFICATIONS: MODIFICATIONS TO THE EXISTING MAINLINE SHALL BE MADE TO THE SATISFACTION OF THE CITY ENGINEER AND LOCAL WATER PURVEYOR.
NEW CONTROL WIRES: TO ENSURE PROPER FUNCTION OF THE NEW IRRIGATION SYSTEM, NEW CONTROL WIRES SHALL BE INSTALLED. LINKING NEW VALVES TO DESIGNATED CONTROLLER.

IRRIGATION SYMBOLS LEGEND	
TREE BUBBLER	
	DESCRIPTION
	ROOT WATERING SYSTEM
IN-LINE DRIP	
	DESCRIPTION
	DRIP LINE TUBING AREA
MISC. MATERIAL	
	REMOTE CONTROL VALVE
	REMOTE CONTROL ZONE KIT
PIPING	
	MANUFACTURER/ DESCRIPTION
	EXISTING IRRIGATION MAINLINE
	IRRIGATION LATERAL LINE
	SLEEVE

REFER TO SHEET LI.1 FOR IRRIGATION LEGEND
WITH MANUFACTURER AND PRODUCT INFORMATION

REMOTE CONTROL DRIP ZONE KIT	
VALVE SIZE	CONTROLLER STATION GALLONS PER MINUTE
REMOTE CONTROL VALVE	
VALVE SIZE	CONTROLLER STATION GALLONS PER MINUTE

REFER TO SHEETS LI.3 & LI.4, FOR IRRIGATION DETAILS, NOTES, AND CALCULATIONS
REFER TO TITLE SHEET FOR GENERAL NOTES

Costa Mesa Office:
151 Kalimus Drive, Suite M8
Costa Mesa, CA 92626
Phone: (714) 641-1300
Fax: (714) 641-1323
e-mail: drawings@dvolzdesign.com
www.dvolzdesign.com

Subconsultant:

Seal:



Revisions:			
No.	Date	Revisions	By

Project:
**WASHINGTON BLVD.
REHABILITATED
LANDSCAPE PROJECT**
Owner:
City of Commerce

Project No.:
Drawn By: PC
Checked By: GV
Date: MAY 1, 2017
Scale: AS SHOWN

Drawing Title:
**ADDENDUM #1
PLAN**

Drawing No.: