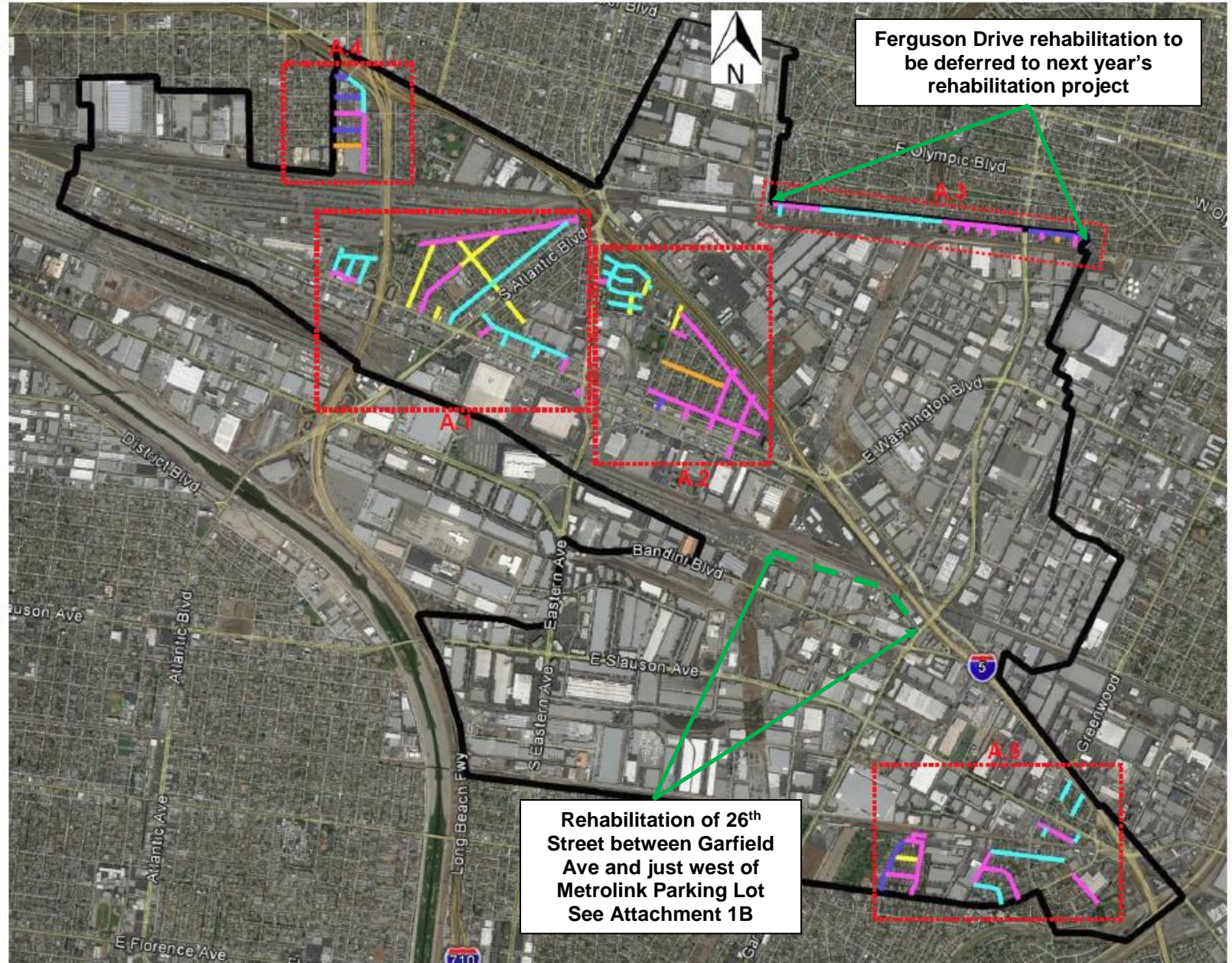
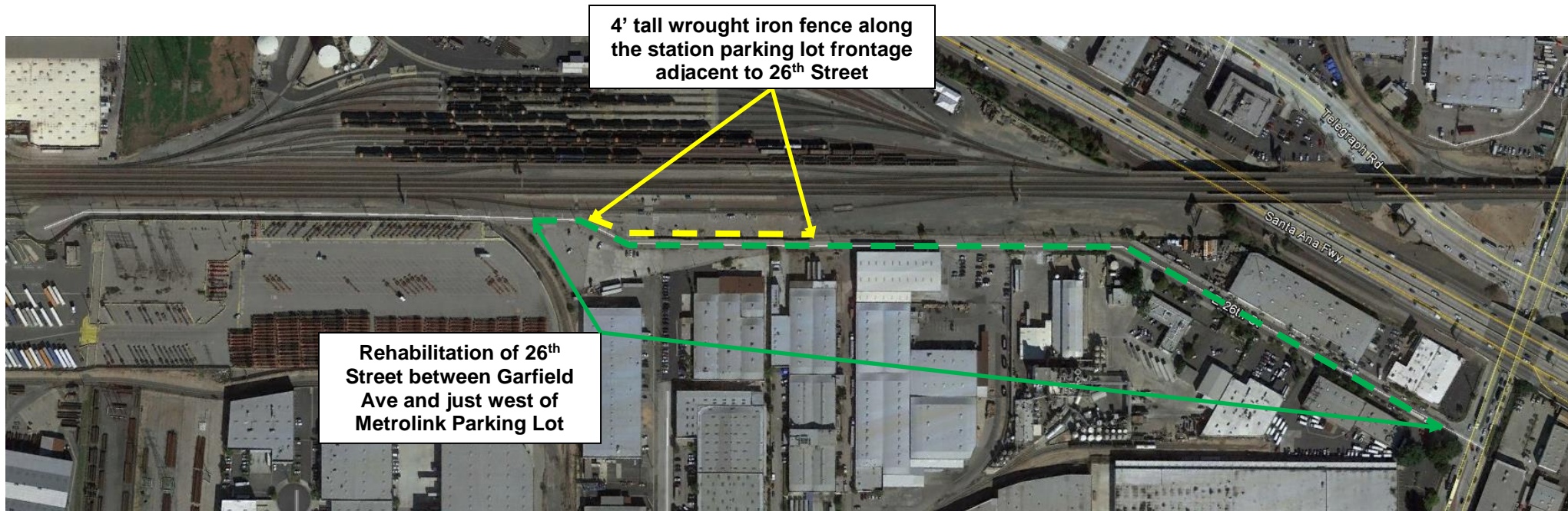


# Attachment 1.A. Deferral of Ferguson Drive rehabilitation to next year's rehabilitation project

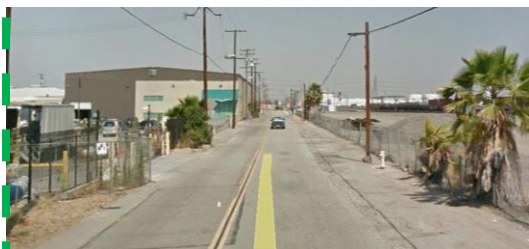
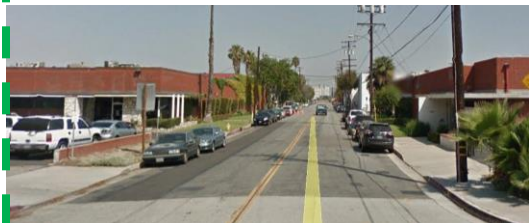




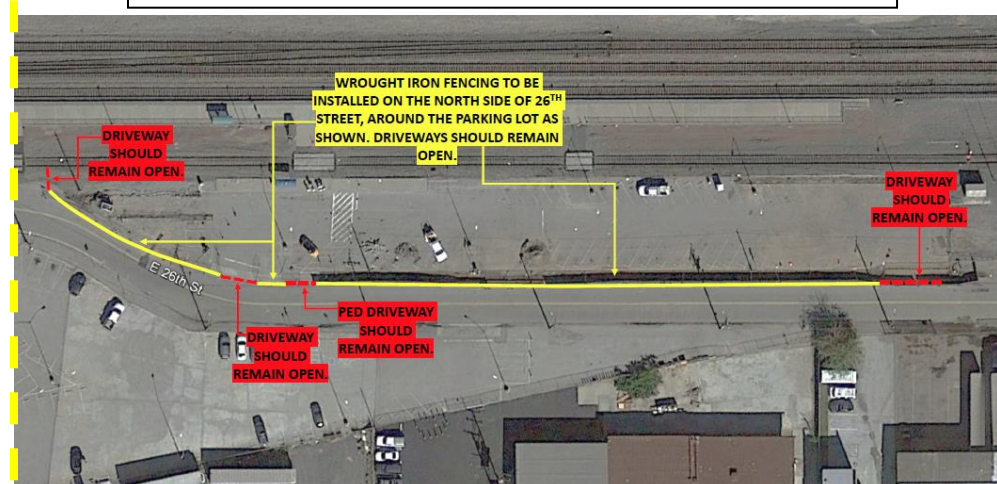
# Attachment 1.B. Rehabilitation of 26<sup>th</sup> Street between Garfield Ave and just west of Metrolink Parking Lot



Pavement Conditions on 26<sup>th</sup> Street



4' tall wrought iron fence along the station parking lot frontage adjacent to 26<sup>th</sup> Street





Attachment 2. Adding 3 minor cul-de-sacs of cul-de-sac (dead-end) areas on Senta Ave, Gaspar Ave, and Elkgrove Ave north of Bartmus Street

