

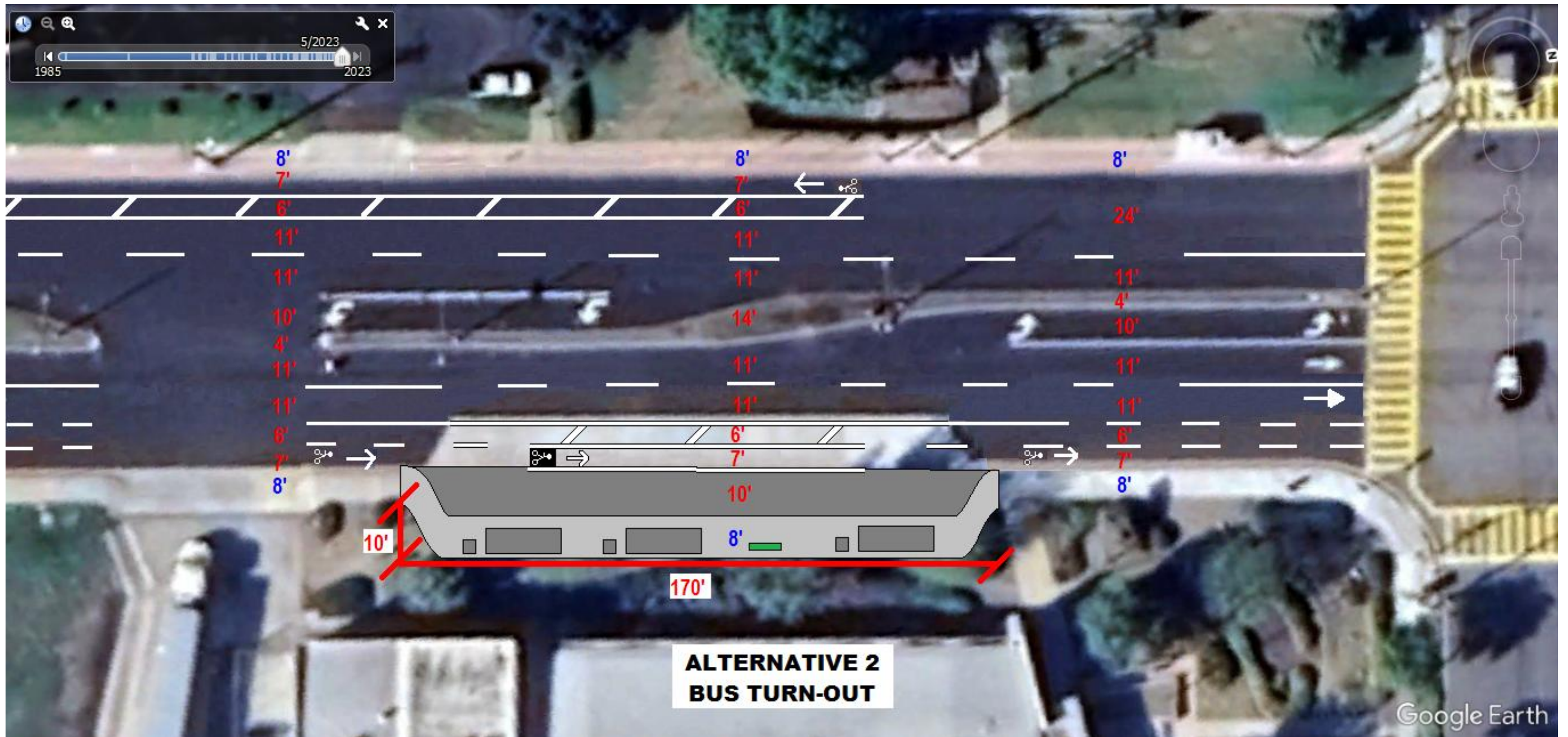
Two lanes restored in both directions

Bus hub remains in present location

Bike lane would run along curb and turn on to private property behind the bus hub with an easement and exit at corner at Harbor Street

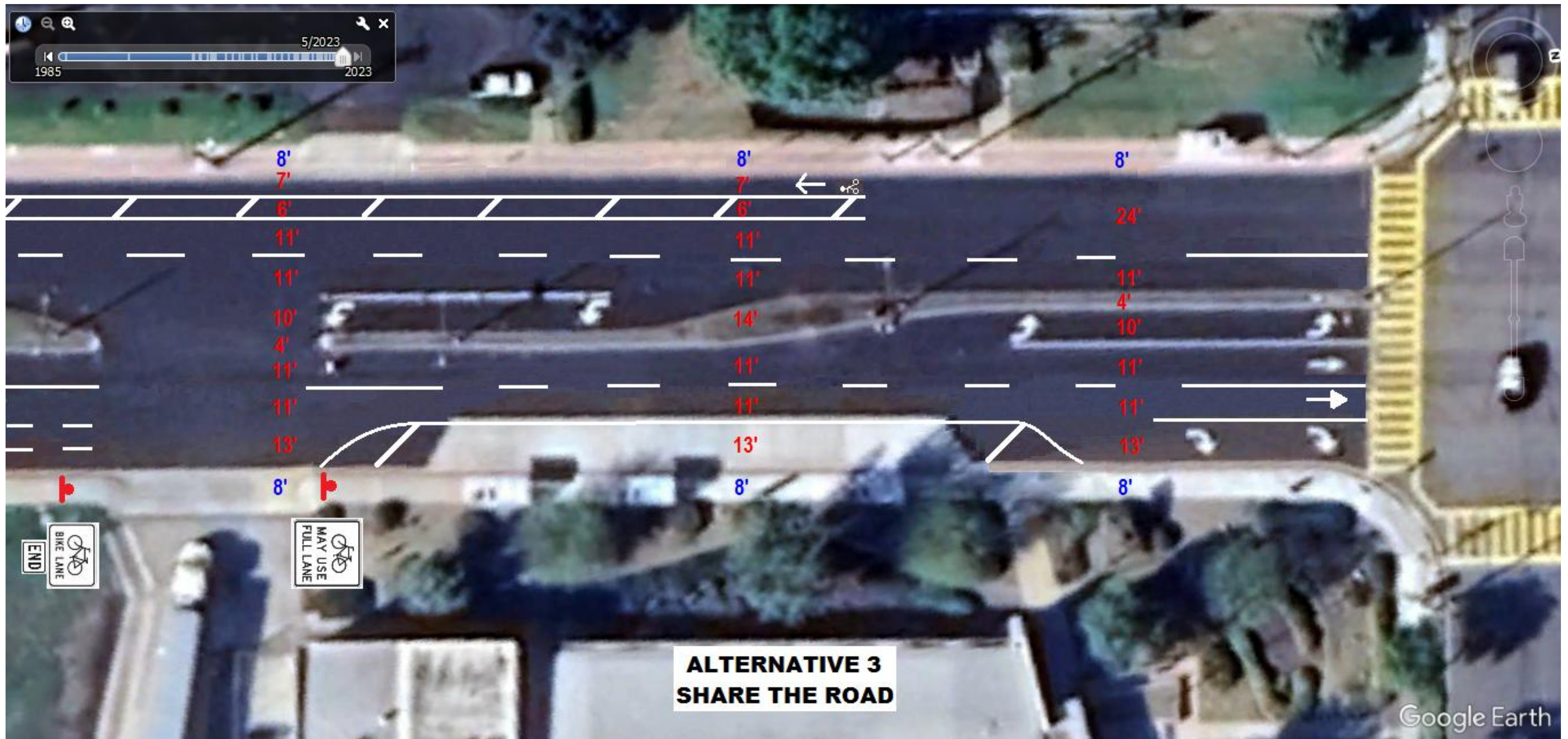
Cost estimate = \$418,000 not including cost of easement





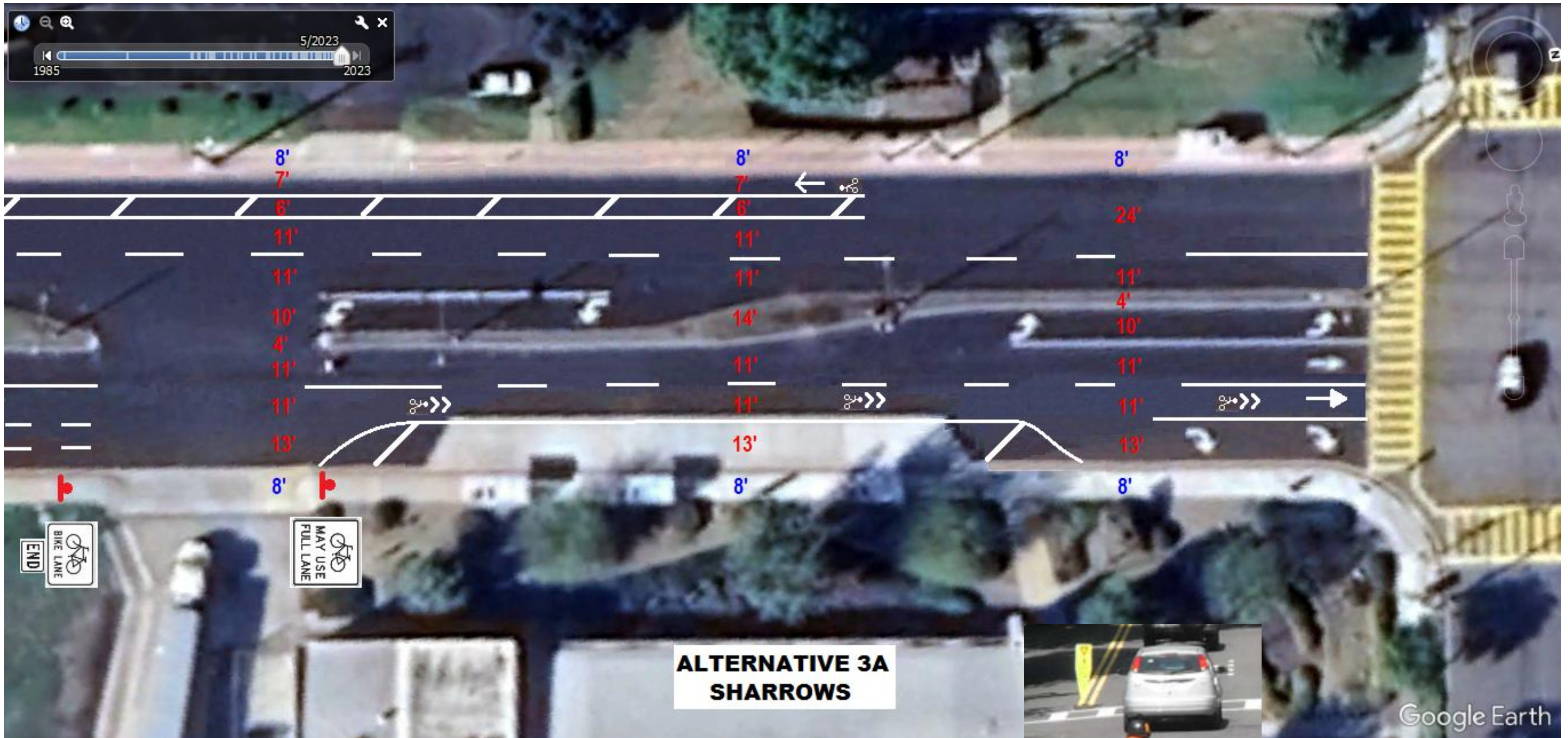
Two lanes restored in both directions  
 Entire bus hub would be relocated on to private property with an easement  
 Bike lanes would run along curb  
 Cost estimate = \$610,000 not including cost of easement





Two lanes restored in both directions  
Bus hub remains in present location  
Bike lanes would run along curb and share lane with bus hub with posted signage  
Cost estimate = \$291,000

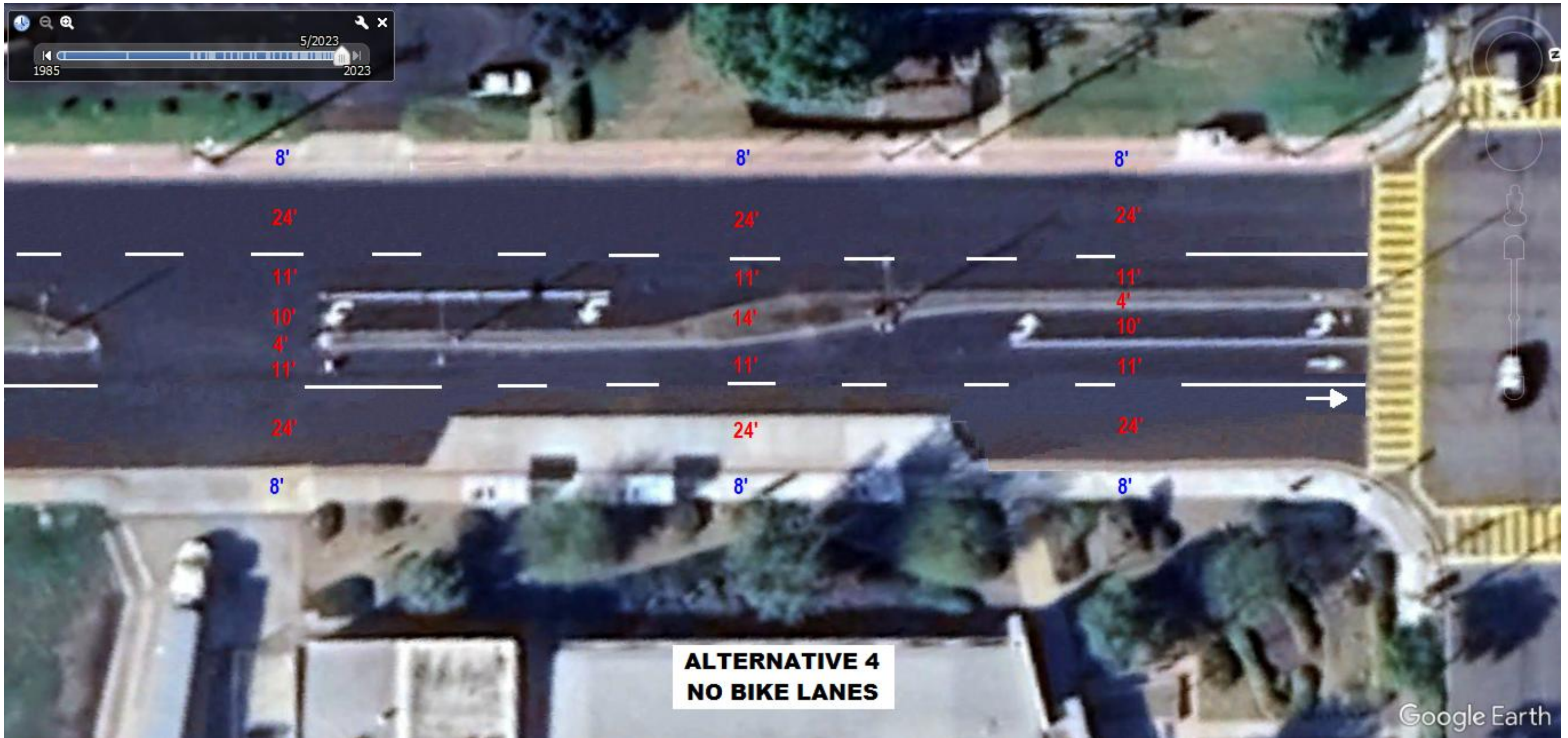




Two lanes restored in both directions  
 Bus hub remains in present location  
 Bike lanes would share lane with vehicles in lanes marked with sharrows  
 Cost estimate = \$293,000







Two lanes restored in both directions  
Bus hub remains in present location  
Cost estimate = \$247,000