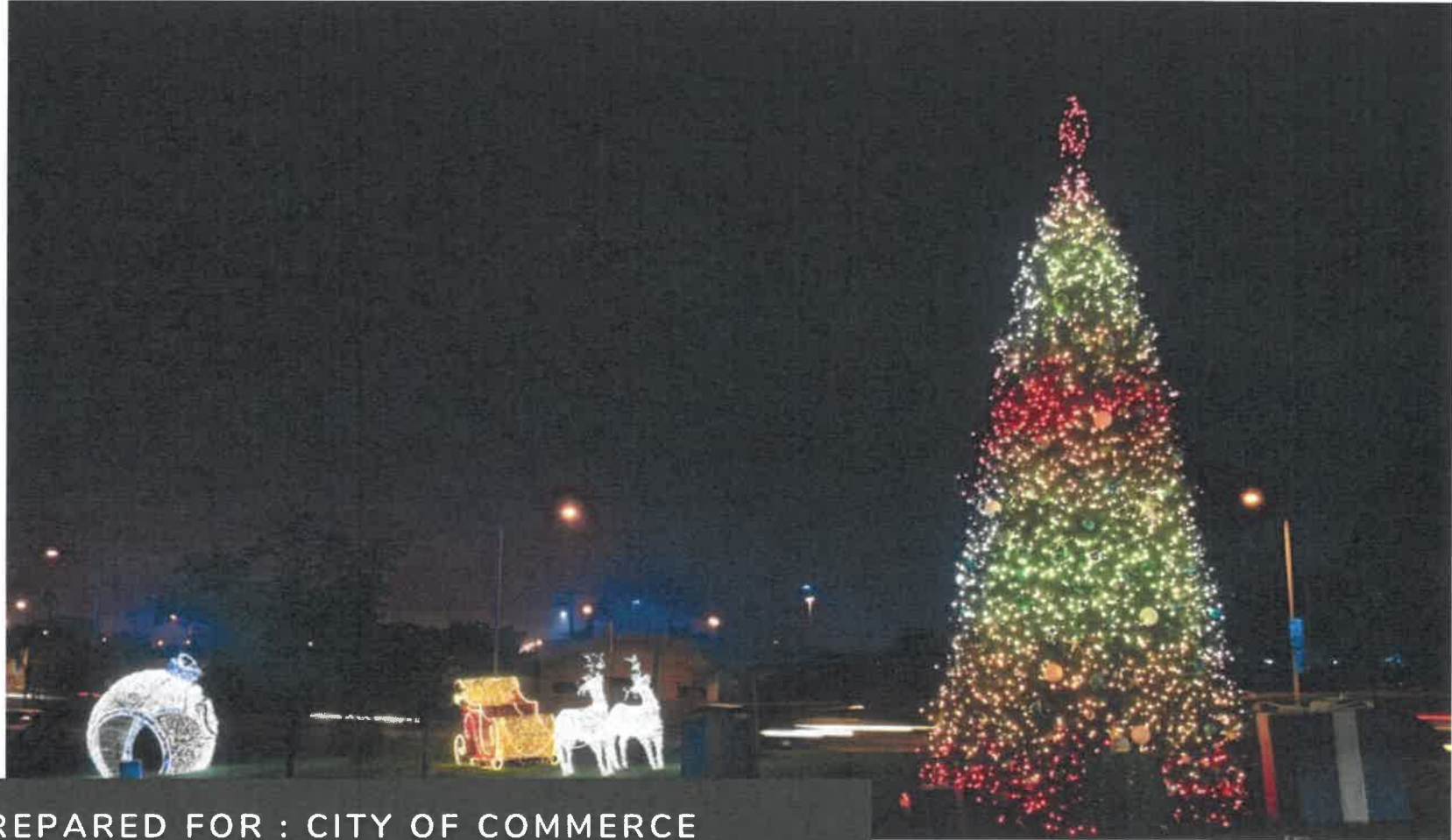


RFP: Installation, Removal, Maintenance and Storage of Holiday Decorations



PREPARED FOR : CITY OF COMMERCE
2535 Commerce Way
Commerce, CA 90040

3/4/2024

PROPOSAL PRESENTED BY:
DANIEL CHRISTENSON - DIRECTOR OF SALES

PROPOSAL DESIGNED BY:
STEPHANIE ESCOBAR - CREATIVE DIRECTOR

All rendering artwork, photos, and
design concepts are property of:

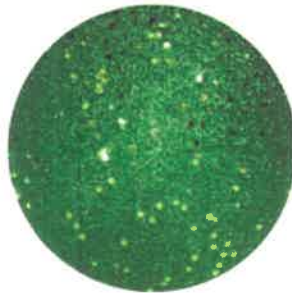




CITY OF COMMERCE
**2024 HOLIDAY
DECOR**

THEME #2 - COMMERCE CHRISTMAS

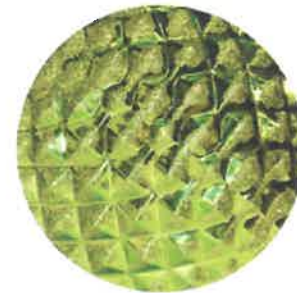
ORNAMENT PACKAGE



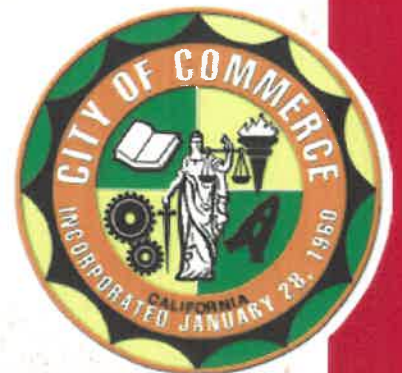
GREEN



GOLD



OLIVE



AREA 1 – HERITAGE PARK

Proposed Scope:

- 24FT Sequoia Frame Tree Decorated with a mix of Green Matte, Green Shiny and Gold Ornaments. 4FT Animated Snowfall Tree Topper and 2FT Outdoor Rated Gift Boxes.
- 14FT Lighted Skyline – Themed to Match "Commerce Christmas" color scheme.
- Photo Op #1 – 12FT Walkthrough Gift Box with Cool White, Blue & Green LED Lights.
- Photo Op#2 – 12FT Blue LED Walkthrough Ornament Arch

COMMERCE CHRISTMAS



HERITAGE PARK SKYLINE



AREA 2 - VETERAN'S LIBRARY DISPLAY



Proposed Scope:

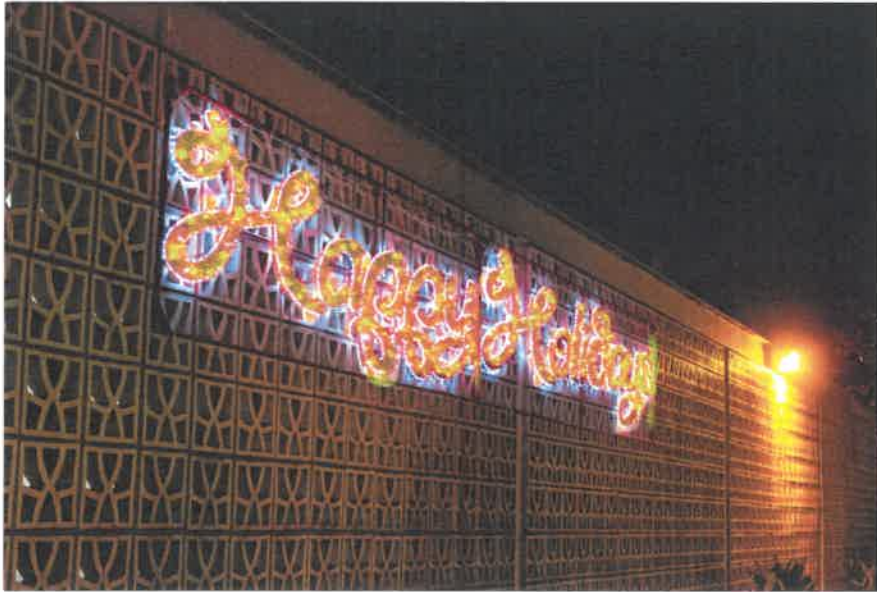
- Gold Tree Motifs (Qty. 10)
- Blue, Warm White & Green Alternating C9 Eave Lighting (Approximately 220FT)

AREA 3 - CITY HALL DISPLAY

Proposed Scope:

- 20FT Artificial Frame Tree Decorated with a mix of Green Matte, Green Shiny and Gold Ornaments.. Topped with a 4FT Animated Snowfall Tree Topper. Outdoor Rated Gift Boxes at the base of the tree.
- 8FT Lighted Gold Sleigh with Warm White White LED Lights. Structured bench for a sit-in photo op.
- Snowflake Gobo Projections on the City Hall Facade
- 14FT Gold "Happy Holidays" Skyline on the City Hall Facade
- 9FT Decorated Tree for City Hall Lobby (Comp)
- Additional: City Hall Tree wrapped with warm white LED Mini Lights (Approximately 30 Strands)
- Optional: 60FT Live Tree with Lights and Commercial Grade decorations

COMMERCE CHRISTMAS



COMMERCE CHRISTMAS



COMMERCE CHRISTMAS



AREA 4 - STREET DISPLAY

Proposed Scope:

Location: Eastern Avenue (c/s Jillson St. & Atlantic Blvd.)

- 34 - center pole mounts with dual-sided displays (total of 34 displays on 17 poles)
- 17 - vinyl pole wraps
- Location: Commerce Way (c/s Jillson & Harbor)
- 11 - pole mounts
- 11 - single sided pole displays
- 11 - vinyl pole wrap
-

Location: Atlantic Blvd. (c/s 5 Freeway & Jillson)

- 29 - pole mounts
- 29 - single sided pole displays
- 29 - vinyl pole wrap

Location: Washington Blvd. (c/s 5 Freeway & Atlantic Blvd.)

- 51 - pole mounts
- 51 - single sided pole displays
- 51 - vinyl pole wrap

Location: Telegraph Rd. (c/s Washington Blvd. & Hoefner Ave.)

- 40 - pole mounts
- 40 - single sided pole displays
- 40 - vinyl pole wrap

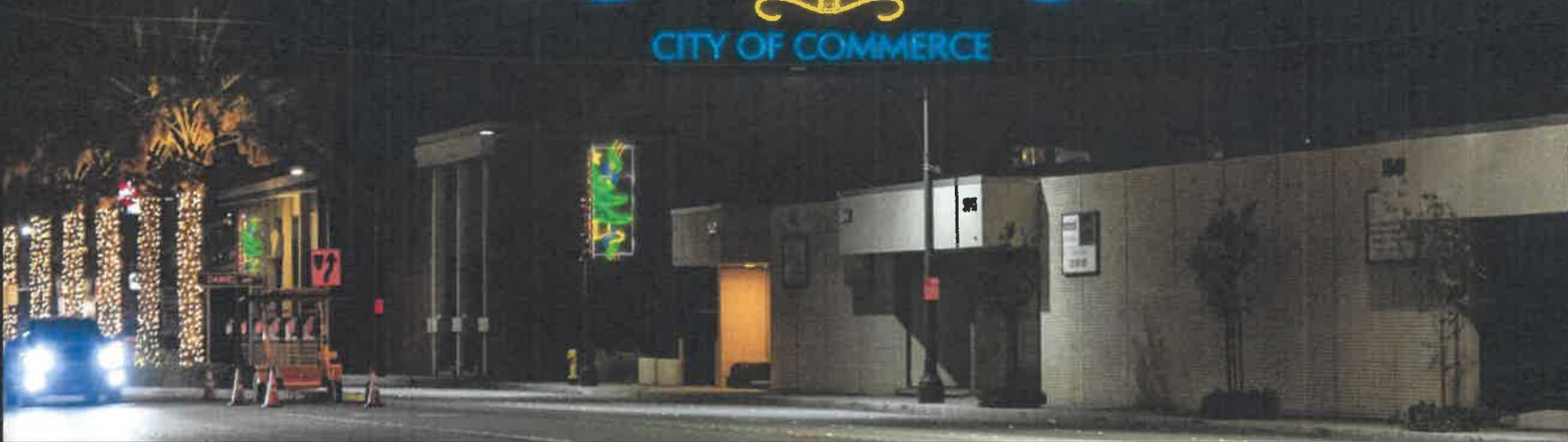
39 Palm tree string lights Washington Blvd

- 15 FT palm tree string lights - median center islands along Washington Blvd, between I-710 and I-5 freeways

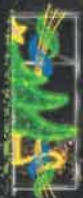
8 LED-lighted overhead streamers (lighted skylines) located at the following designated intersections:

- Washington Blvd. at Ayers Ave.
- Washington Blvd. and Atlantic Blvd.
- Washington Blvd. and Telegraph Rd.
- Atlantic Blvd. and Harbor St.
- Eastern Ave. and Everington St.
- Commerce Way and Washington Blvd.
- Gage Ave. and Zindell Ave.
- Triggs St. and S. McDonnell Ave.

SKYLINES



POLE MOUNTS



AREA 5 – BRISTOW PARK

Proposed Scope:

- 10FT Lighted Bow on the Park Building Roof
- Bristow Park Entrance/Fence - Themed 2D LED decor with twinkle lights to match street poles and overhead skylines.



AREA 5 - BRISTOW PARK

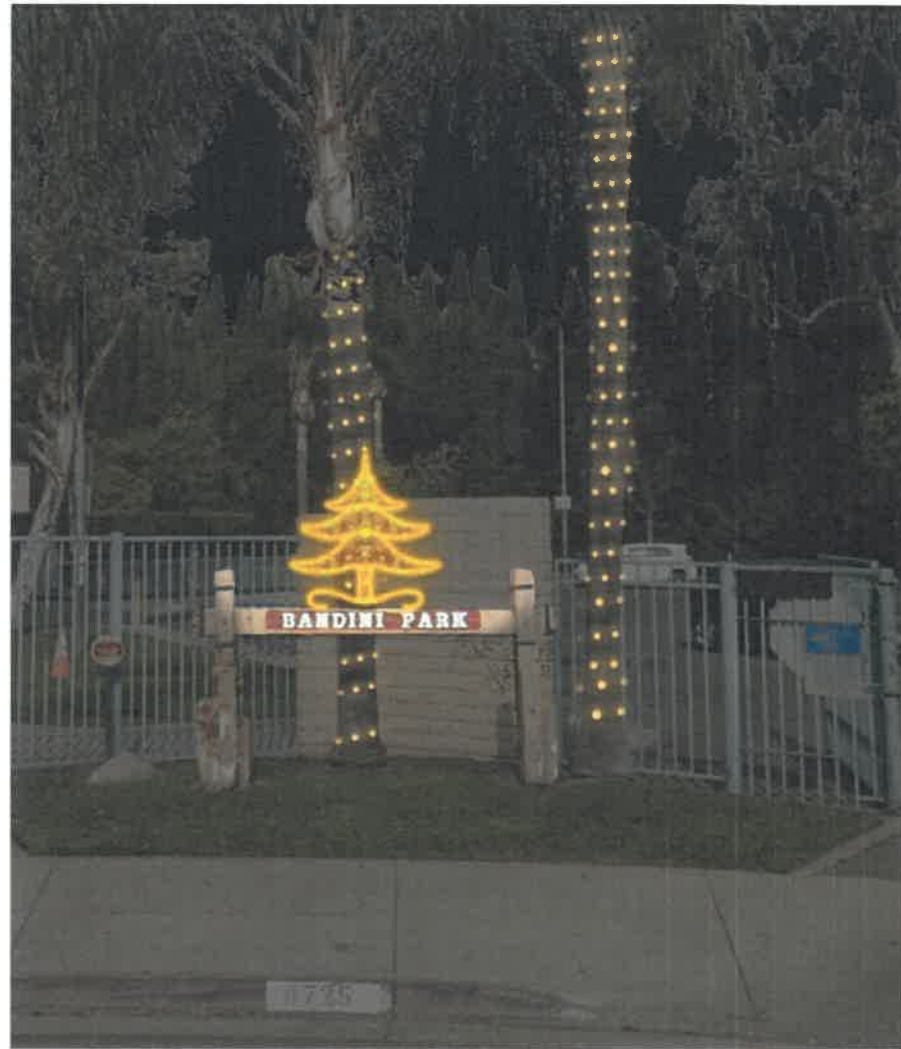


4FT LED Lighted 2D Gold Tree Motifs

AREA 6 – BANDINI PARK

Proposed Scope:

- Themed 2D LED decor with twinkle lights to match street poles and overhead skylines.
- Palm Trees wrapped with approximately 10 strands of 50ct LED Mini Lights



AREA 7 - VETERAN'S PARK



Proposed Scope:

- 8FT 2D Lighted Gold Tree on Veterans Memorial Park Entrance Sign
- Green and Blue LED Mini Lights on Pigmy Palms and Bushes.